



Winchester Avenue

London, NW6

£2,250 per month
(£519.23 per week)

Lovely two bedroom apartment situated on the ground floor of this period conversion. Comprising of bright reception room, high ceilings, two double bedrooms, modern bathroom and separate kitchen. EPC D.



Winchester Avenue

London, NW6

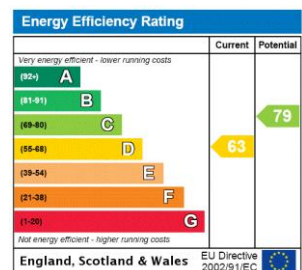
- Two bedroom
- Newly refurbished bathroom
- Unfurnished
- Ground floor
- 748 SQFT
- EPC D



Lovely two bedroom apartment situated on the ground floor of this period conversion. Comprising of bright reception room, high ceilings, two double bedrooms, modern bathroom and separate kitchen.

Conveniently located within close proximity to Brondesbury Park Overground Station and local amenities, shops and restaurants.

Minimum Term: 12 months
Deposit Required: 5 weeks
Local Authority: London Borough of Brent
Council Tax Band: D
EPC Rating: D
Unfurnished



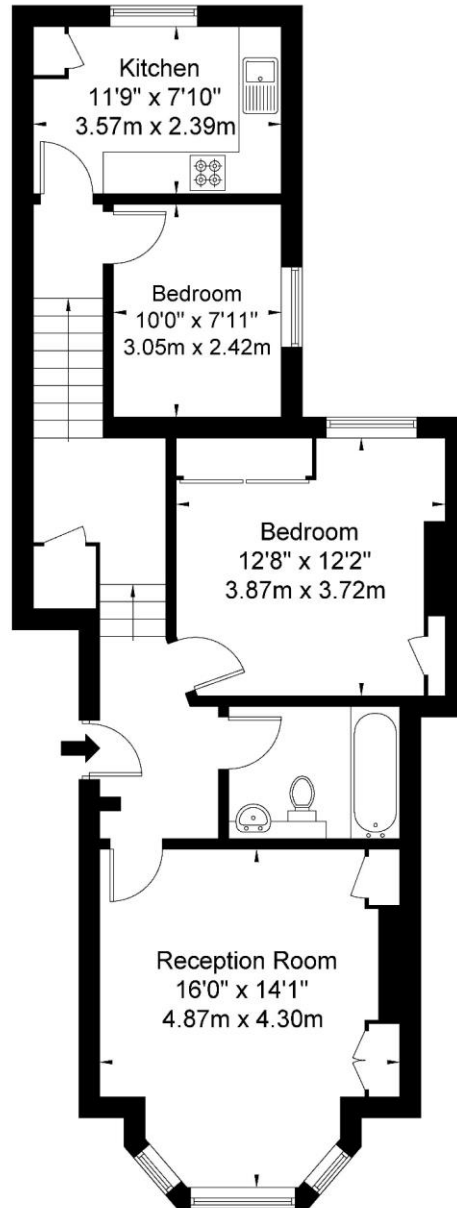
Chestertons Little Venice Lettings

26 Clifton Road
 Maida Vale
 London
 W9 1SX
 littlevenice@chestertons.co.uk
 02072662369
 chestertons.co.uk

Additional tenant charges apply (fees apply to non-AST tenancies only)
 Tenancy Agreement Fee: £300
 References per Tenant/Guarantor: £60
 Inventory check (approx. £100 – £250 inc. VAT)
chestertons.co.uk/property-to-rent/applicable-fees

Winchester Avenue NW6 7TU

Approx Gross Internal Area = 69.5 sq m / 748 sq ft



Ground Floor

Ref

Copyright **BLEU
PLAN**

The Floor plan is not to scale and measurements and areas shown are approximate and therefore should be used for illustrative purposes only. The plan has been prepared in accordance with the RICS code of Measuring Practice and whilst we have confidence in the information produced it must not be relied on. If there is any aspect of particular importance, you should carry out or commission your own inspection of the property.

Copyright @ BLEUPLAN

Chesterton Global Ltd trading as Chestertons for themselves and for the vendor of this property whose agents they are, give notice that (i) these particulars do not constitute any part of an offer or contract, (ii) all statements contained within these particulars are made without responsibility on the part of Chestertons or the vendor, (iii) whilst made in good faith, none of the statements contained within these particulars are to be relied upon as a statement or representation of fact, (iv) any intending purchasers must satisfy themselves by inspection or otherwise as to the correctness of each of the statements contained within these particulars, (v) the vendor does not make or give either Chestertons or any person in their employment any authority to make or give representation or warranty whatsoever in relation to this property. Wide angle lenses may be used. ©Copyright Chestertons | Chesterton Global Ltd |

Registered Office 40 Connaught Street, Hyde Park, London W2 2AB Registered Company Number 05334580.



This paper is
100% recyclable