



St Marys Mansions

St Marys Terrace, W2

£6,450 per month
(£1,488.46 per week)

A bright & spacious flat of circa 1900 sq ft in this prestigious mansion block, only moments to Paddington Mainline station. Offering excellent entertaining space & four spacious bedrooms as well being newly decorated throughout. EPC rating D.

CHESTERTONS



St Marys Mansions

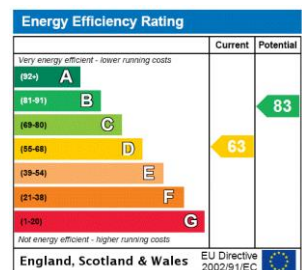
St Marys Terrace, W2

- Fantastic Mansion Block Of Circa 1900 SQ FT
- Four Double Bedrooms & Two Modern Bathrooms
- Double Reception & Large Integrated Kitchen
- Close To Paddington Mainline Station
- EPC Rating D



A bright & spacious flat of circa 1900 sq ft in this prestigious mansion block, only moments to Paddington Mainline station. Offering excellent entertaining space, this property comprises of: Four spacious double bedrooms, two modern bathrooms, double reception with fireplace & wooden floors, integrated kitchen and ample storage throughout. The property has been recently modernised & further benefits from a lift and porter. EPC D.

Minimum Term: 12 months
Deposit Required: 6 weeks
Local Authority: City of Westminster
Council Tax Band: G
EPC Rating: D
Unfurnished

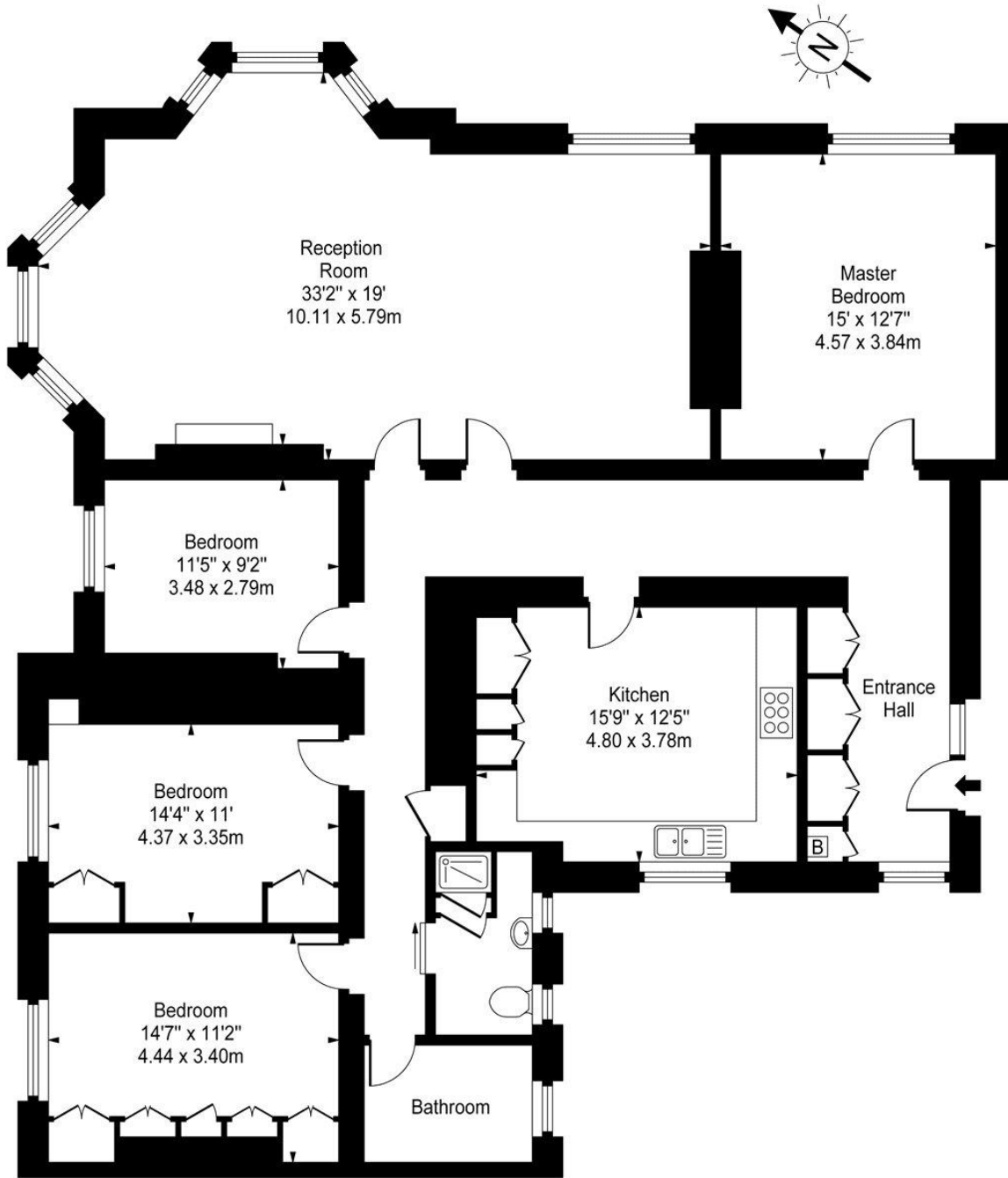


Chestertons Little Venice Lettings

26 Clifton Road
Maida Vale
London
W9 1SX
littlevenice@chestertons.co.uk
02072662369
chestertons.co.uk

Additional tenant charges apply (fees apply to non-AST tenancies only)
Tenancy Agreement Fee: £300
References per Tenant/Guarantor: £60
Inventory check (approx. £100 – £250 inc. VAT)
chestertons.co.uk/property-to-rent/applicable-fees

St. Marys Mansions, W2



Third Floor

Approx Gross Internal Area **1910 Sq Ft - 177.44 Sq M**

For Illustration Purposes Only - Not To Scale

www.goldlens.co.uk

Ref. No. 002911

