



# Fernhead Road

Queens Park, W9

£2,999 per month  
(£692.08 per week)

A newly refurbished second floor three bedroom flat located within a prime residential catchment area & situated between Bradiston Road & Denholme Road. Public transport includes Queens Park & Kilburn Park. EPC C



# Fernhead Road

Queens Park, W9

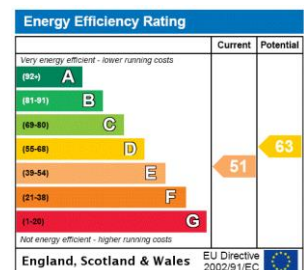
- Perfect for sharers!
- Smart Period Terraced Flat
- Three Double Bedrooms & Modern Bathroom
- Spacious Reception & Separate contemporary Kitchen
- Close To Queens Park Station
- EPC Rating D



A substantial second floor three bedroom flat located in a prime residential catchment area and situated between Bradiston Road and Denholme Road. Spacious reception room, separate contemporary kitchen, three double bedrooms and modern bathroom. Public transport includes Queens Park and Kilburn Park (underground-Bakerloo line) stations.

EPC rating C.

**Minimum Term:** 12 months  
**Deposit Required:** 5 weeks  
**Local Authority:** City Of Westminster  
**Council Tax Band:** E  
**EPC Rating:** E  
**Unfurnished**

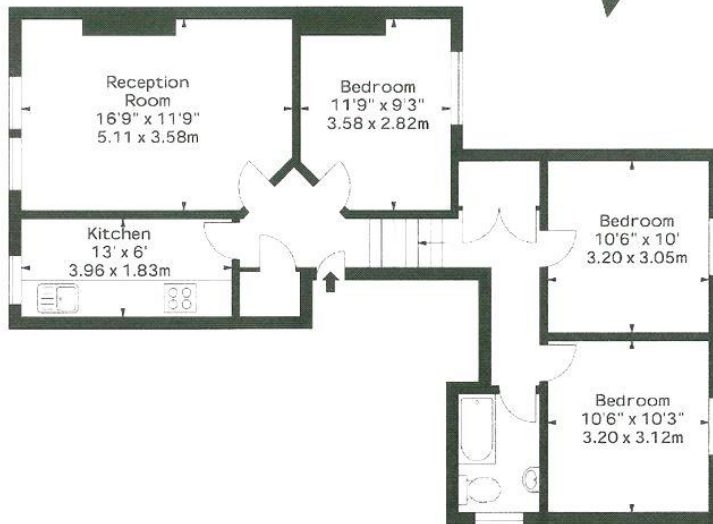


### *Chestertons Little Venice Lettings*

26 Clifton Road  
Maida Vale  
London  
W9 1SX  
littlevenice@chestertons.co.uk  
02072662369  
chestertons.co.uk

Additional tenant charges apply (fees apply to non-AST tenancies only)  
Tenancy Agreement Fee: £300  
References per Tenant/Guarantor: £60  
Inventory check (approx. £100 – £250 inc. VAT)  
chestertons.co.uk/property-to-rent/applicable-fees

Flat 7,  
172 - 174 Fernhead Road, W9  
Approx. Gross Internal Area \*  
771 Ft<sup>2</sup> - 71.63 M<sup>2</sup>



Second Floor

Illustration For Identification Purposes Only. Not To Scale

\* As Defined by RICS - Code of Measuring Practice

© BerridgeKirchner Floorplans.

Tel 020 7787 5544

