



Beech Court

Elmfield Way, W9

£2,800 per month
(£646.15 per week)

SHORT LET We are delighted to offer for short let this high-quality modern one bedroom ground floor apartment in a sought after development. EPC D.



Beech Court

Elmfield Way, W9

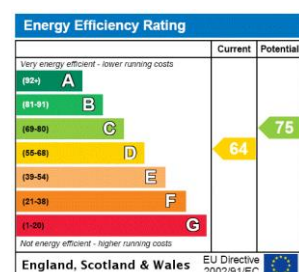
- Short let
- One bedroom
- Furnished
- 689 SQFT
- EPC D



We are delighted to offer for short let this high-quality modern one bedroom ground floor apartment in a sought after and convenient location within easy reach of shops, restaurants and public transport - Warwick Avenue (Bakerloo line), Royal Oak and Westbourne Park (Hammersmith & City, Circle line) tube stations.

Comprising of a spacious entrance hall, a very large bright sitting room with a balcony overlooking communal gardens, a modern fully fitted kitchen with integrated appliances including a dishwasher, a large master bedroom with fitted wardrobes, and a separate bathroom.

Minimum Term: 1 months
Deposit Required: 5 weeks
Local Authority: City Of Westminster
Council Tax Band: F
EPC Rating: D
Furnished



Chestertons Little Venice Lettings

26 Clifton Road
Maida Vale
London
W9 1SX
littlevenice@chestertons.co.uk
02072662369
chestertons.co.uk

Additional tenant charges apply (fees apply to non-AST tenancies only)
Tenancy Agreement Fee: £300
References per Tenant/Guarantor: £60
Inventory check (approx. £100 – £250 inc. VAT)
chestertons.co.uk/property-to-rent/applicable-fees

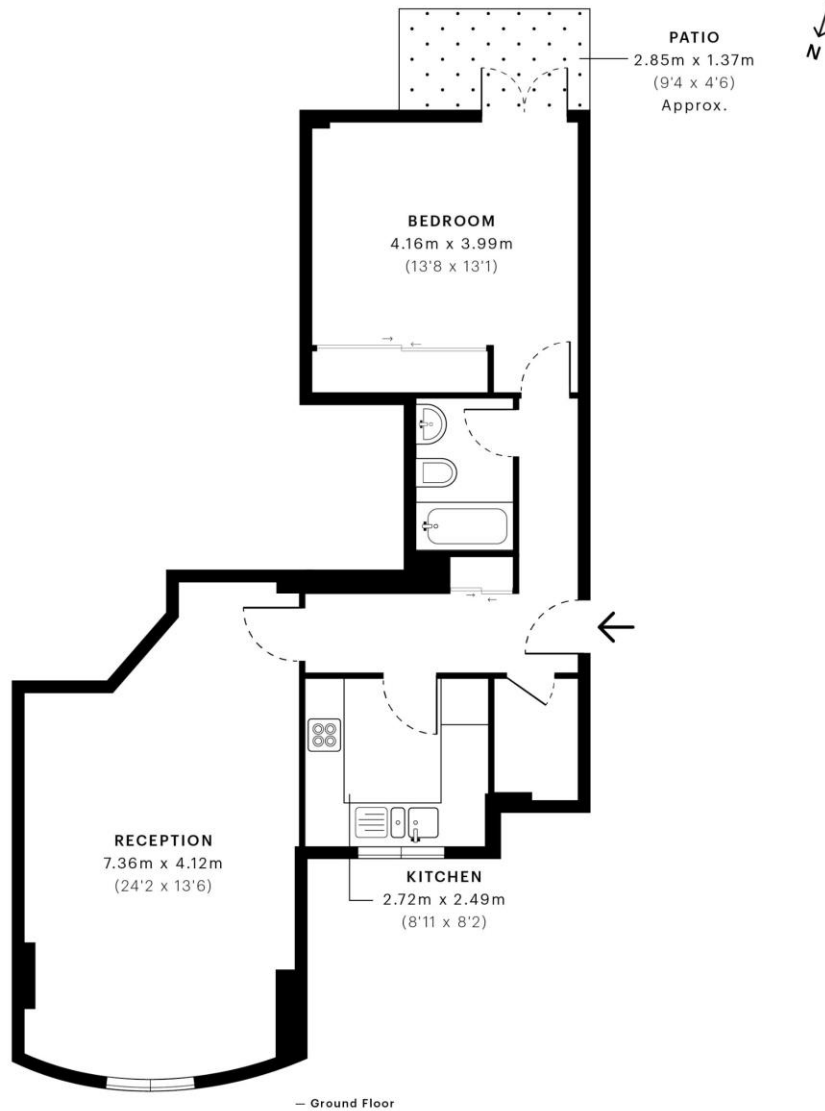


Beech Court, W9

CAPTURE DATE 04/07/2022 LASER SCAN POINTS 59,906,378

GROSS INTERNAL AREA

64.10 sqm / 689.97 sqft



GROSS INTERNAL AREA (GIA)
The footprint of the property
64.10 sqm / 689.97 sqft

NET INTERNAL AREA (NIA)
Excludes walls and external features
Includes washrooms, restricted head height
62.04 sqm / 667.79 sqft

EXTERNAL STRUCTURAL FEATURES
Balconies, terraces, verandas etc.
0.00 sqm / 0.00 sqft

RESTRICTED HEAD HEIGHT
Limited use area under 1.5 m
0.00 sqm / 0.00 sqft



Spec Verified floor plans are produced in accordance with Royal Institution of Chartered Surveyors' Property Measurement Standards. Plots and gardens are illustrative only and excluded from all area calculations. Due to rounding, numbers may not add up precisely. All measurements shown for the individual room lengths and widths are the maximum points of measurements captured in the scan.

IPMS 3B RESIDENTIAL 64.33 sqm / 692.44 sqft
IPMS 3C RESIDENTIAL 62.38 sqm / 671.45 sqft

SPEC ID 62bd570acaf5ad0db031576

Chesterton Global Ltd trading as Chestertons for themselves and for the vendor of this property whose agents they are, give notice that (i) these particulars do not constitute any part of an offer or contract, (ii) all statements contained within these particulars are made without responsibility on the part of Chestertons or the vendor, (iii) whilst made in good faith, none of the statements contained within these particulars are to be relied upon as a statement or representation of fact, (iv) any intending purchasers must satisfy themselves by inspection or otherwise as to the correctness of each of the statements contained within these particulars, (v) the vendor does not make or give either Chestertons or any person in their employment any authority to make or give representation or warranty whatsoever in relation to this property. Wide angle lenses may be used. ©Copyright Chestertons | Chesterton Global Ltd | Registered Office 40 Connaught Street, Hyde Park, London W2 2AB Registered Company Number 05334580.



This paper is
100% recyclable