



# Warrington Gardens

London, W9

£7,366.67 per month  
(£1,700 per week)

A stunning, newly refurbished bright and spacious three double bedroom penthouse apartments set on the fifth floor (with lift) within a sought after portered building located in Little Venice.



# Warrington Gardens

## London, W9

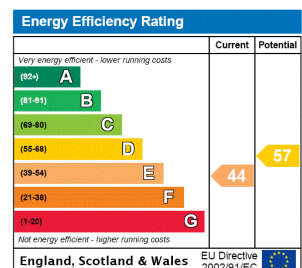
- Bright three double bedroom penthouse apartment
- Newly refurbished
- Private terrace
- Porter
- Lift
- Gated parking space for one car
- EPC E



A stunning, newly refurbished bright and spacious three double bedroom penthouse apartment set over the fifth floor (with lift) within a sought after portered building located in Little Venice.

The property has been extensively refurbished throughout to the highest standards and comprises, principal bedroom with an en-suite bathroom, a second bedroom with an en-suite shower room, a further bedroom, a spacious entrance hallway, newly fitted separate 17ft eat- in kitchen/ breakfast room and a bright 21ft reception room leading directly onto a private south facing balcony with stunning views across the London skyline.

**Minimum Term:** 6 months  
**Deposit Required:** 6 weeks  
**Local Authority:** City of Westminster  
**Council Tax Band:** G  
**EPC Rating:** E  
**Unfurnished**

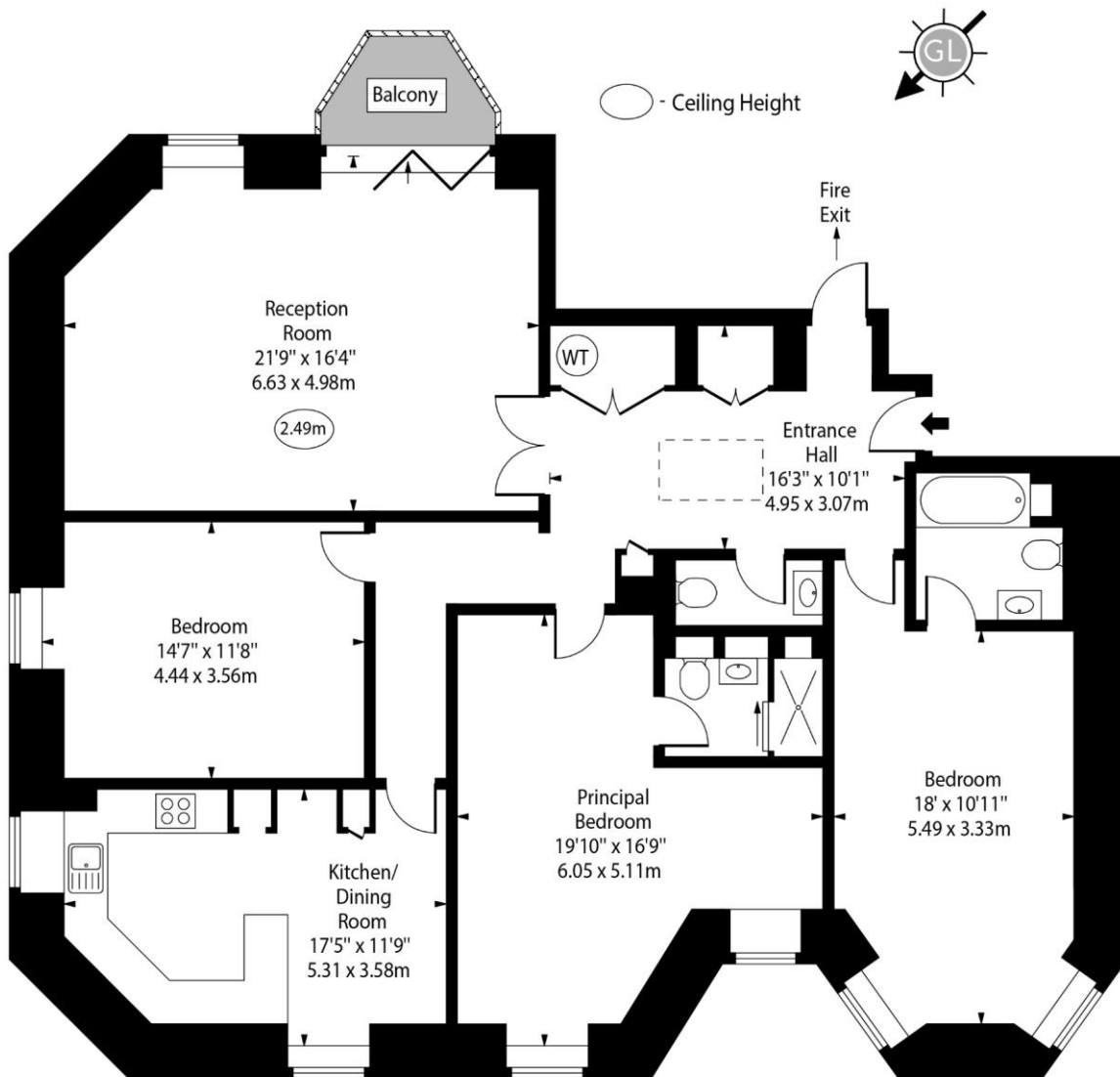


### Chestertons Little Venice Lettings

26 Clifton Road  
Maida Vale  
London  
W9 1SX  
littlevenice@chestertons.co.uk  
02072662369  
chestertons.co.uk

Additional tenant charges apply (fees apply to non-AST tenancies only)  
Tenancy Agreement Fee: £300  
References per Tenant/Guarantor: £60  
Inventory check (approx. £100 – £250 inc. VAT)  
chestertons.co.uk/property-to-rent/applicable-fees

Manor House Court,  
Warrington Gardens,  
Maida Vale, W9 2PZ



Fifth Floor

Approx Gross Internal Area 1515 Sq Ft - 140.74 Sq M

For Illustration Purposes Only - Not To Scale  
www.goldlens.co.uk  
Ref. No. 023264K

