



Clifton Gardens

Little Venice, W9

£9,500 per month
(£2,192.31 per week)

A truly stunning penthouse apartment over the top two floors of a white stucco period conversion backing onto the award winning 'Crescent' communal gardens.

CHESTERTONS



Clifton Gardens

Little Venice, W9

- Over 1600sqft
- 3 Bedrooms
- 3 Bathrooms
- Open Plan Kitchen/Reception Room
- Private Terrace Overlooking "Crescent" Communal Gardens
- Off Street Parking
- Sonos sound system throughout



A truly stunning penthouse apartment over the top two floors of a white stucco period conversion backing onto the award winning 'Crescent' communal gardens.

This beautifully presented property, accessed directly from the lift, boasts a bright 32' reception/kitchen area with lofted ceilings leading out to a roof terrace with magnificent views over the gardens below.

Further highlights includes three double bedrooms, two bathrooms and non-allocated off street parking.

Minimum Term: 12 months
Deposit Required: 6 weeks
Local Authority: City Of Westminster
Council Tax Band: H
EPC Rating: E
Furnished, Unfurnished

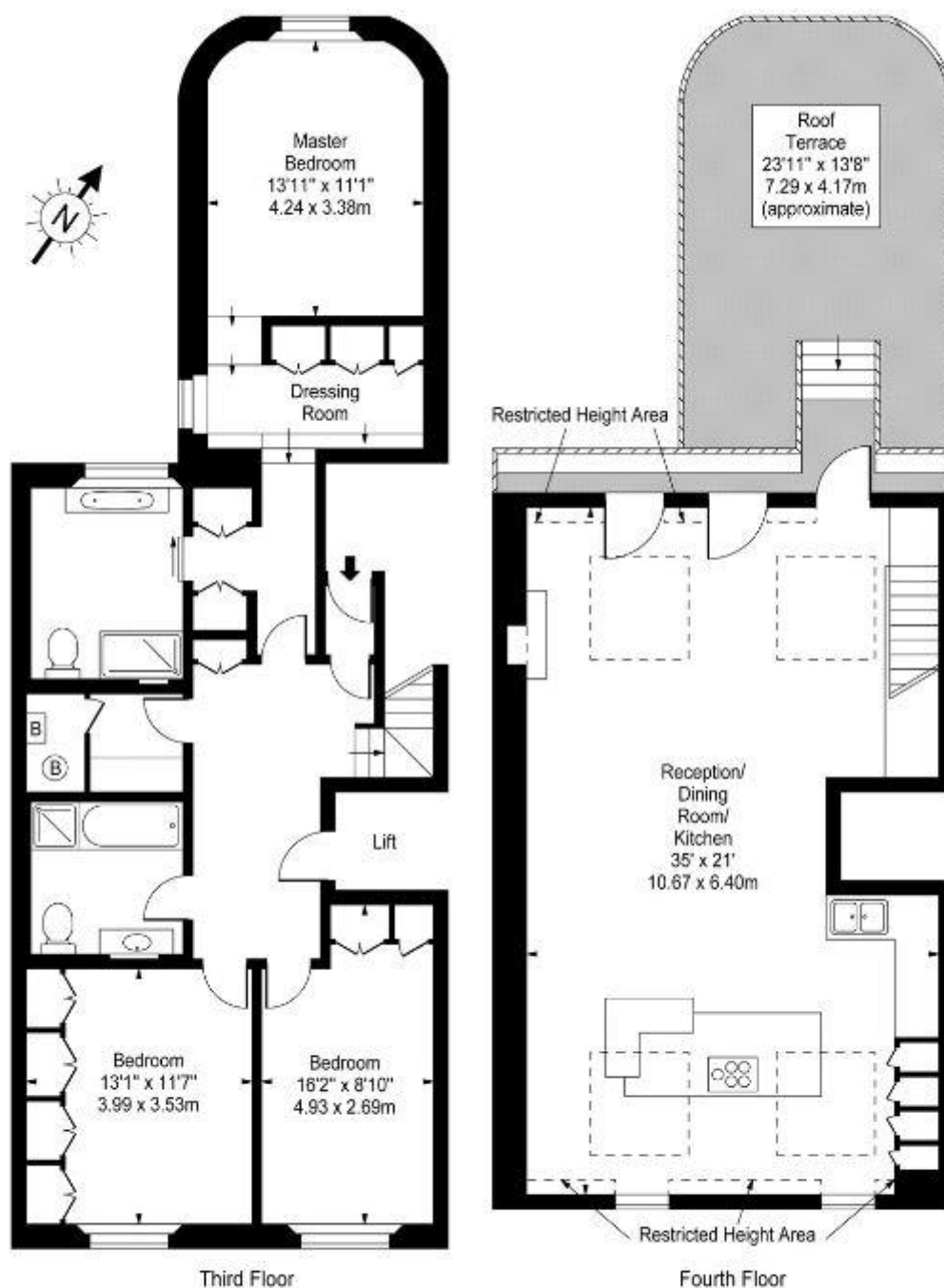
Energy Efficiency Rating		
	Current	Potential
Very energy efficient - lower running costs		
(92-100) A		
(81-91) B		
(69-80) C		
(55-68) D		
(39-54) E	44	46
(21-38) F		
(1-20) G		
Not energy efficient - higher running costs		
England, Scotland & Wales		EU Directive 2002/91/EC

Chestertons Little Venice Lettings

26 Clifton Road
Maida Vale
London
W9 1SX
littlevenice@chestertons.co.uk
02072662369
chestertons.co.uk

Additional tenant charges apply (fees apply to non-AST tenancies only)
Tenancy Agreement Fee: £300
References per Tenant/Guarantor: £60
Inventory check (approx. £100 – £250 inc. VAT)
chestertons.co.uk/property-to-rent/applicable-fees

Clifton Gardens, W9



Approx Gross Internal Area 1626 Sq Ft - 151.06 Sq M
(Including Restricted Height Area)

For Illustration Purposes Only - Not To Scale
www.goldlens.co.uk
Ref. No. 010383J

