



Wrentham Avenue

London, NW10

£4,117 per month
(£950.08 per week)

This superbly located two bedroom apartment is set across the top floor of this gorgeous conversion offering approximately 850sqft of bright, brand newly refurbished living space. This home channels a neutral palette incorporating bold colours.



Wrentham Avenue

London, NW10

- Open-plan Kitchen / Living
- Two bedrooms
- Abundance of natural light
- Integrated storage
- Study space
- EPC B



This superbly located two bedroom apartment is set across the top floor of this gorgeous conversion offering approximately 850sqft of bright, brand newly refurbished living space. This home channels a neutral palette incorporating bold colours with statement décor to create a beautiful place to live.

We are pleased to present a large open plan kitchen and living area with high ceilings and characterful eaves; an abundance of natural light and storage; a spacious principle bedroom with floor to ceiling windows and integrated storage space; an additional study area; a second bedroom with triple aspect windows and a stone tiled bathroom with black industrial finishes.

Minimum Term: 2 months
Deposit Required: 2 weeks
Local Authority: London Borough of Brent
Council Tax Band: F
EPC Rating: B
Furnished

Energy Efficiency Rating		
	Current	Potential
Very energy efficient - lower running costs		
A (92-100)		
B (81-91)	81	81
C (69-80)		
D (55-68)		
E (39-54)		
F (21-38)		
G (1-20)		
Not energy efficient - higher running costs		
England, Scotland & Wales		EU Directive 2002/91/EC

Chestertons Little Venice Lettings

26 Clifton Road
Maida Vale
London
W9 1SX
littlevenice@chestertons.co.uk
02072662369
chestertons.co.uk

Additional tenant charges apply (fees apply to non-AST tenancies only)
Tenancy Agreement Fee: £300
References per Tenant/Guarantor: £60
Inventory check (approx. £100 – £250 inc. VAT)
chestertons.co.uk/property-to-rent/applicable-fees

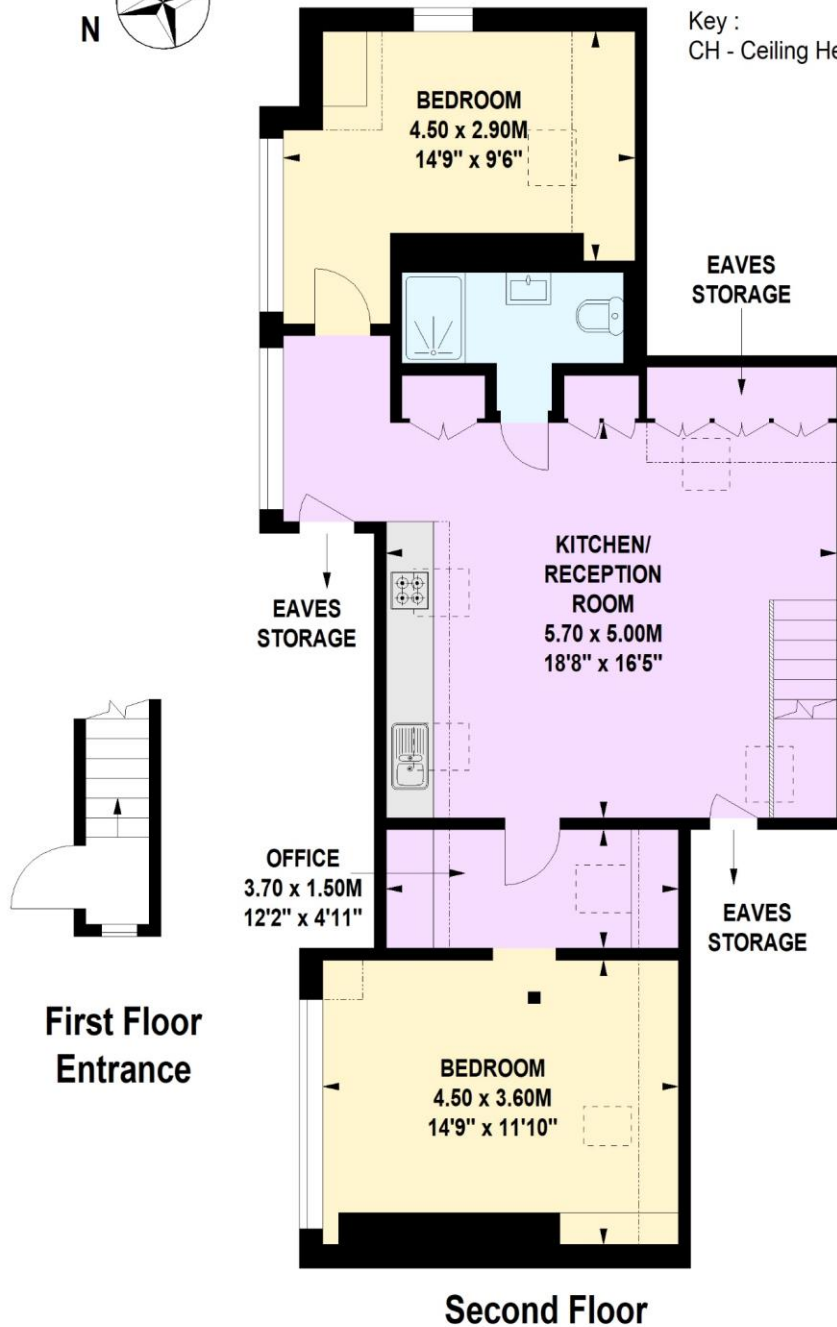
Wrentham Avenue

Approximate gross internal area

78.87 sq m / 849 sq ft



Key :
CH - Ceiling Height



**Not to scale, for guidance only and must not be relied upon as a statement of fact.
All measurements and areas are approximate only**

