



Sutherland Avenue

Maida Vale, W9

£6,500 per month
(£1,500 per week)

A charming 3 bedroom garden maisonette on one of Little Venice's prime residential avenues. This beautiful period apartment has the added benefit of a large private garden leading to some of the most sought after communal gardens in the area.



Sutherland Avenue

Maida Vale, W9

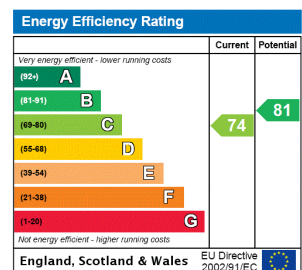
- Charming Period Maisonette
- Three Double Bedrooms With Wooden Floors
- Large Reception Floors & Doors To Private Garden
- Prime Little Venice Residential Avenue
- EPC Rating E



A fabulous 3 bedroom garden maisonette in one of Little Venice's prime residential avenues. Light and airy the property comprises: sizeable double reception with wood floors & french doors to large private patio garden; modern kitchen/ diner; master Bedroom with large en-suite bathroom; 2 further double bedrooms; a shower room and a separate laundry/ utility room.

Moments from the cafes of both Formosa Street & Clifton Road, with Warwick Avenue a short walk away. Excellent access to town and Paddington Mainline Station.

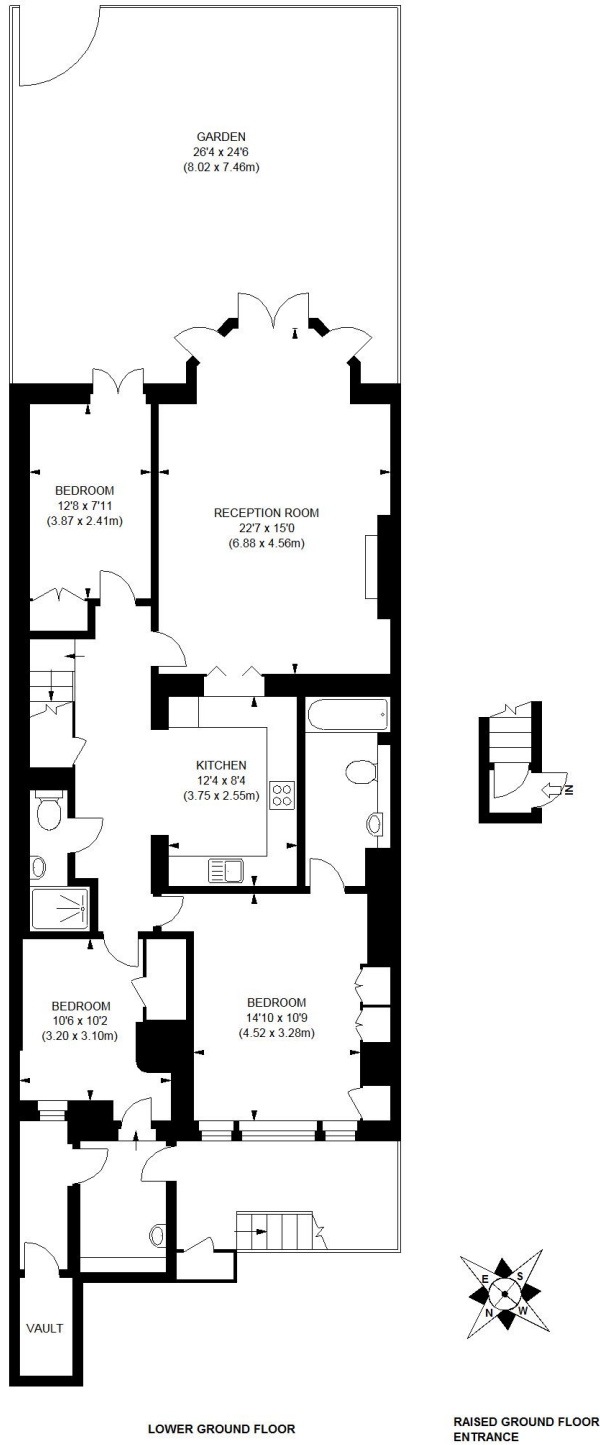
Minimum Term: 12 months
Deposit Required: 6 weeks
Local Authority: City of Westminster
Council Tax Band: C
EPC Rating: C
Furnished, Unfurnished



Chestertons Little Venice Lettings

26 Clifton Road
Maida Vale
London
W9 1SX
littlevenice@chestertons.co.uk
02072662369
chestertons.co.uk

Additional tenant charges apply (fees apply to non-AST tenancies only)
Tenancy Agreement Fee: £300
References per Tenant/Guarantor: £60
Inventory check (approx. £100 – £250 inc. VAT)
chestertons.co.uk/property-to-rent/applicable-fees



APPROX. GROSS INTERNAL FLOOR AREA 1281 SQ FT / 119.00 SQ M

Illustration for identification purposes only, not to scale
 All measurements are maximum, and includes wardrobes and window bays where applicable
 Prepared by Pixangle © . Tel 020 8870 2118

Chesterton Global Ltd trading as Chestertons for themselves and for the vendor of this property whose agents they are, give notice that (i) these particulars do not constitute any part of an offer or contract, (ii) all statements contained within these particulars are made without responsibility on the part of Chestertons or the vendor, (iii) whilst made in good faith, none of the statements contained within these particulars are to be relied upon as a statement or representation of fact, (iv) any intending purchasers must satisfy themselves by inspection or otherwise as to the correctness of each of the statements contained within these particulars, (v) the vendor does not make or give either Chestertons or any person in their employment any authority to make or give representation or warranty whatsoever in relation to this property. Wide angle lenses may be used. ©Copyright Chestertons | Chesterton Global Ltd | Registered Office 40 Connaught Street, Hyde Park, London W2 2AB Registered Company Number 05334580.

