

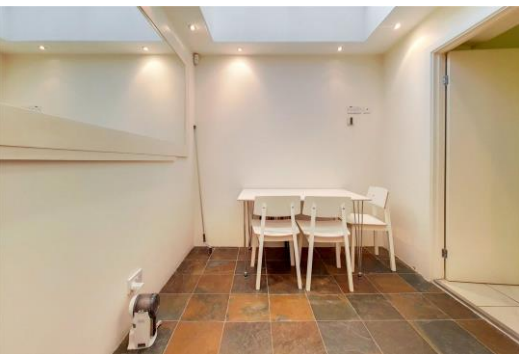


St. Peters Place

London, W9

£4,500 per month
(£1,038.46 per week)

This 3-4 bedroom modern family townhouse set in a quiet gated mews development with parking comprises a dining room with a separate kitchen on the ground floor, a second reception room, two double bedrooms and a bathroom on the first floor



St. Peters Place

London, W9

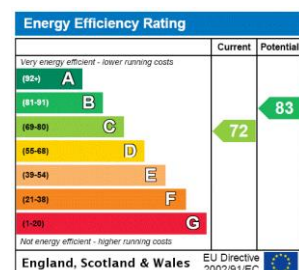
- 3 Bedrooms
- Two reception rooms
- Two bathrooms
- Unfurnished
- Mews house
- 1724 SQFT
- EPC C



This three bedroom modern family townhouse set in a quiet gated mews development comprises a reception/dining room and a separate kitchen on the ground floor, a second reception room, two double bedrooms and a bathroom on the first floor; the master bedroom suite with substantial eves storage and a further bathroom is situated across the top floor. Further benefits include an integrated garage with utility room, W/C and an allocated parking space.

The property is well located for access to Paddington Recreation Ground. Warwick Avenue station, Maida Vale station (Bakerloo line) and Westbourne Park station (Hammersmith & City and Circle line). Queen's Park, Notting Hill and St. John's Wood all within close proximity.

Minimum Term: 12 months
Deposit Required: 6 weeks
Local Authority: City Of Westminster
Council Tax Band: G
EPC Rating: C
Unfurnished



Chestertons Little Venice Lettings

26 Clifton Road
Maida Vale
London
W9 1SX
littlevenice@chestertons.co.uk
02072662369
chestertons.co.uk

Additional tenant charges apply (fees apply to non-AST tenancies only)
Tenancy Agreement Fee: £300
References per Tenant/Guarantor: £60
Inventory check (approx. £100 – £250 inc. VAT)
chestertons.co.uk/property-to-rent/applicable-fees

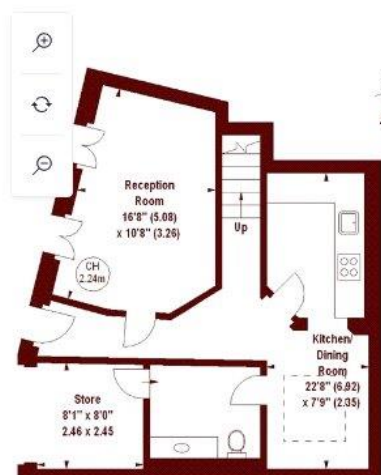
St. Peters Place, W9

APPROX. GROSS INTERNAL FLOOR AREA 1724 SQFT / 160.16 SQM

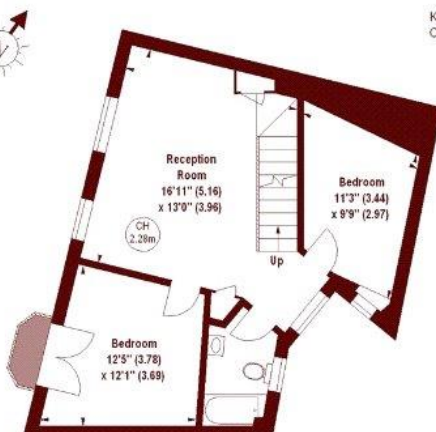
(Including Eaves Storage)

Eaves Storage

93 SQFT / 8.64 SQM



GROUND FLOOR



FIRST FLOOR

Key:
CH - Ceiling Height



SECOND FLOOR

