



Warrington Crescent

London, W9

£3,146 per month
(£726 per week)

Thoughtfully renovated, two bedroom period conversion, to rent, set in the ever popular Warrington Crescent.

CHESTERTONS



Warrington Crescent

London, W9

- Furnished
- Two Double Bedrooms
- Large Reception and Master
- Immaculate Bright 2nd Floor Period Conversion
- Newly renovated to an extremely high standard
- Landscaped Communal Gardens
- Prime Tree Lined Residential Street



Thoughtfully renovated, two bedroom period conversion, to rent, set in the ever popular Warrington Crescent.

This lovely two bedroom flat is located on one of Little Venice's most sought after prime residential streets and comprises of two double bedrooms, one bathroom, gorgeous open plan living and kitchen area with open views front and back.

Bedroom views over the gardens
20' x 16' reception/kitchen
13' x 13' master bedroom

Minimum Term: 12 months
Deposit Required: 5 weeks
Local Authority: City Of Westminster
Council Tax Band: F
EPC Rating: D
Furnished

Energy Efficiency Rating		
	Current	Potential
Very energy efficient - lower running costs		
A (92-100)		
B (81-91)		
C (69-80)		80
D (55-68)	60	
E (39-54)		
F (21-38)		
G (1-20)		
Not energy efficient - higher running costs		
England, Scotland & Wales		EU Directive 2002/91/EC

Chestertons Little Venice Lettings

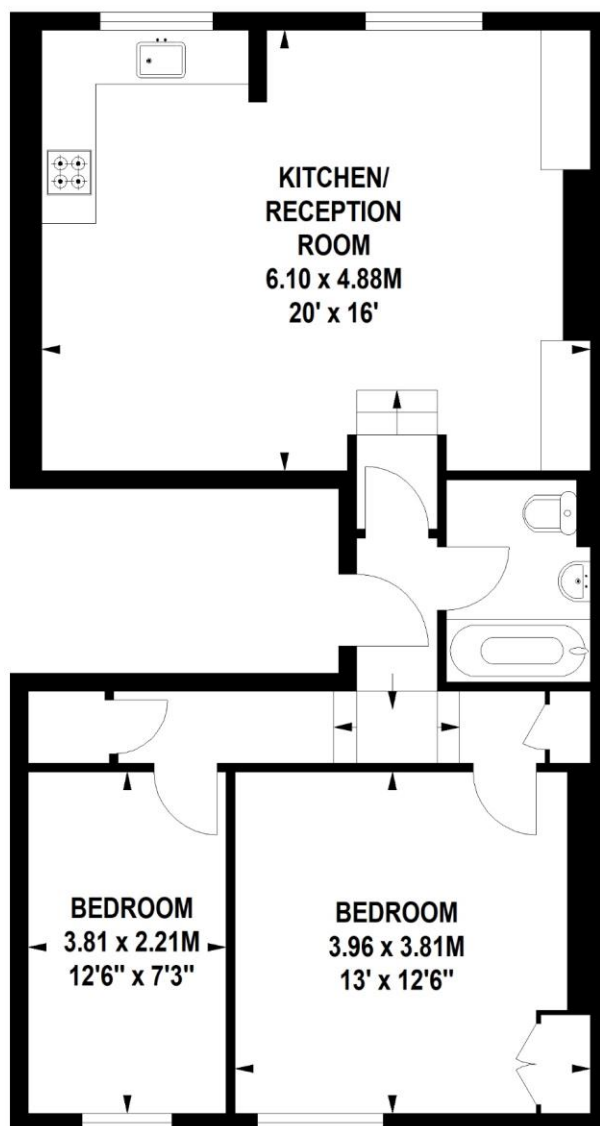
26 Clifton Road
Maida Vale
London
W9 1SX
littlevenice@chestertons.co.uk
02072662369
chestertons.co.uk

Additional tenant charges apply (fees apply to non-AST tenancies only)
Tenancy Agreement Fee: £300
References per Tenant/Guarantor: £60
Inventory check (approx. £100 – £250 inc. VAT)
chestertons.co.uk/property-to-rent/applicable-fees

Warrington Crescent, W9

Approximate gross internal area

66.89 sq m / 720 sq ft



Second Floor

**Not to scale, for guidance only and must not be relied upon as a statement of fact.
All measurements and areas are approximate only**

