

CHESTERTONS





Cadogan Square

Knightsbridge, SW1X 0JU

“ *Exceptional penthouse of circa 2,000 sq. ft., with direct lift access and wood flooring throughout, offering outstanding views and a substantial south-facing roof terrace.* **”**

Long let: £3,765 per week / £16,315 per month

3



3



*1,987
sqft*





Property Description

A bright and spacious top-floor penthouse maisonette located on Cadogan Square. This well-proportioned triplex offers direct lift access into the apartment and benefit from air conditioning in the principal bedroom. The property occupies the entire upper level and features a wraparound open-plan reception, dining, and kitchen area suitable for both entertaining and day-to-day living.

The penthouse includes three double bedrooms, each with an en-suite bathroom and built-in storage. The apartment also benefits from a private balcony and a large roof terrace with views over the gardens of Cadogan Square, including an outlook towards the tennis court. Access to the communal gardens is available by application at an additional cost.

Property available to rent immediately.

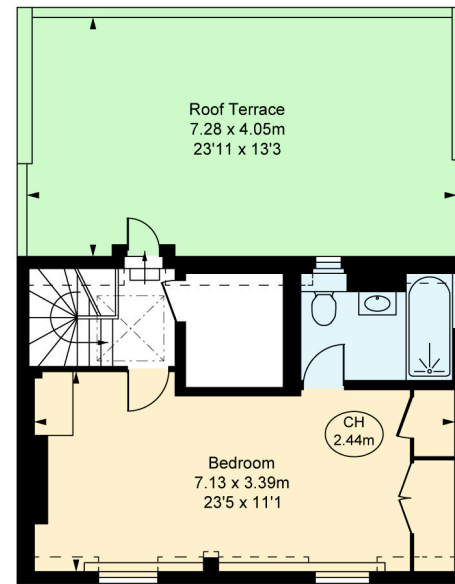




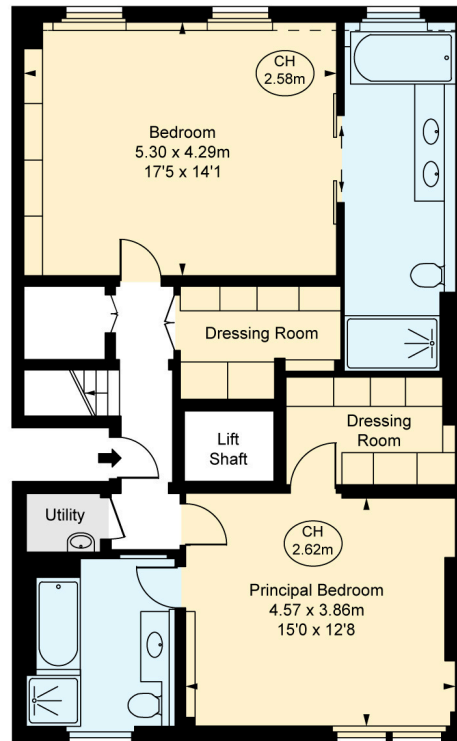


Cadogan Square, SW1X
 Approximate Gross Internal Area
184.62 sq m / 1,987 sq ft
 (Excluding Lift)

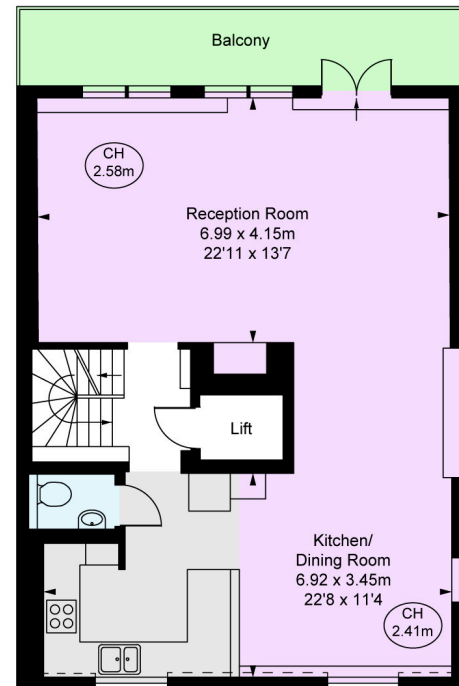
(Including restricted height
 under 1.5m [= = =])
 (CH = Ceiling Heights)



Sixth Floor
 Approximate Gross Internal Area
36.43 sq m / 392 sq ft



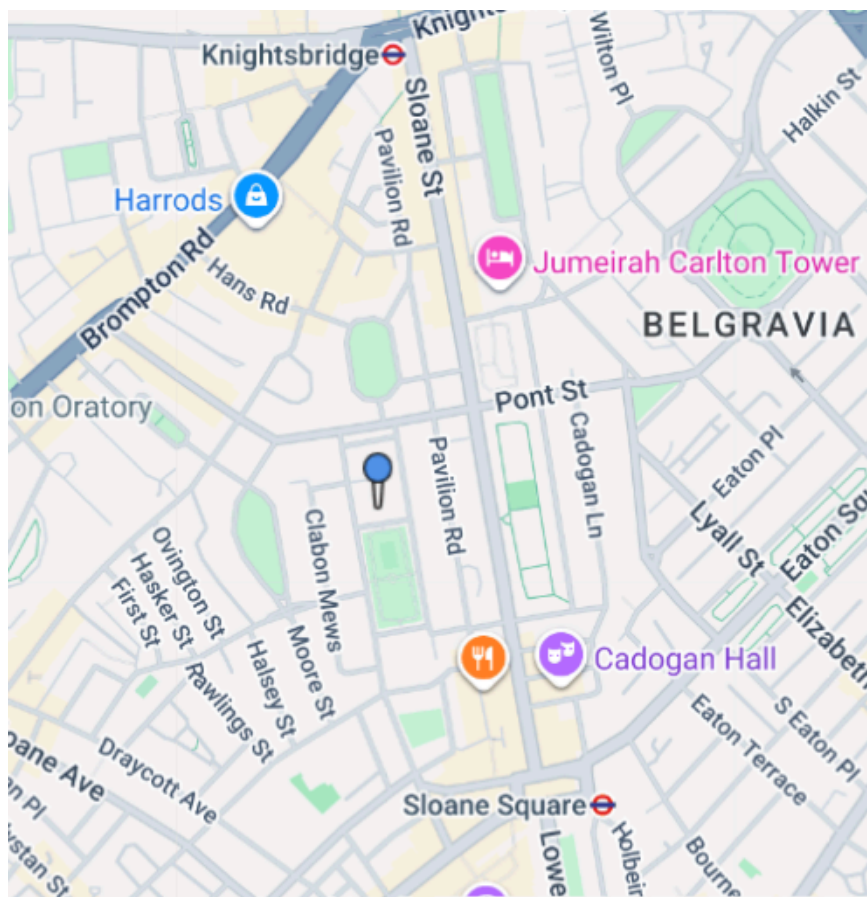
Fourth Floor
 Approximate Gross Internal Area
81.82 sq m / 881 sq ft



Fifth Floor
 Approximate Gross Internal Area
66.37 sq m / 714 sq ft

Property Location

CHESTERTONS



Score	Energy rating	Current	Potential
92+	A		
81-91	B		
69-80	C		
55-68	D	57 D	58 D
39-54	E		
21-38	F		
1-20	G		

Additional tenant charges apply (fees apply to non-AST tenancies only)

Tenancy Agreement Fee: £300

References per Tenant/Guarantor: £60

Inventory check (approx. £100 – £250 inc. VAT)

chestertons.co.uk/property-to-rent/applicable-fees

Chestertons Knightsbridge

31 Lowndes St,

London

SW1X 9HX

chestertons.co.uk

Chesterton Global Ltd trading as Chestertons for themselves and for the vendor of this property whose agents they are, give notice that (i) these particulars do not constitute any part of an offer or contract, (ii) all statements contained within these particulars are made without responsibility on the part of Chestertons or the vendor, (iii) whilst made in good faith, none of the statements contained within these particulars are to be relied upon as a statement or representation of fact, (iv) any intending purchasers must satisfy themselves by inspection or otherwise as to the correctness of each of the statements contained within these particulars, (v) the vendor does not make or give either Chestertons or any person in their employment any authority to make or give representation or warranty whatsoever in relation to this property. Wide angle lenses may be used. ©Copyright Chestertons | Chesterton Global Ltd | Registered Office 40 Connaught Street, Hyde Park, London W2 2AB Registered Company Number 05334580.