



# Pont Street

London, SW1X

£6,391.67 per month  
(£1,475.00 per week)

A beautifully presented period apartment of circa 1,081 sq ft, finished to a high quality contemporary standard throughout. Located on the corner of Pont Street and Sloane Street in a stunning period building with lift access.



# Pont Street

London, SW1X

- A reception room with great views and good natural light
- Separate modern kitchen
- Two double bedrooms
- Two bathrooms
- Lift access
- Ideally located in between Knightsbridge & Sloane square

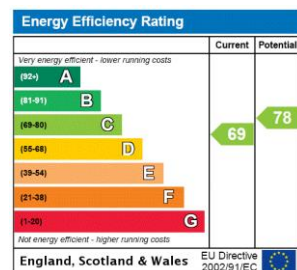


A beautifully presented period apartment of circa 1,081 sq ft, finished to a high quality contemporary standard throughout. Located on the corner of Pont Street and Sloane Street in a stunning period building with lift access.

The property comprises of a spacious reception/dining room with large windows providing plenty of natural light, separate fully fitted kitchen, two modern bathrooms and two double bedrooms with built-in storage.

Located just a few minutes' walk from Hyde Park. Also in close

**Minimum Term:** 12 months  
**Deposit Required:** £8,850.00  
**Local Authority:** Royal Borough of Kensington & Chelsea  
**Council Tax Band:** H  
**EPC Rating:** C  
**Unfurnished**



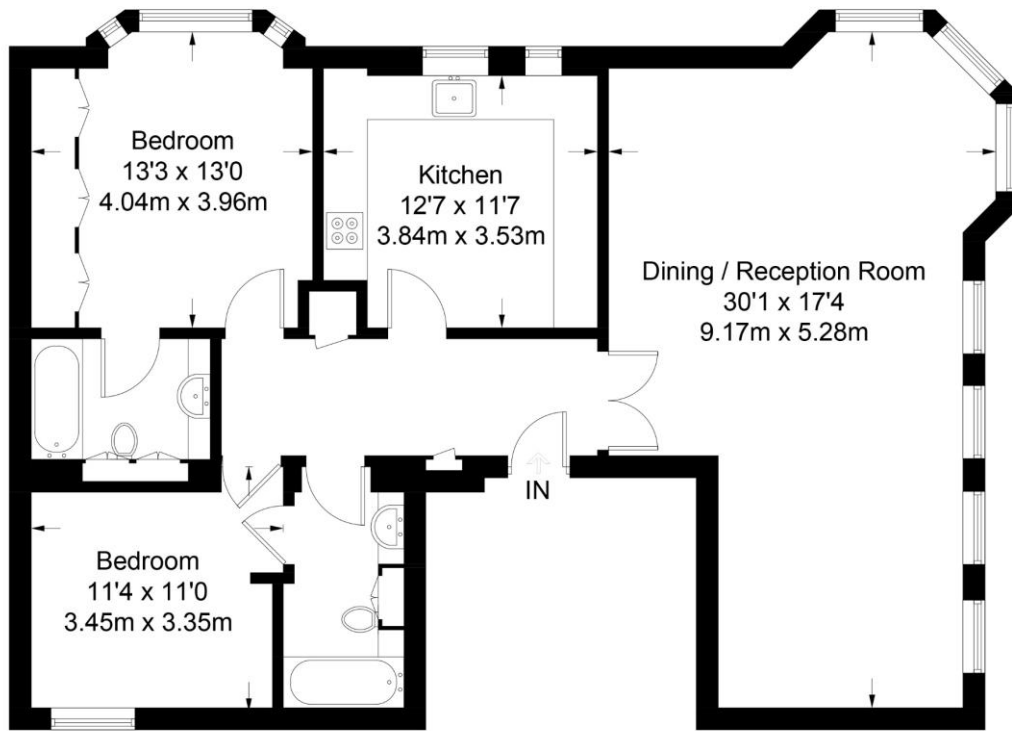
### Chestertons Knightsbridge & Belgravia Lettings

31 Lowndes Street  
 London  
 SW1X 9HX  
 knightsbridge@chestertons.co.uk  
 02072353530  
 chestertons.co.uk

Additional tenant charges apply (fees apply to non-AST tenancies only)  
 Tenancy Agreement Fee: £300  
 References per Tenant/Guarantor: £60  
 Inventory check (approx. £100 – £250 inc. VAT)  
 chestertons.co.uk/property-to-rent/applicable-fees

# Pont Street

Approximate Gross Internal Area = 1075 sq ft / 99.9 sq m



## Second Floor

Not to scale, for guidance only and must not be relied upon as a statement of fact.  
All measurements and areas are approximate only and have been prepared in accordance with the current edition of the RICS Code of Measuring Practice.

