



Eaton Terrace

Belgravia, SW1W

£12,400 per month
(£2,861.54 per week)

A stunning townhouse of circa 2,529 sq. ft., arranged over four floors, located in central Belgravia. Features include a private garage, rear garden, wood flooring and high ceilings.



Eaton Terrace

Belgravia, SW1W

- Private garage
- Paved garden
- Arranged over four floors
- Unfurnished
- Wood flooring

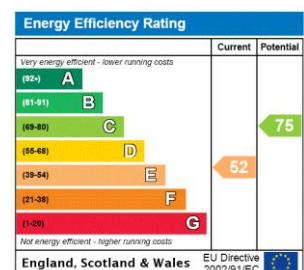


A stunning townhouse of circa 2,529 sq ft, arranged over four floors, located in central Belgravia. Features include a private garage, rear garden, wood flooring and high ceilings.

Decorated in neutral tones throughout, the property includes a spacious double reception, large kitchen/dining room, master bedroom with en-suite bathroom, three further double bedrooms, family bathroom and guest WC. The house also benefits from a lovely patio leading onto a decked terrace.

Eaton Terrace is location moments from Pimlico Road and Sloane Square, with Kings Road and Victoria Station also just a short walk.

Minimum Term: 12 months
Deposit Required: £17,653.85
Local Authority: Westminster City Council
Council Tax Band: H
EPC Rating: E
Unfurnished



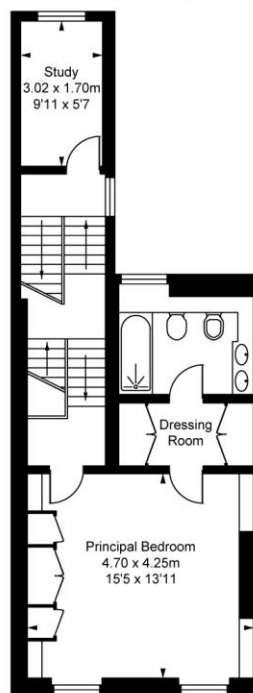
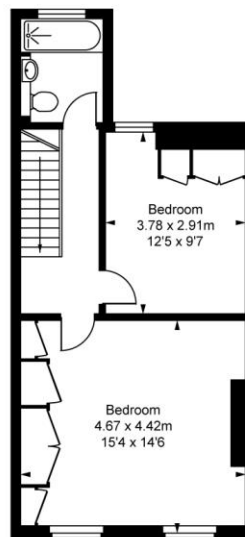
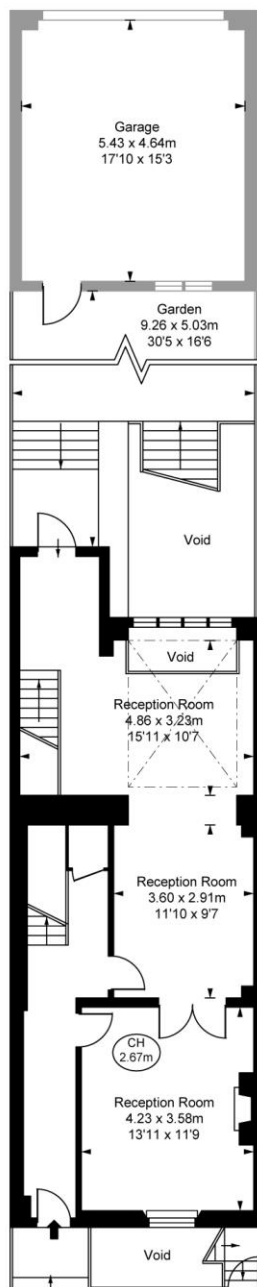
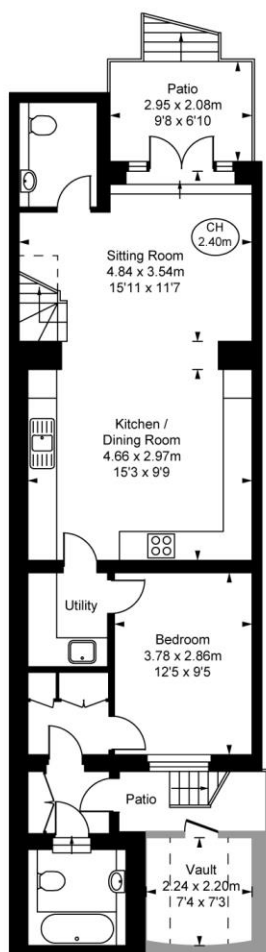
Chestertons Knightsbridge & Belgravia Lettings

31 Lowndes Street
 London
 SW1X 9HX
knightsbridglettingsusers@chestertons.co.uk
 02072353530
chestertons.co.uk

Additional tenant charges apply (fees apply to non-AST tenancies only)
 Tenancy Agreement Fee: £300
 References per Tenant/Guarantor: £60
 Inventory check (approx. £100 – £250 inc. VAT)
chestertons.co.uk/property-to-rent/applicable-fees

Eaton Terrace, SW1W
 ■ Approximate Gross Internal Area
 214.92 sq m / 2,313 sq ft
 ■ Garage
 25.06 sq m / 270 sq ft
 ■ Vault
 4.86 sq m / 52 sq ft

Total Areas Shown On Plan
244.84 sq m / 2,635 sq ft
 (Excluding Void)
 (Including restricted height
 under 1.5m $\square = \square$)
 (CH = Ceiling Heights)



This plan is not to scale. It is for guidance and not for valuation purposes.
 All measurements and areas are approximate only, and have been prepared in accordance with the current edition of the RICS Code of Measuring Practice.
 © Fullmark Performance

