



# Eaton Terrace

Belgravia, SW1W

£14,000 per month  
(£3,230.77 per week)

A stunning townhouse of circa 2,529 sq. ft., arranged over four floors, located in central Belgravia. Features include a private garage, rear garden, wood flooring and high ceilings.

CHESTERTONS



# Eaton Terrace

Belgravia, SW1W

- Private garage
- Paved garden
- Arranged over four floors
- Unfurnished
- Wood flooring

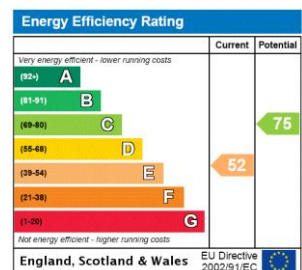


A stunning townhouse of circa 2,529 sq ft, arranged over four floors, located in central Belgravia. Features include a private garage, rear garden, wood flooring and high ceilings.

Decorated in neutral tones throughout, the property includes a spacious double reception, large kitchen/dining room, master bedroom with en-suite bathroom, three further double bedrooms, family bathroom and guest WC. The house also benefits from a lovely patio leading onto a decked terrace.

Eaton Terrace is location moments from Pimlico Road and Sloane Square, with Kings Road and Victoria Station also just a short walk.

**Minimum Term:** 12 months  
**Deposit Required:** £19,384.62  
**Local Authority:** Westminster City Council  
**Council Tax Band:** H  
**EPC Rating:** E  
**Unfurnished**



### Chestertons Knightsbridge & Belgravia Lettings

31 Lowndes Street  
 London  
 SW1X 9HX  
 knightsbridge@chestertons.co.uk  
 02072353530  
 chestertons.co.uk

Additional tenant charges apply (fees apply to non-AST tenancies only)  
 Tenancy Agreement Fee: £300  
 References per Tenant/Guarantor: £60  
 Inventory check (approx. £100 – £250 inc. VAT)  
[chestertons.co.uk/property-to-rent/applicable-fees](http://chestertons.co.uk/property-to-rent/applicable-fees)

**Eaton Terrace, SW1W**  
 Approximate Gross Internal Area  
 214.92 sq m / 2,313 sq ft

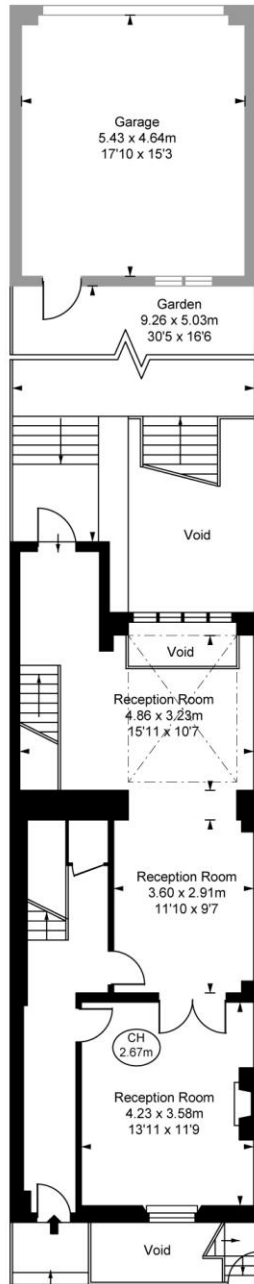
Garage  
 25.06 sq m / 270 sq ft

Vault  
 4.86 sq m / 52 sq ft

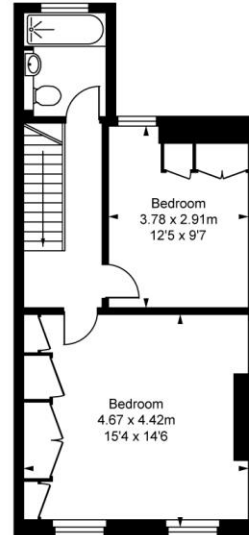
**Total Areas Shown On Plan**  
 244.84 sq m / 2,635 sq ft  
 (Excluding Void)  
 (Including restricted height  
 under 1.5m  $\square = \square \square$ )  
 (CH = Ceiling Heights)



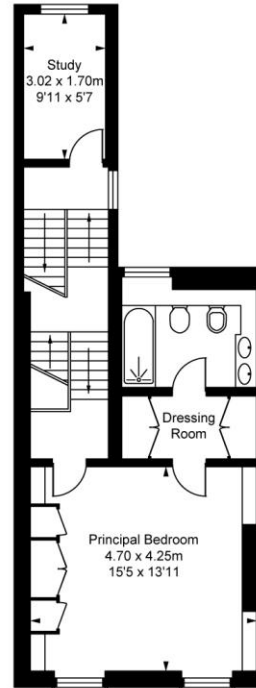
**Lower Ground Floor**  
 Approximate Gross Internal Area  
 66.65 sq m / 717 sq ft



**Ground Floor**  
 Approximate Gross Internal Area  
 58.53 sq m / 630 sq ft



**Second Floor**  
 Approximate Gross Internal Area  
 41.92 sq m / 451 sq ft



**First Floor**  
 Approximate Gross Internal Area  
 47.82 sq m / 515 sq ft

This plan is not to scale. It is for guidance and not for valuation purposes.  
 All measurements and areas are approximate only, and have been prepared in accordance with the current edition of the RICS Code of Measuring Practice.  
 © Future Performance

