



# Pont Street

London, SW1X

£6,478.33 per month  
(£1,495 per week)

Beautifully presented period apartment of circa 1,098 sq ft, finished to a high quality contemporary standard. The property comprises of a spacious reception/dining room, fully fitted kitchen, two modern bathrooms and two double bedrooms.



# Pont Street

## London, SW1X

- A reception room with great views and good natural light
- Separate modern kitchen
- Two double bedrooms
- Two bathrooms (1 en-suite)
- Ideally located in between Knightsbridge & Sloane square

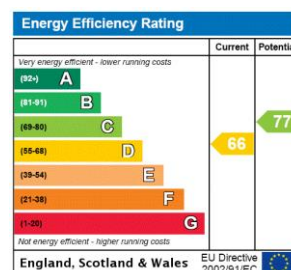


A beautifully presented period apartment of circa 1,098 sq ft, finished to a high quality contemporary standard throughout. Located on the corner of Pont Street and Sloane Street.

The property comprises of a spacious reception/dining room with large windows providing plenty of natural light, separate fully fitted kitchen, two modern bathrooms and two double bedrooms with built-in storage.

Located just a few minutes' walk from Hyde Park. Also in close walking distance are both Knightsbridge and Hyde Park tube stations and the popular shopping experience offered on Brompton Road

**Minimum Term:** 12 months  
**Deposit Required:** £8,970.00  
**Local Authority:** Royal Borough of Kensington & Chelsea  
**Council Tax Band:** G  
**EPC Rating:** D  
**Unfurnished**



### *Chestertons Knightsbridge & Belgravia Lettings*

31 Lowndes Street  
 London  
 SW1X 9HX  
[knightsbridge@chestertons.co.uk](mailto:knightsbridge@chestertons.co.uk)  
 02072353530  
[chestertons.co.uk](http://chestertons.co.uk)

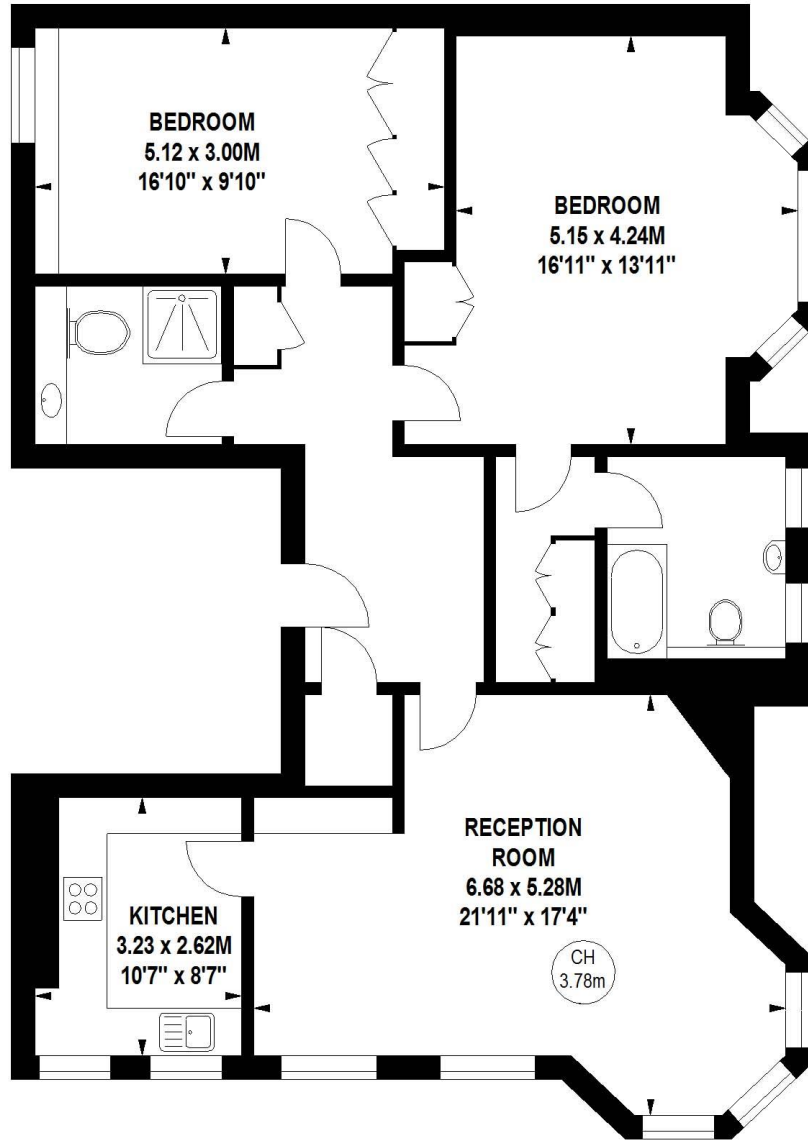
Additional tenant charges apply (fees apply to non-AST tenancies only)  
 Tenancy Agreement Fee: £300  
 References per Tenant/Guarantor: £60  
 Inventory check (approx. £100 – £250 inc. VAT)  
[chestertons.co.uk/property-to-rent/applicable-fees](http://chestertons.co.uk/property-to-rent/applicable-fees)

# Pont Street, SW1X

Approximate gross internal area

104.51 sq m / 1125 sq ft

Key :  
CH - Ceiling Height



## First Floor

The floor plan is not to scale and measurements and areas shown are approximate and therefore should be used for illustrative purposes only. The plan has been prepared in accordance with the RICS code of Measuring Practice and whilst we have confidence in the information produced, it must not be relied on.

If there is any aspect of particular importance, you should carry out or commission your own inspection of the property.

Copyright of FeaturePRO.

