



Cadogan Lane

London, SW1X

£9,750 per month
(£2,250 per week)

Immaculately presented mews house which has been completely renovated throughout whilst retaining the charm of the original façade. The house has been meticulously finished throughout and features a private garage, garden and ample storage.

The property offers a private garage and four floors of generous living space, comprising of a ground floor formal reception room and a stunning kitchen/dining room, both with beautiful wood flooring. All three bedrooms benefit from en suite bathrooms and fitted wardrobes and are situated over the 1st and 2nd floors. The property is presented unfurnished.



Cadogan Lane

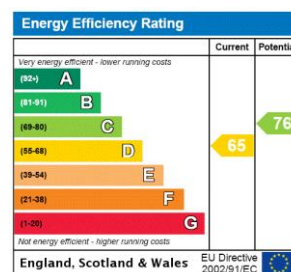
London, SW1X

- Private garden
- Large eat in kitchen
- Prime Location
- Built in storage
- Bright
- Garage



Cadogan Lane is a quiet and charming street which is tucked away behind Cadogan Place and Sloane Street. Close to Hyde Park, the property is ideally situated for all the restaurants, bars and world class shops that Knightsbridge and Sloane Street have to offer, including Harrods and Harvey Nichols.

Minimum Term: 12 months
Deposit Required: £13,500.00
Local Authority: Royal Borough of Kensington & Chelsea
Council Tax Band: H
EPC Rating: D
Unfurnished



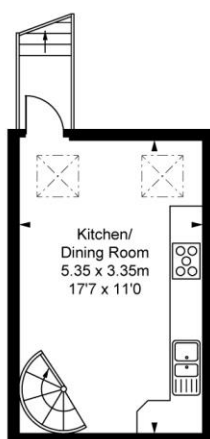
Chestertons Knightsbridge & Belgravia Lettings

31 Lowndes Street
 London
 SW1X 9HX
lettings.knightsbridge@chestertons.com
 02072353530
chestertons.co.uk

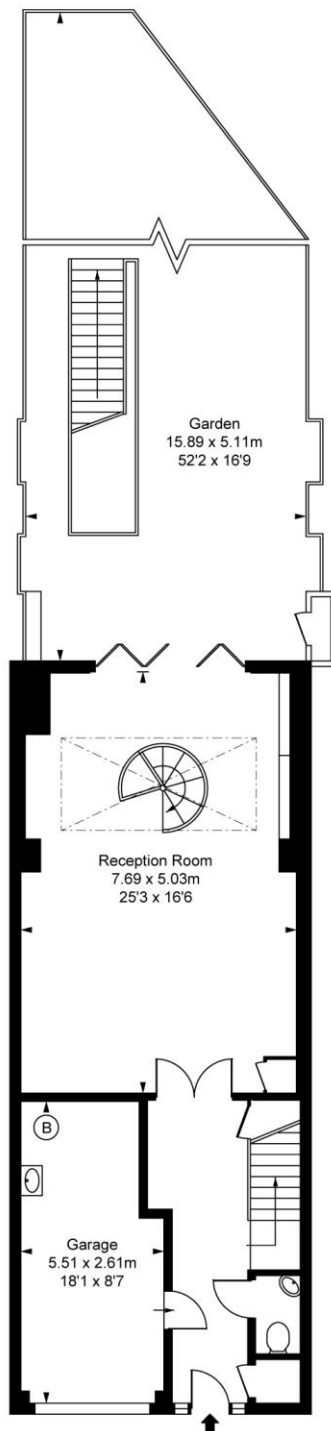
Additional tenant charges apply (fees apply to non-AST tenancies only)
 Tenancy Agreement Fee: £300
 References per Tenant/Guarantor: £60
 Inventory check (approx. £100 – £250 inc. VAT)
chestertons.co.uk/property-to-rent/applicable-fees

Cadogan Lane, SW1X
Approximate Gross Internal Area
183.50 sq m / 1,975 sq ft

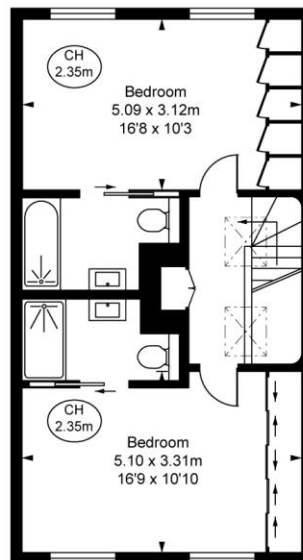
(CH = Ceiling Heights)
(Including Garage)



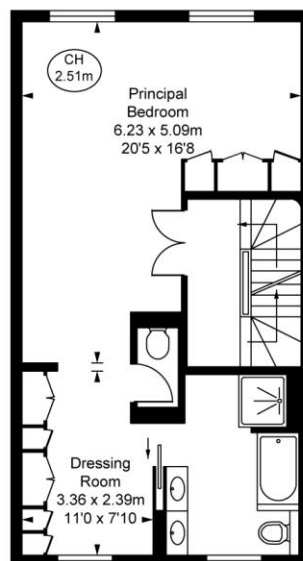
Lower Ground Floor
Approximate Gross Internal Area
17.98 sq m / 194 sq ft



Ground Floor
Approximate Gross Internal Area
66.27 sq m / 713 sq ft



Second Floor
Approximate Gross Internal Area
49.67 sq m / 535 sq ft



First Floor
Approximate Gross Internal Area
49.58 sq m / 534 sq ft

This plan is not to scale. It is for guidance and not for valuation purposes.
All measurements and areas are approximate only, and have been prepared in accordance with the current edition of the RICS Code of Measuring Practice.
© Fullam Performance

