



Belgrave Mews South

Belgravia, SW1X

£14,000 per month
(£3,230.77 per week)

An exceptionally stylish, newly refurbished two bedroom mews house, quietly located in this attractive, cobbled mews in one of the most desirable parts of Belgravia.

CHESTERTONS



Belgrave Mews South

Belgravia, SW1X

- Two bedroom mews house
- Impressive reception room with wood flooring
- Balcony
- Quiet, no through road
- Prime Belgravia

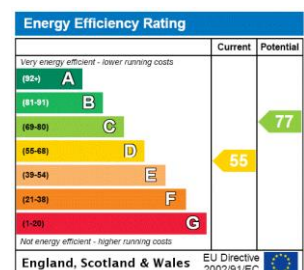


An exceptionally stylish, recently refurbished two bedroom mews house, quietly located in this attractive, cobbled mews in one of the most desirable parts of Belgravia.

The house has been redesigned to create a wonderful double-width reception room, separate kitchen and guest W/C on the ground floor. The first floor comprises two double bedrooms with wonderful vaulted ceilings, both with en-suite bathrooms and bespoke built in wardrobes.

The house is quietly located towards the end of Belgrave Mews South, a peaceful, cobbled mews with no through access situated

Minimum Term: 1 months
Deposit Required: £19,384.62
Local Authority:
Council Tax Band: G
EPC Rating: D
Furnished



Chestertons Knightsbridge & Belgravia Lettings

31 Lowndes Street
 London
 SW1X 9HX
knightsbridglettingsusers@chestertons.co.uk
 02072353530
chestertons.co.uk

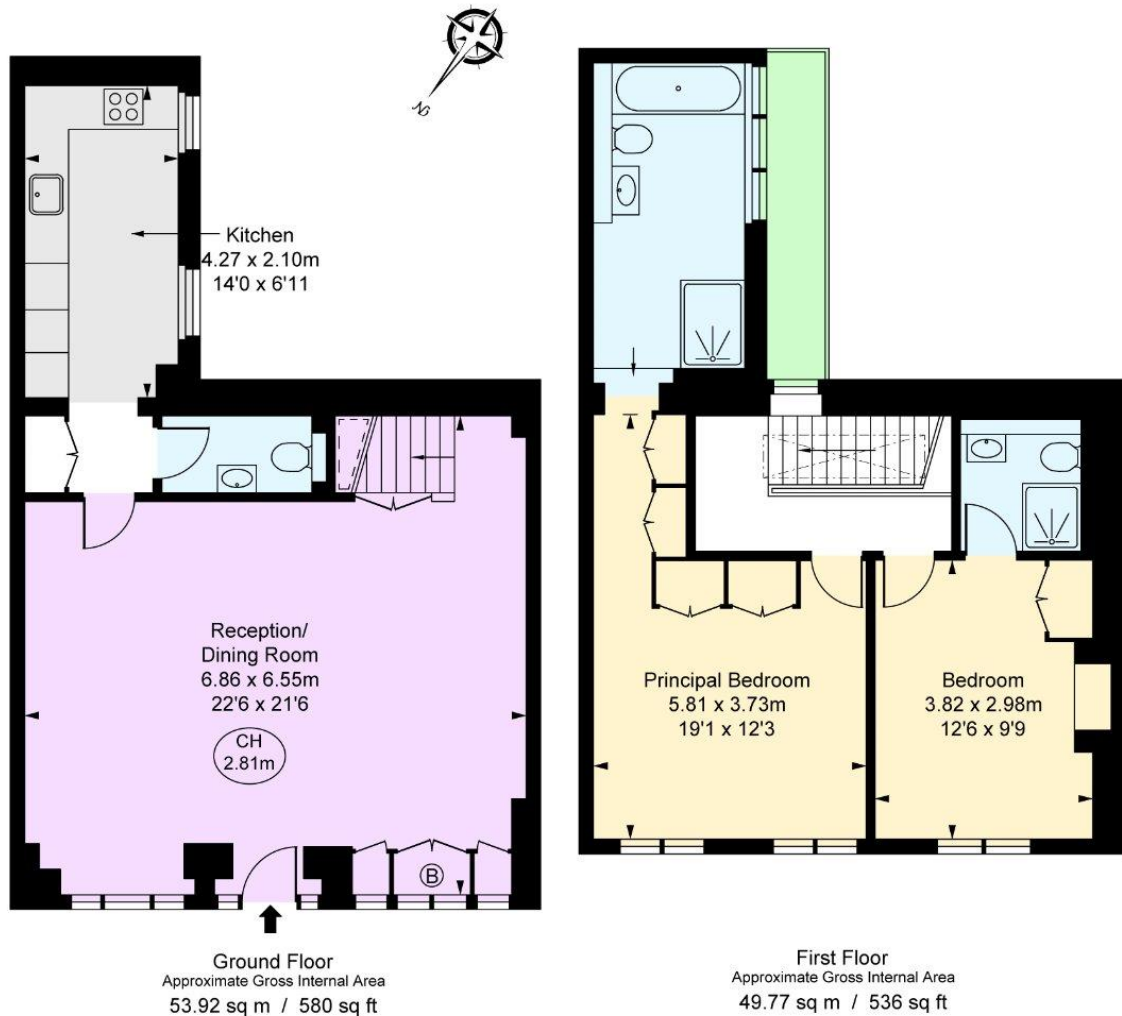
Additional tenant charges apply (fees apply to non-AST tenancies only)
 Tenancy Agreement Fee: £300
 References per Tenant/Guarantor: £60
 Inventory check (approx. £100 – £250 inc. VAT)
chestertons.co.uk/property-to-rent/applicable-fees

Belgrave Mews South, SW1X

Approximate Gross Internal Area
103.69 sq m / 1,116 sq ft

(Including restricted height
under 1.5m [= = = =])

(CH = Ceiling Heights)



This plan is not to scale. It is for guidance and not for valuation purposes.
All measurements and areas are approximate only, and have been prepared in accordance with the current edition of the RICS Code of Measuring Practice.
© Fulham Performance

