



Pont Street
London, SW1X

CHESTERTONS





A bright and spacious 904 sq ft duplex in an elegant red-brick period building between Sloane Street and Brompton Road, featuring modern décor, wood flooring, and an open-plan kitchen/reception with double bedroom and contemporary bathroom.

- Wood flooring
- Duplex apartment
- Located moments from Sloane Street and Harrods
- Spacious reception with high ceiling and large bay window

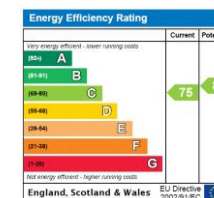
£3,700 pcm

Additional tenant charges apply (fees apply to non-AST tenancies only)

Tenancy Agreement Fee: £300

References per Tenant/Guarantor: £60

Inventory check (approx. £100 – £250 inc. VAT)
[chestertons.co.uk/property-to-rent/applicable-fees](https://www.chestertons.co.uk/property-to-rent/applicable-fees)



Minimum Term: 12 months
Deposit Required: £4,269.23
Local Authority: Royal Borough of Kensington & Chelsea
Council Tax Band: G
EPC Rating: C
Part Furnished

Chestertons Knightsbridge & Belgravia Lettings

31 Lowndes Street
 London
 SW1X 9HX

knightsbridgelettingsusers@chestertons.co.uk

02072353530

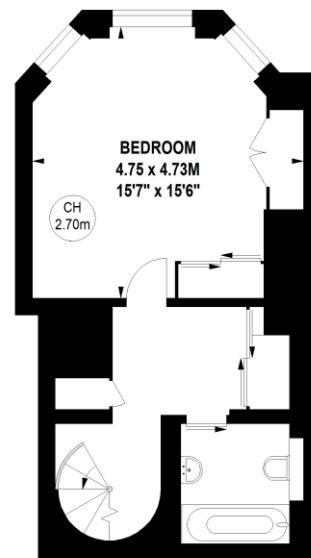
[chestertons.co.uk](https://www.chestertons.co.uk)

Pont Street, SW1X

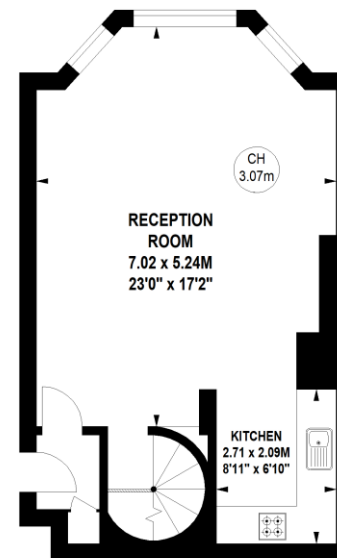
Approximate gross internal area

83.98 sq m / 904 sq ft

Key :
CH - Ceiling Height



Lower Ground Floor



Raised Ground Floor

Not to scale, for guidance only and must not be relied upon as a statement of fact.
All measurements and areas are approximate only

