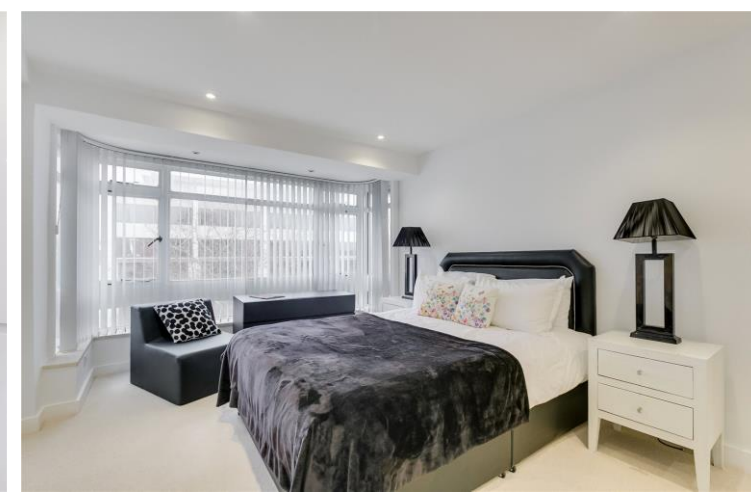




Hereford House  
Ovington Gardens, SW3







Contemporary 5th floor apartment of circa 776 sq ft with lift access in a popular modern development on the corner of Ovington Gardens and Brompton Street.

The property is bright and spacious and benefits from wood flooring and stunning viewings across the city. The accommodation comprises of a stylish open plan reception and fully fitted kitchen, private balcony, two double bedrooms and two modern bathrooms.

Located moments from Harrods and just a short walk from Knightsbridge station and Hyde Park.

- Stunning 5th floor apartment
- Lift access
- Two double bedrooms
- Two bathrooms
- Wood flooring
- Furnished

**£4,311.67 pcm**

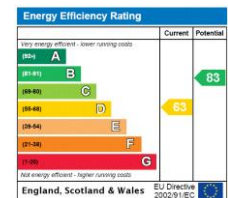
Additional tenant charges apply (fees apply to non-AST tenancies only)

Tenancy Agreement Fee: £300

References per Tenant/Guarantor: £60

Inventory check (approx. £100 – £250 inc. VAT)

[chestertons.co.uk/property-to-rent/applicable-fees](http://chestertons.co.uk/property-to-rent/applicable-fees)



**Minimum Term:** 12 months  
**Deposit Required:** Five weeks  
**Local Authority:** Kensington and Chelsea  
**Council Tax Band:** G  
**EPC Rating:** D  
**Furnished**

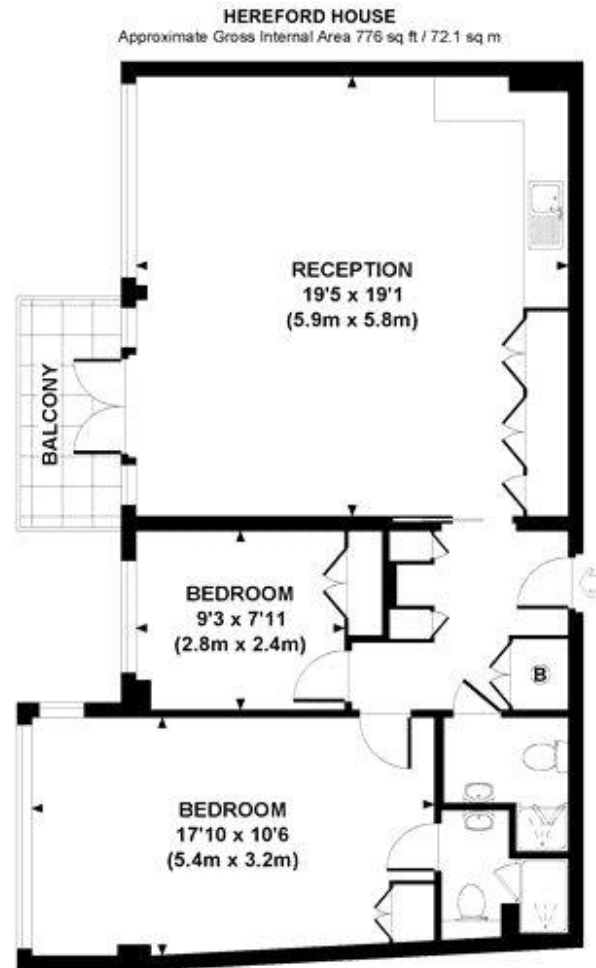
*Chestertons Knightsbridge & Belgravia Lettings*

31 Lowndes Street  
 London  
 SW1X 9HX

[knightsbridgelettingsusers@chestertons.co.uk](mailto:knightsbridgelettingsusers@chestertons.co.uk)

02072353530

[chestertons.co.uk](http://chestertons.co.uk)



**FIFTH FLOOR**  
**GROSS INTERNAL**  
**FLOOR AREA 776 SQ FT**

Although every attempt has been made to ensure accuracy, all measurements are approximate.  
The floor plan is for illustrative purposes only and not to scale. Measured in accordance to RICS standards.  
DE.PHOTOGRAPHY.NET

Chesterton UK Services Limited trading as Chestertons for themselves and for the vendor of this property whose agents they are, give notice that (i) these particulars do not constitute any part of an offer or contract, (ii) all statements contained within these particulars are made without responsibility on the part of Chestertons or the vendor, (iii) whilst made in good faith, none of the statements contained within these particulars are to be relied upon as a statement or representation of fact, (iv) any intending purchasers must satisfy themselves by inspection or otherwise as to the correctness of each of the statements contained within these particulars, (v) the vendor does not make or give either Chestertons or any person in their employment any authority to make or give representation or warranty whatsoever in relation to this property. Wide angle lenses may be used. ©Copyright Chestertons | Chesterton Global Ltd | Registered Office 40 Connaught Street, Hyde Park, London W2 2AB Registered Company Number 05334580.

