



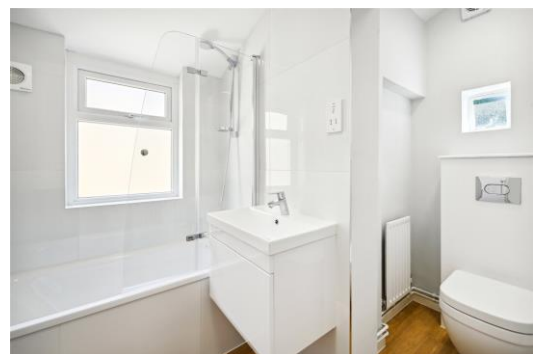
# St Barnabas Street

Belgravia, SW1W

£4,116.67 per month  
(£950 per week)

Beautifully presented townhouse arranged over two floors, with features that include a private garden and wood flooring. Conveniently located for all amenities of Orange Square/Pimlico Road and Sloane Square. Rent inclusive of utilities.

**CHESTERTONS**



# St Barnabas Street

## Belgravia, SW1W

- Rent inclusive of utilities
- Wood flooring
- Private garden
- Belgravia townhouse



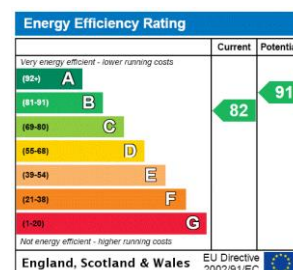


Beautifully presented townhouse in Belgravia arranged over two floors, with features that include a private garden and wood flooring.

The property is located conveniently for all amenities of Orange Square/Pimlico Road and Sloane Square. Rent inclusive of utilities.

The accommodation includes a spacious reception/dining room, fully fitted kitchen, two double bedrooms, bathroom suite, and private rear garden.

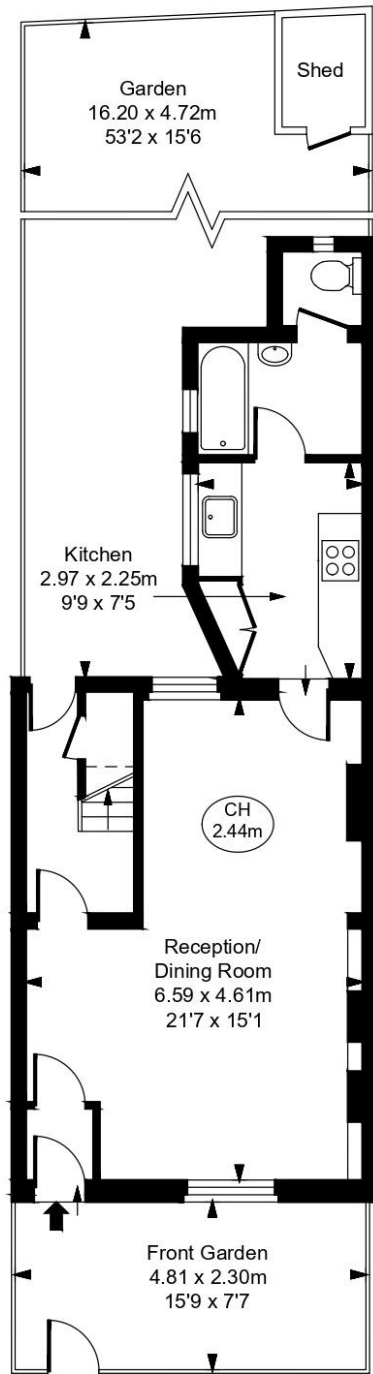
**Minimum Term:** 12 months  
**Deposit Required:** £4,750.00  
**Local Authority:** City Of Westminster  
**Council Tax Band:** G  
**EPC Rating:** B  
**Unfurnished**



### *Chestertons Knightsbridge & Belgravia Lettings*

31 Lowndes Street  
 London  
 SW1X 9HX  
[knightsbridgelettingsusers@chestertons.co.uk](mailto:knightsbridgelettingsusers@chestertons.co.uk)  
 02072353530  
[chestertons.co.uk](http://chestertons.co.uk)

Additional tenant charges apply (fees apply to non-AST tenancies only)  
 Tenancy Agreement Fee: £300  
 References per Tenant/Guarantor: £60  
 Inventory check (approx. £100 – £250 inc. VAT)  
[chestertons.co.uk/property-to-rent/applicable-fees](http://chestertons.co.uk/property-to-rent/applicable-fees)



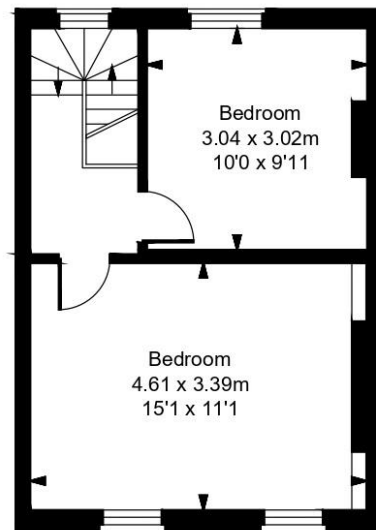
**Ground Floor**  
Approximate Gross Internal Area  
42.41 sq m / 457 sq ft

## St Barnabas Street, SW1W

Approximate Gross Internal Area  
72.92 sq m / 785 sq ft

( Including restricted height  
under 1.5m □ □ □ □ □ )

( CH = Ceiling Heights )



**First Floor**  
Approximate Gross Internal Area  
30.50 sq m / 328 sq ft

This plan is not to scale. It is for guidance and not for valuation purposes.  
All measurements and areas are approximate only, and have been prepared in accordance with the current edition of the RICS Code of Measuring Practice.  
© Fulham Performance

