



Egerton Crescent

London, SW3

£26,000 per month
(£6,000 per week)

Tucked away on one of London's most exclusive addresses, this striking Egerton Crescent home boasts five bedrooms over five floors with a private garden.

CHESTERTONS



Egerton Crescent

London, SW3

- Five Bedrooms
- Five Bathrooms
- End of Terrace
- Garden



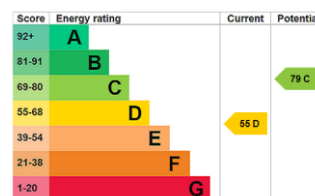
Tucked away on one of London's most exclusive addresses, this striking Egerton Crescent home provides period elegance arranged over five floors.

Inside, you'll find five bedrooms and five bathrooms, alongside three reception rooms, two kitchens, three guest WCs, a utility room, private garden, two terraces and access to communal gardens.

On the raised ground floor, the main kitchen and reception open onto a generous terrace, creating the perfect setting for entertaining. In addition there is a second reception room spanning the whole first floor. On the second and third floors there are four bedrooms including a principal suite.

The lower ground floor offers flexible space, ideal for guest or staff accommodation, with direct access from the street, a second kitchen and another reception room leading straight into the garden.

Minimum Term: 12 months
Deposit Required: Six weeks
Local Authority: Kensington and Chelsea
Council Tax Band: H
EPC Rating: D
Unfurnished

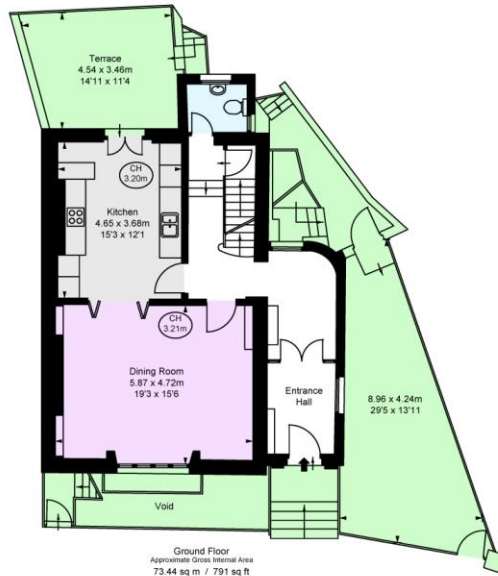
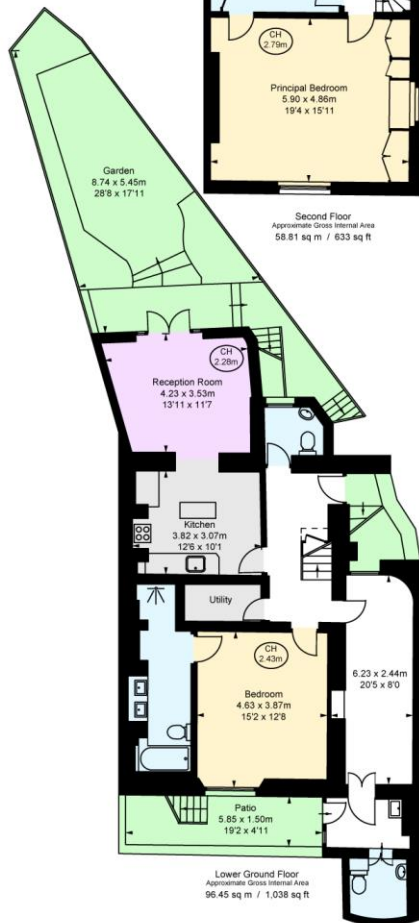
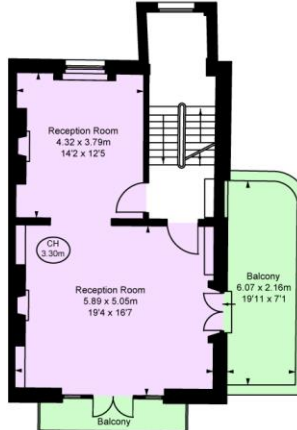
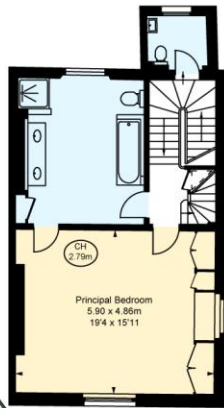
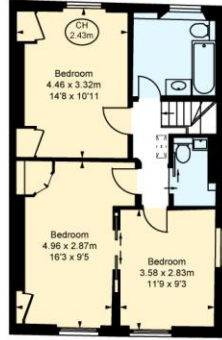


Chestertons Knightsbridge & Belgravia Lettings

31 Lowndes Street
 London
 SW1X 9HX
knightsbridgelettingsusers@chestertons.co.uk
 02072353530
chestertons.co.uk

Additional tenant charges apply (fees apply to non-AST tenancies only)
 Tenancy Agreement Fee: £300
 References per Tenant/Guarantor: £60
 Inventory check (approx. £100 – £250 inc. VAT)
chestertons.co.uk/property-to-rent/applicable-fees

Egerton Crescent, SW3
 Approximate Gross Internal Area
343.83 sq m / 3,701 sq ft
 (Including restricted height
 under 1.5m [= = =])
 (CH = Ceiling Heights)



This plan is not to scale. It is for guidance and not for valuation purposes.
 All measurements and areas are approximate only, and have been prepared in accordance with the current edition of the RICS Code of Measuring Practice.
 © Cheyenne Properties

Chesterton UK Services Limited trading as Chestertons for themselves and for the vendor of this property whose agents they are, give notice that (i) these particulars do not constitute any part of an offer or contract, (ii) all statements contained within these particulars are made without responsibility on the part of Chestertons or the vendor, (iii) whilst made in good faith, none of the statements contained within these particulars are to be relied upon as a statement or representation of fact, (iv) any intending purchasers must satisfy themselves by inspection or otherwise as to the correctness of each of the statements contained within these particulars, (v) the vendor does not make or give either Chestertons or any person in their employment any authority to make or give representation or warranty whatsoever in relation to this property. Wide angle lenses may be used. ©Copyright Chestertons | Chesterton Global Ltd | Registered Office 40 Connaught Street, Hyde Park, London W2 2AB Registered Company Number 05334580.



This paper is
 100% recyclable