



# Cadogan Place

London, SW1X

£7,583.33 per month  
(£1,750 per week)

Beautifully presented apartment located on Cadogan Place, overlooking the garden square. The accommodation comprises of a separate kitchen with modern appliances, spacious reception and separate dining room, three double bedrooms and two bathrooms.



# Cadogan Place

London, SW1X

- Three double bedrooms
- Two bathrooms
- Split level
- Two large receptions
- Wood flooring
- Cadogan Place address

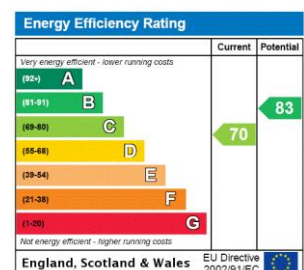


A beautifully presented contemporary apartment located on Cadogan Place, overlooking the garden square.

The accommodation comprises of a stunning separate kitchen with modern appliances, spacious reception and separate dining room, three double bedrooms with built-in storage and two bathrooms one of which is en-suite.

Cadogan Place is located just a few minutes' walk from Hyde Park. Also in close walking distance are both Knightsbridge and Sloane Street tube stations and the popular shopping experience offered on Brompton Road and Harrods.

**Minimum Term:** 12 months  
**Deposit Required:** £10,500.00  
**Local Authority:** Kensington and Chelsea  
**Council Tax Band:** H  
**EPC Rating:** C  
**Unfurnished**



### *Chestertons Knightsbridge & Belgravia Lettings*

31 Lowndes Street  
 London  
 SW1X 9HX  
[knightsbridglettingsusers@chestertons.co.uk](mailto:knightsbridglettingsusers@chestertons.co.uk)  
 02072353530  
[chestertons.co.uk](http://chestertons.co.uk)

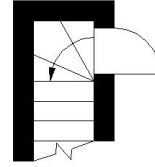
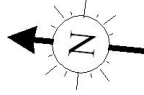
Additional tenant charges apply (fees apply to non-AST tenancies only)  
 Tenancy Agreement Fee: £300  
 References per Tenant/Guarantor: £60  
 Inventory check (approx. £100 – £250 inc. VAT)  
[chestertons.co.uk/property-to-rent/applicable-fees](http://chestertons.co.uk/property-to-rent/applicable-fees)

# Cadogan Place, SW1X

Approximate gross internal area

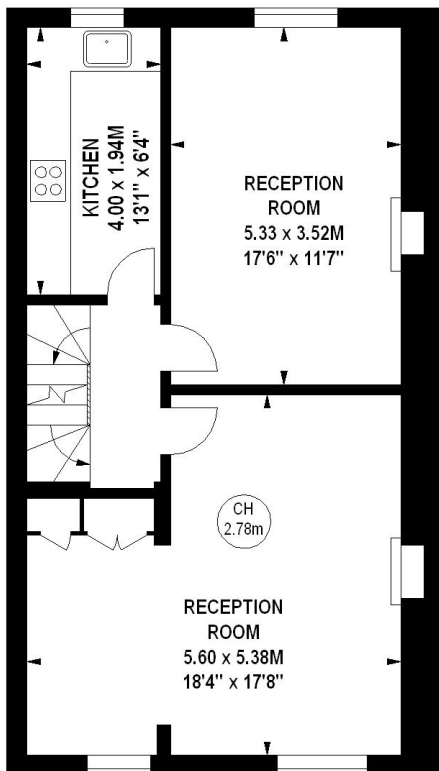
124.39 sq m / 1339 sq ft

Key :  
CH - Ceiling Height



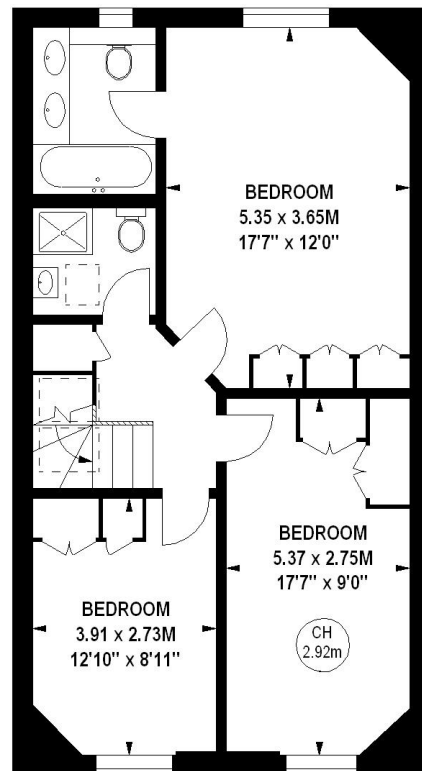
## Second Floor Entrance

19 sq ft



## Third Floor

657 sq ft



## Fourth Floor

663 sq ft

The floor plan is not to scale and measurements and areas shown are approximate and therefore should be used for illustrative purposes only.

The plan has been prepared in accordance with the RICS code of Measuring Practice and whilst we have confidence in the information produced, it must not be relied on.

If there is any aspect of particular importance, you should carry out or commission your own inspection of the property.

Copyright of FeaturePRO.

