



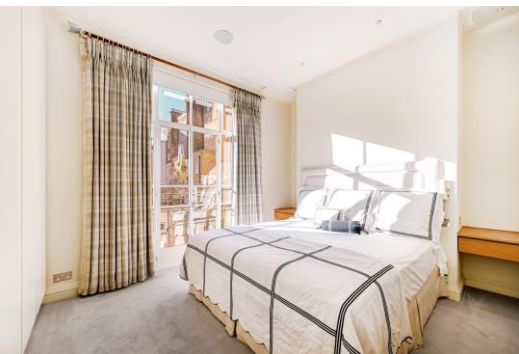
Eaton Square

London, SW1W

£6,000 per month
(£1,384.62 per week)

An exceptionally bright period apartment with a large balcony and high ceilings. Located on the 1st floor of an impressive white stucco fronted conversion with lift, caretaker and access to London's most prestigious garden square.

CHESTERTONS



Eaton Square

London, SW1W

- Porter
- Lift
- Large balcony
- Built in storage
- High ceiling
- Communal garden access

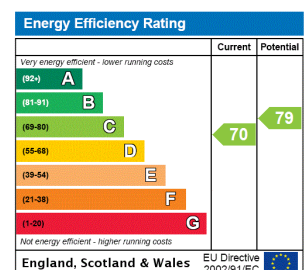


An exceptionally bright period apartment with a large balcony and high ceilings. Located on the 1st floor of an impressive white stucco fronted conversion with lift, caretaker and access to London's most prestigious garden square.

The accommodation includes two double bedrooms, two bathrooms, separate kitchen and a spacious reception proving direct access to the private balcony.

One of the most prestigious addresses in London, Eaton Square is conveniently located in close proximity to Sloane Square and Victoria.

Minimum Term: 12 months
Deposit Required: £8,307.69
Local Authority: Westminster
Council Tax Band: G
EPC Rating: C
Furnished

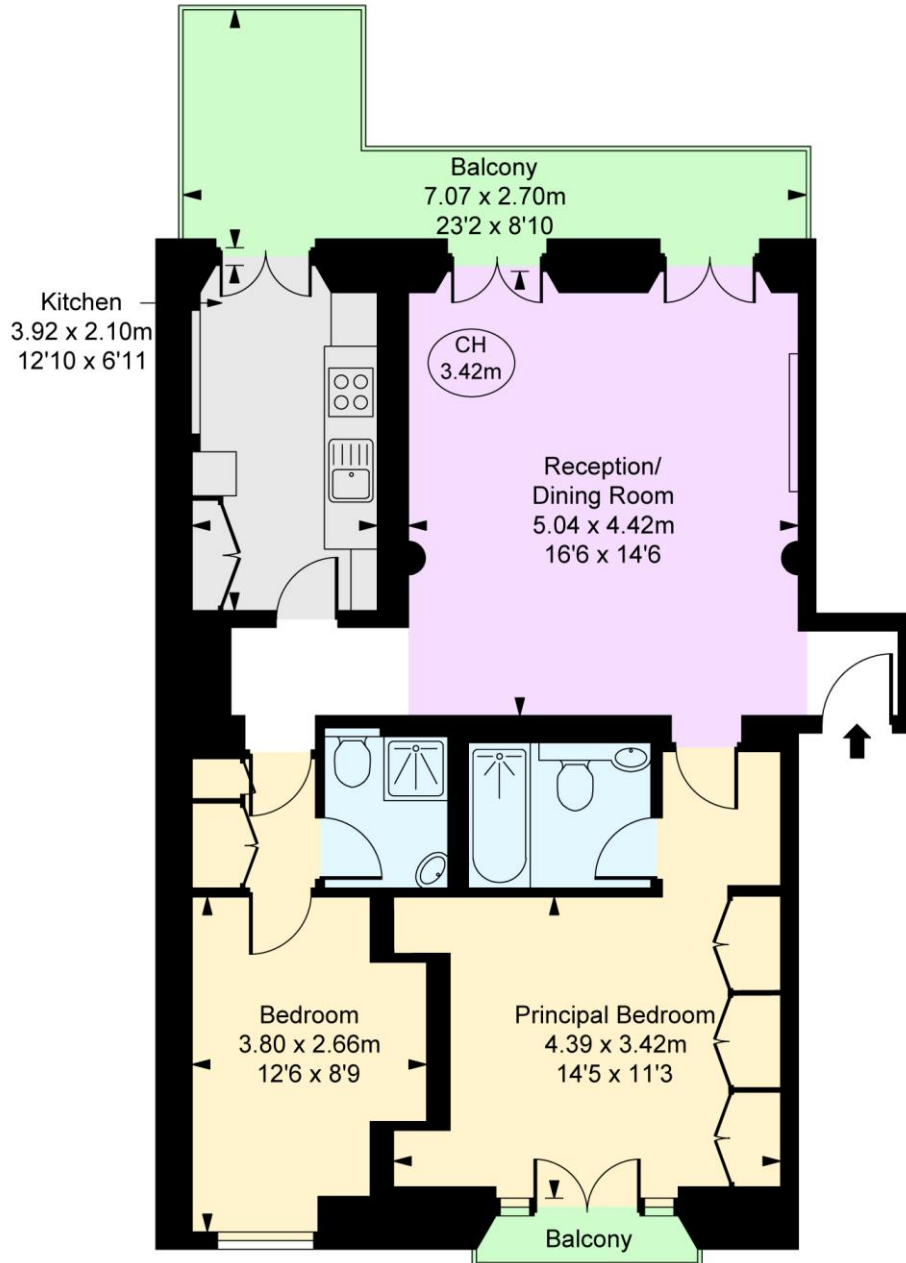


Chestertons Knightsbridge & Belgravia Lettings

31 Lowndes Street
 London
 SW1X 9HX
knightsbridglettingsusers@chestertons.co.uk
 02072353530
chestertons.co.uk

Additional tenant charges apply (fees apply to non-AST tenancies only)
 Tenancy Agreement Fee: £300
 References per Tenant/Guarantor: £60
 Inventory check (approx. £100 – £250 inc. VAT)
chestertons.co.uk/property-to-rent/applicable-fees

Eaton Square, SW1W
Approximate Gross Internal Area
71.14 sq m / 766 sq ft
(CH = Ceiling Heights)



First Floor

This plan is not to scale. It is for guidance and not for valuation purposes.
All measurements and areas are approximate only, and have been prepared in accordance with the current edition of the RICS Code of Measuring Practice.
© Fulham Performance

