



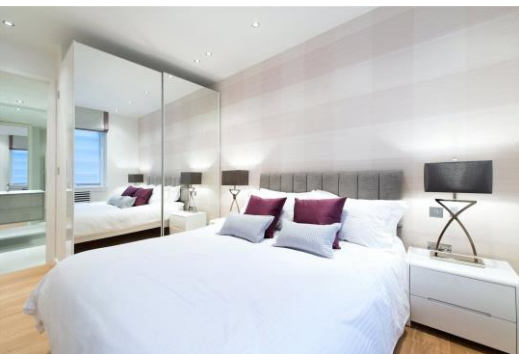
Lowndes Square

London, SW1X

£4,766.67 per month
(£1,100.00 per week)

Beautifully presented ground floor apartment of circa 691 sq. ft. Located moments from Sloane Street and Hyde Park in a much sought-after development with 24 hour porter, overlooking a popular garden square.

CHESTERTONS



Lowndes Square

London, SW1X

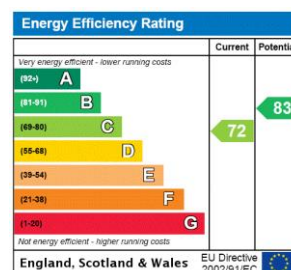
- Two double bedrooms
- Wood flooring
- Overlooking a private garden square
- Open plan kitchen/reception
- Two bathrooms
- Moments from Hyde Park



Beautifully presented ground floor apartment of circa 691 sq. ft. Located moments from Sloane Street and Hyde Park in a much sought-after development with 24 hour porter, overlooking a popular garden square.

The property has been finished to an excellent standard and benefits from wood flooring throughout, open plan kitchen/reception, two double bedrooms and two bathrooms.

Minimum Term: 12 months
Deposit Required: £6,600.00
Local Authority: Kensington and Chelsea
Council Tax Band: G
EPC Rating: C
Furnished, Part Furnished, Unfurnished



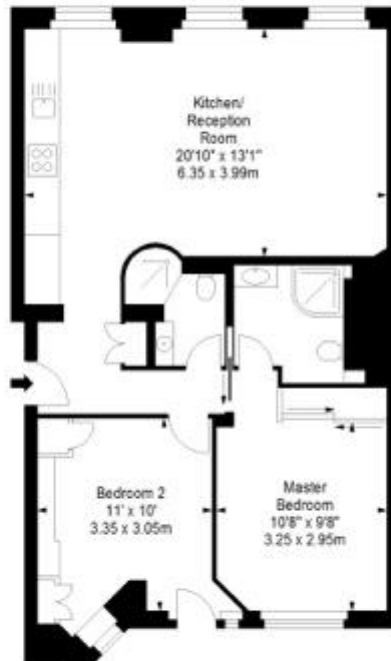
Chestertons Knightsbridge & Belgravia Lettings

31 Lowndes Street
 London
 SW1X 9HX
knightsbridglettingsusers@chestertons.co.uk
 02072353530
chestertons.co.uk

Additional tenant charges apply (fees apply to non-AST tenancies only)
 Tenancy Agreement Fee: £300
 References per Tenant/Guarantor: £60
 Inventory check (approx. £100 – £250 inc. VAT)
chestertons.co.uk/property-to-rent/applicable-fees

LOWNDES SQUARE, SW1

Approx. Gross Internal Area *
691 Ft² - 64.20 M²



Ground Floor

Illustration For Identification Purposes Only. Not to Scale
* As Defined by BS1 - Code of Measuring Practice
Copyright © BluePrint Properties Ltd. 2013
info@blueprintproperties.co.uk

