



Sloane Square

London, SW1W

£3,878.33 per month
(£895 per week)

Fabulous 2nd floor apartment of circa 707 sq ft, with lift access, perfectly located on the corner of Sloane Square, moments from the tube.

CHESTERTONS



Sloane Square

London, SW1W

- 2nd floor with lift access
- Modern high quality finish throughout
- Moments from the tube
- Fantastic location on Sloane Square, opposite Kings Road

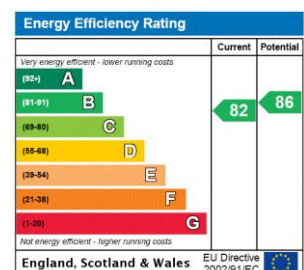


A fabulous 2nd floor apartment with lift access, perfectly located on the corner of Sloane Square, moments from the tube.

The accommodation is circa 707 sq ft and includes a double bedroom with built-in storage, modern bathroom suite, an impressive reception, and separate kitchen.

Sloane Square is a prestigious location on the border of Chelsea, Knightsbridge and Belgravia. Located within easy access to a host of restaurants and shops available on Sloane Street and the Kings Road.

Minimum Term: 12 months
Deposit Required: £4,475.00
Local Authority: Royal Borough of Kensington & Chelsea
Council Tax Band: G
EPC Rating: C
Unfurnished



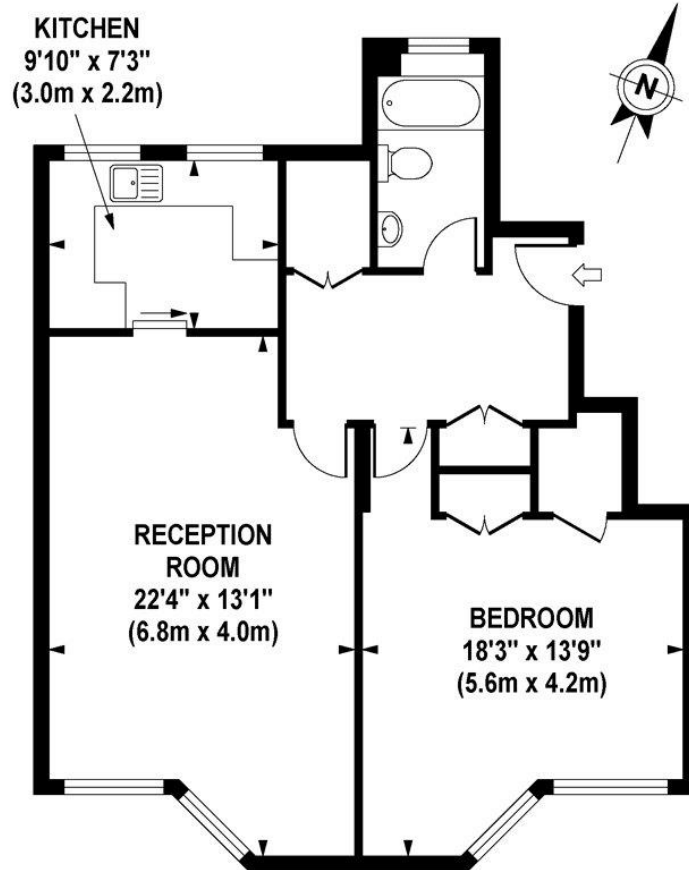
Chestertons Knightsbridge & Belgravia Lettings

31 Lowndes Street
 London
 SW1X 9HX
knightsbridglettingsusers@chestertons.co.uk
 02072353530
chestertons.co.uk

Additional tenant charges apply (fees apply to non-AST tenancies only)
 Tenancy Agreement Fee: £300
 References per Tenant/Guarantor: £60
 Inventory check (approx. £100 – £250 inc. VAT)
chestertons.co.uk/property-to-rent/applicable-fees

SLOANE SQUARE

Approximate Gross Internal Area 707 sq ft / 65.7 sq m



**SECOND FLOOR
GROSS INTERNAL
FLOOR AREA 707 SQ FT**

Although every attempt has been made to ensure accuracy, all measurements are approximate.
The floor plan's for illustrative purposes only and not to scale. Measured in accordance to RICS standards.

DE-PHOTOGRAPHY.NET

