



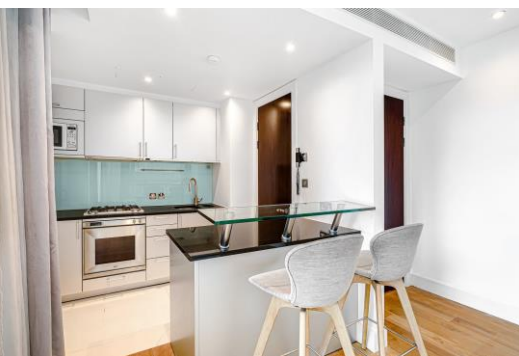
# Knightsbridge

London, SW7

£8,250 per month  
(£1,903.85 per week)

Stunning lateral apartment with two private balconies comprising part of a much sought-after contemporary development. The development features 24-hour pool, spa and gym facilities.

CHESTERTONS



# Knightsbridge

## London, SW7

- 24-hour concierge
- Pool, spa and gym facilities
- Wood flooring
- Two private balconies
- Located opposite Hyde Park





This newly decorated stunning lateral apartment comprising part of a much sought-after contemporary development located opposite Hyde Park in the heart of Knightsbridge. The development features 24 hour concierge, pool, spa and gym facilities.

The accommodation is circa 973 sq. ft. and consists of a spacious open plan kitchen/reception with wood flooring, breakfast bar and access to a private balcony. Additionally there are two double bedrooms, two bathrooms (one en-suite) and a second balcony.

**Minimum Term:** 12 months  
**Deposit Required:** £11,423.08  
**Local Authority:** City of Westminster  
**Council Tax Band:** G  
**EPC Rating:** B  
**Furnished**

Energy Efficiency Rating		
	Current	Potential
Very energy efficient - lower running costs		
(94-100) <b>A</b>		
(81-93) <b>B</b>	82	84
(69-80) <b>C</b>		
(55-68) <b>D</b>		
(39-54) <b>E</b>		
(21-38) <b>F</b>		
(1-20) <b>G</b>		
Not energy efficient - higher running costs		
England, Scotland & Wales EU Directive 2002/91/EC		

### *Chestertons Knightsbridge & Belgravia Lettings*

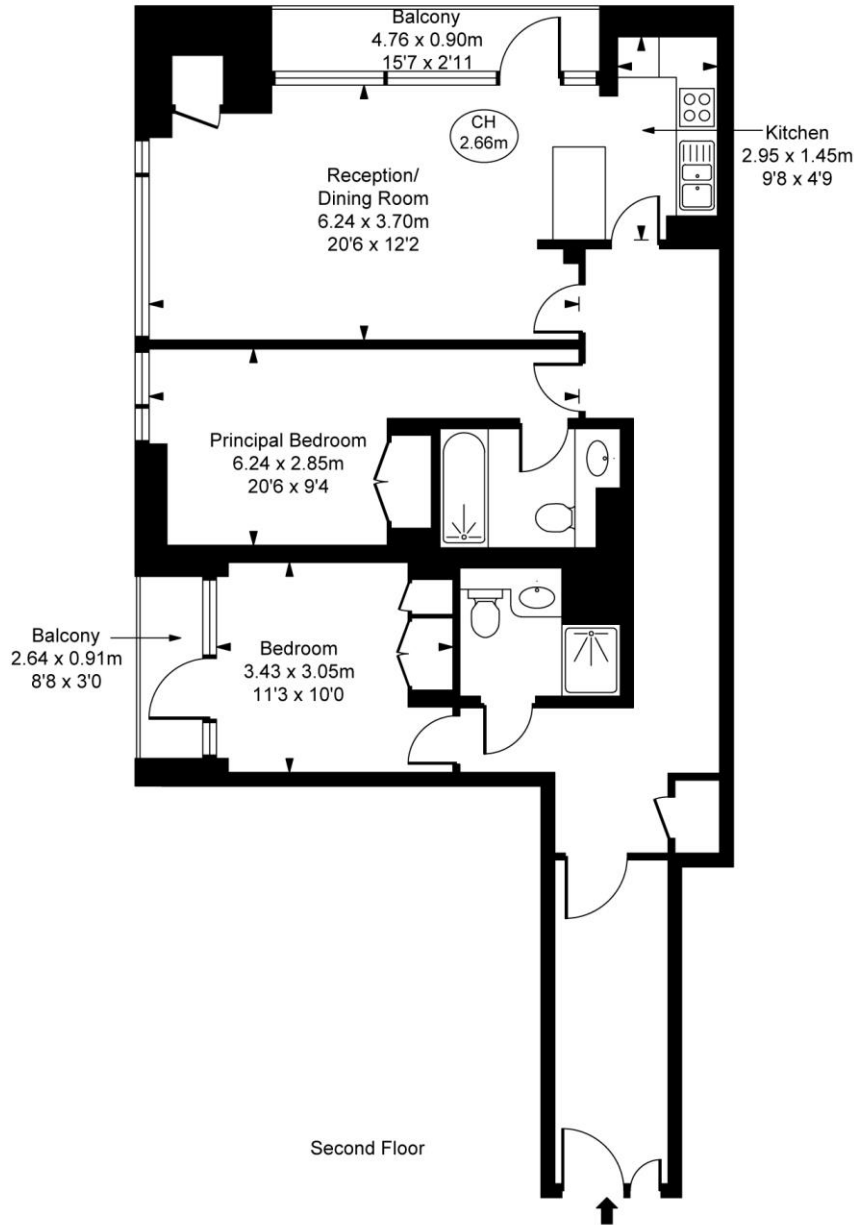
31 Lowndes Street  
 London  
 SW1X 9HX  
[knightsbridglettingsusers@chestertons.co.uk](mailto:knightsbridglettingsusers@chestertons.co.uk)  
 02072353530  
[chestertons.co.uk](http://chestertons.co.uk)

Additional tenant charges apply (fees apply to non-AST tenancies only)  
 Tenancy Agreement Fee: £300  
 References per Tenant/Guarantor: £60  
 Inventory check (approx. £100 – £250 inc. VAT)  
[chestertons.co.uk/property-to-rent/applicable-fees](http://chestertons.co.uk/property-to-rent/applicable-fees)

# The Knightsbridge, SW7

Approximate Gross Internal Area  
90.38 sq m / 973 sq ft

( CH = Ceiling Heights )



This plan is not to scale. It is for guidance and not for valuation purposes.  
All measurements and areas are approximate only, and have been prepared in accordance with the current edition of the RICS Code of Measuring Practice.  
© Fulham Performance

Chesterton UK Services Limited trading as Chestertons for themselves and for the vendor of this property whose agents they are, give notice that (i) these particulars do not constitute any part of an offer or contract, (ii) all statements contained within these particulars are made without responsibility on the part of Chestertons or the vendor, (iii) whilst made in good faith, none of the statements contained within these particulars are to be relied upon as a statement or representation of fact, (iv) any intending purchasers must satisfy themselves by inspection or otherwise as to the correctness of each of the statements contained within these particulars, (v) the vendor does not make or give either Chestertons or any person in their employment any authority to make or give representation or warranty whatsoever in relation to this property. Wide angle lenses may be used. ©Copyright Chestertons | Chesterton Global Ltd | Registered Office 40 Connaught Street, Hyde Park, London W2 2AB Registered Company Number 05334580.



This paper is  
100% recyclable