



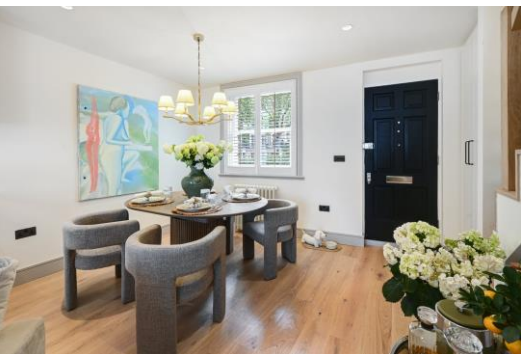
Rutland Gate

London, SW7

£8,666.67 per month
(£2,000 per week)

This stunning, newly refurbished two-bedroom, two-bathroom house is ideally located on the prestigious Rutland Gate and just a one-minute walk from beautiful Hyde Park. It offers a perfect blend of modern luxury and convenient city living.

CHESTERTONS



Rutland Gate

London, SW7

- New
- Two bedrooms
- Two bathrooms
- Private Terrace

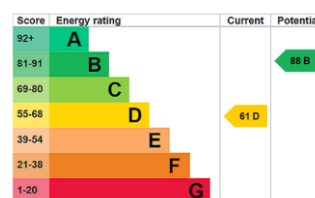


This stunning, newly refurbished two-bedroom, two-bathroom house is ideally located on the prestigious Rutland Gate and just a one-minute walk from beautiful Hyde Park. It offers a perfect blend of modern luxury and convenient city living. Finished to an exceptionally high standard, the property boasts cozy interiors with quality fixtures for comfort and style.

The spacious living areas are complemented by a thoughtfully designed kitchen, perfect for daily living and entertaining. Both bedrooms are generously sized, with the master featuring an ensuite bathroom. The property also includes a charming private patio, ideal for relaxation or alfresco dining.

This prime location ensures easy access to local amenities and transport links, making it a rare find for discerning tenants seeking quality and convenience.

Minimum Term: 12 months
Deposit Required: Six weeks
Local Authority: Kensington and Chelsea
Council Tax Band: H
EPC Rating: D



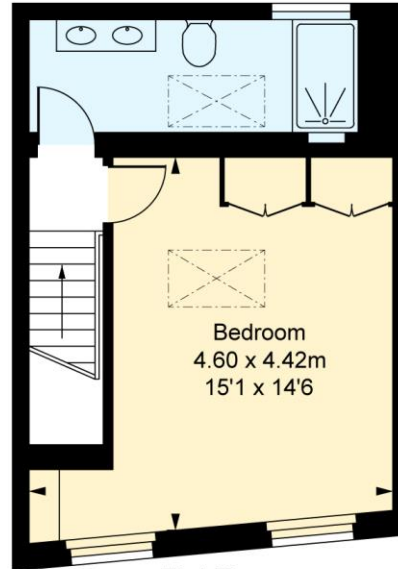
Chestertons Knightsbridge & Belgravia Lettings

31 Lowndes Street
 London
 SW1X 9HX
knightsbridglettingsusers@chestertons.co.uk
 02072353530
[chestertons.co.uk](https://www.chestertons.co.uk)

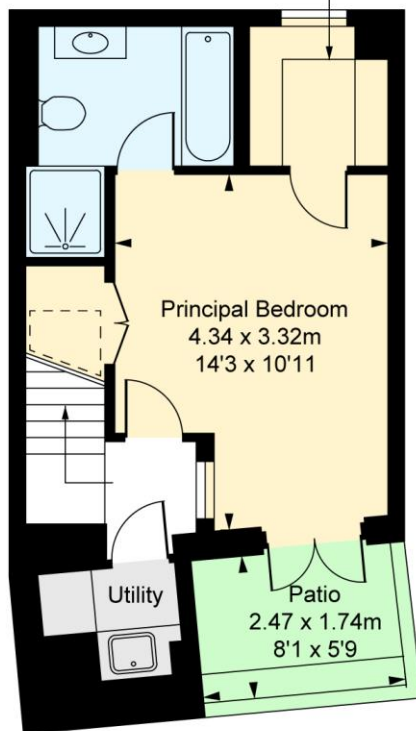
Additional tenant charges apply (fees apply to non-AST tenancies only)
 Tenancy Agreement Fee: £300
 References per Tenant/Guarantor: £60
 Inventory check (approx. £100 – £250 inc. VAT)
[chestertons.co.uk/property-to-rent/applicable-fees](https://www.chestertons.co.uk/property-to-rent/applicable-fees)

Rutland Gate, SW7
 Approximate Gross Internal Area
83.13 sq m / 895 sq ft

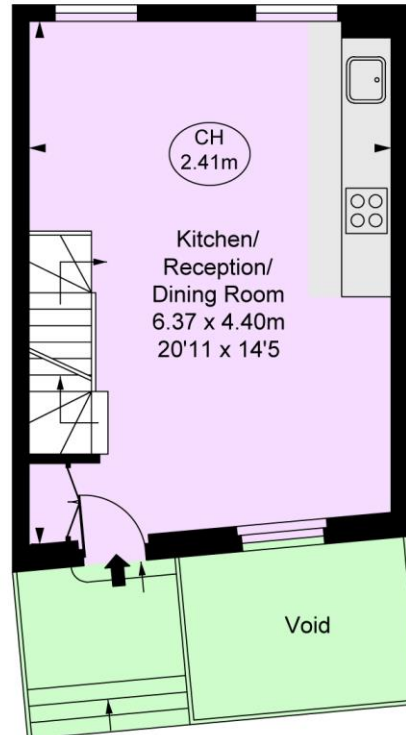
(Including restricted height
 under 1.5m [- - - - -])
 (CH = Ceiling Heights)



First Floor
 Approximate Gross Internal Area
26.57 sq m / 286 sq ft



Lower Ground Floor
 Approximate Gross Internal Area
29.32 sq m / 316 sq ft



Ground Floor
 Approximate Gross Internal Area
27.24 sq m / 293 sq ft

This plan is not to scale. It is for guidance and not for valuation purposes.
 All measurements and areas are approximate only, and have been prepared in accordance with the current edition of the RICS Code of Measuring Practice.
 © Fulham Performance