



Pont Street

London, SW1X

£10,400 per month
(£2,400 per week)

Exceptional duplex apartment of circa 1,127 sq ft, with lift access and porter. Situated in an impressive period red brick building, located between Sloane Street and the Brompton Road. Features include a terrace and herringbone wood flooring.

CHESTERTONS



Pont Street

London, SW1X

- Herringbone wood floors in the principle rooms
- Small private terrace
- Stunning double height ceilings
- Lift access
- Porter

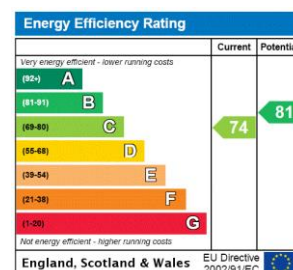


Exceptional first and second floor duplex apartment of circa 1,127 sq ft, with lift access and porter. Situated in an impressive period red brick building, perfectly located between Sloane Street and the Brompton Road.

This property benefits from an impressive reception with double a height ceiling and large windows, which flood the apartment with plenty of natural light and provide access to a small terrace.

The accommodation also includes a separate fully fitted kitchen, two double bedrooms, two modern bathrooms and herringbone wood floors in the principle rooms.

Minimum Term: 12 months
Deposit Required: £14,400.00
Local Authority: Kensington and Chelsea
Council Tax Band: G
EPC Rating: C
Furnished



Chestertons Knightsbridge & Belgravia Lettings

31 Lowndes Street
 London
 SW1X 9HX
knightsbridglettingsusers@chestertons.co.uk
 02072353530
chestertons.co.uk

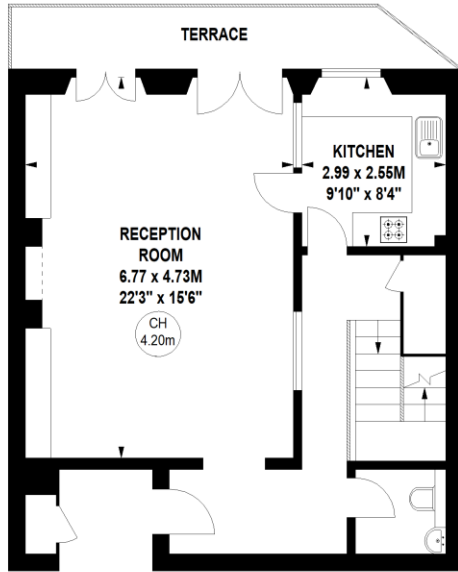
Additional tenant charges apply (fees apply to non-AST tenancies only)
 Tenancy Agreement Fee: £300
 References per Tenant/Guarantor: £60
 Inventory check (approx. £100 – £250 inc. VAT)
chestertons.co.uk/property-to-rent/applicable-fees

Pont Street, SW1

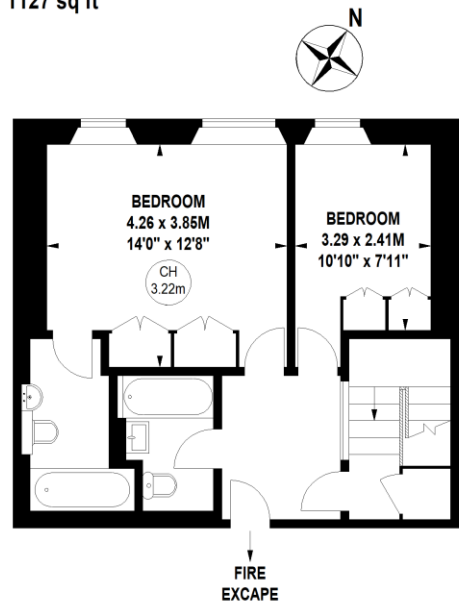
Approximate gross internal area

104.70 sq m / 1127 sq ft

Key :
CH - Ceiling Height



First Floor



Second Floor

Not to scale, for guidance only and must not be relied upon as a statement of fact.
All measurements and areas are approximate only

