



Chester Street
Belgravia, SW1X

CHESTERTONS





SHORT LET - Contemporary apartment of circa 1,400 square feet in a Georgian townhouse. The property benefits from lift access, on-site caretaker, large reception/dining room, separate modern kitchen, three double bedrooms and three bathrooms.

- SHORT LET
- Three bedrooms
- Three bathrooms
- Air cooling
- Lift
- Caretaker

£10,833.33 pcm

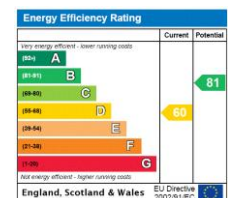
Additional tenant charges apply (fees apply to non-AST tenancies only)

Tenancy Agreement Fee: £300

References per Tenant/Guarantor: £60

Inventory check (approx. £100 – £250 inc. VAT)

chestertons.co.uk/property-to-rent/applicable-fees



Minimum Term: 1 months
Deposit Required: £10,000.00
Local Authority: Westminster City Council
Council Tax Band: H
EPC Rating: D
Furnished

Chestertons Knightsbridge & Belgravia Lettings

31 Lowndes Street

London

SW1X 9HX

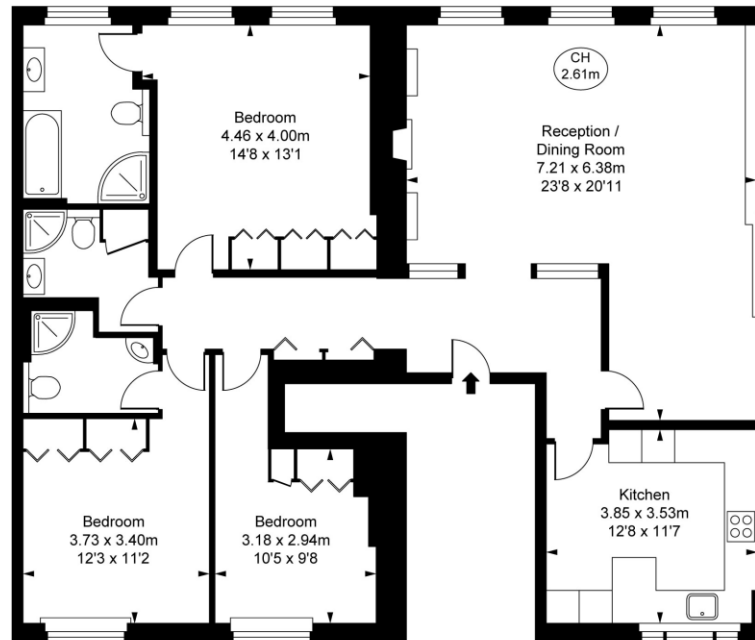
knightsbridge@chestertons.co.uk

02072353530

chestertons.co.uk

Chester Street, SW1X
Approximate Gross Internal Area
129.49 sq m / 1,394 sq ft

(CH = Ceiling Heights)



Second Floor

This plan is not to scale. It is for guidance and not for valuation purposes.
All measurements and areas are approximate only, and have been prepared in accordance with the current edition of the RICS Code of Measuring Practice.
© Fulham Performance

Chesterton Global Ltd trading as Chestertons for themselves and for the vendor of this property whose agents they are, give notice that (i) these particulars do not constitute any part of an offer or contract, (ii) all statements contained within these particulars are made without responsibility on the part of Chestertons or the vendor, (iii) whilst made in good faith, none of the statements contained within these particulars are to be relied upon as a statement or representation of fact, (iv) any intending purchasers must satisfy themselves by inspection or otherwise as to the correctness of each of the statements contained within these particulars, (v) the vendor does not make or give either Chestertons or any person in their employment any authority to make or give representation or warranty whatsoever in relation to this property. Wide angle lenses may be used. ©Copyright Chestertons | Chesterton Global Ltd | Registered Office 40 Connaught Street, Hyde Park, London W2 2AB Registered Company Number 05334580.



This paper is
100% recyclable