

# LOWNDES LODGE

---

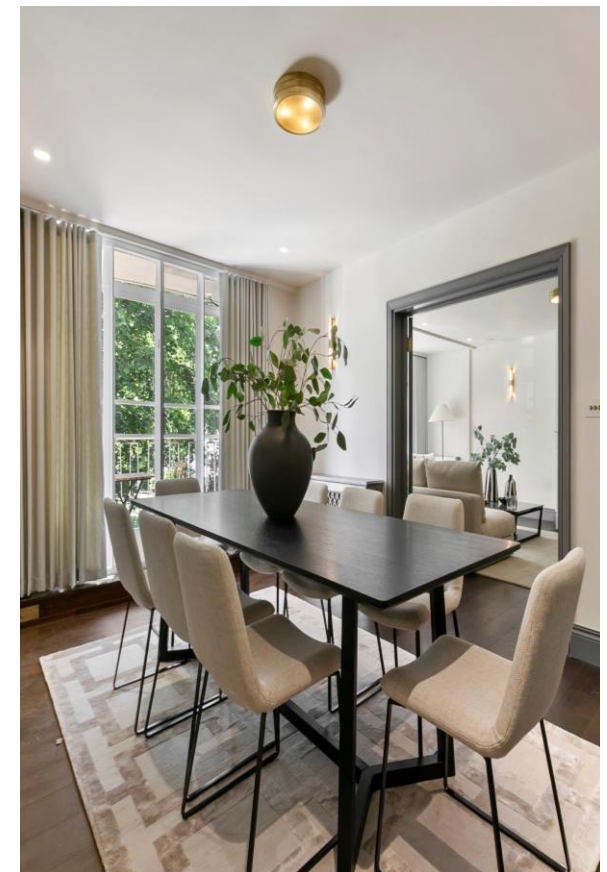
LONDON SW1X

CHESTERTONS

# LOWNDES LODGE

A spacious five-bedroom apartment with west facing views over the gardens of Cadogan Place. The flat is arranged over the first floor of this popular building. The property has been entirely refurbished to a high and modern standard.





## Specifications

- 5 bedrooms
- 5 bathrooms
- Unfurnished
- Lift
- 24/7 Porter
- Balcony
- Brand newly refurbished



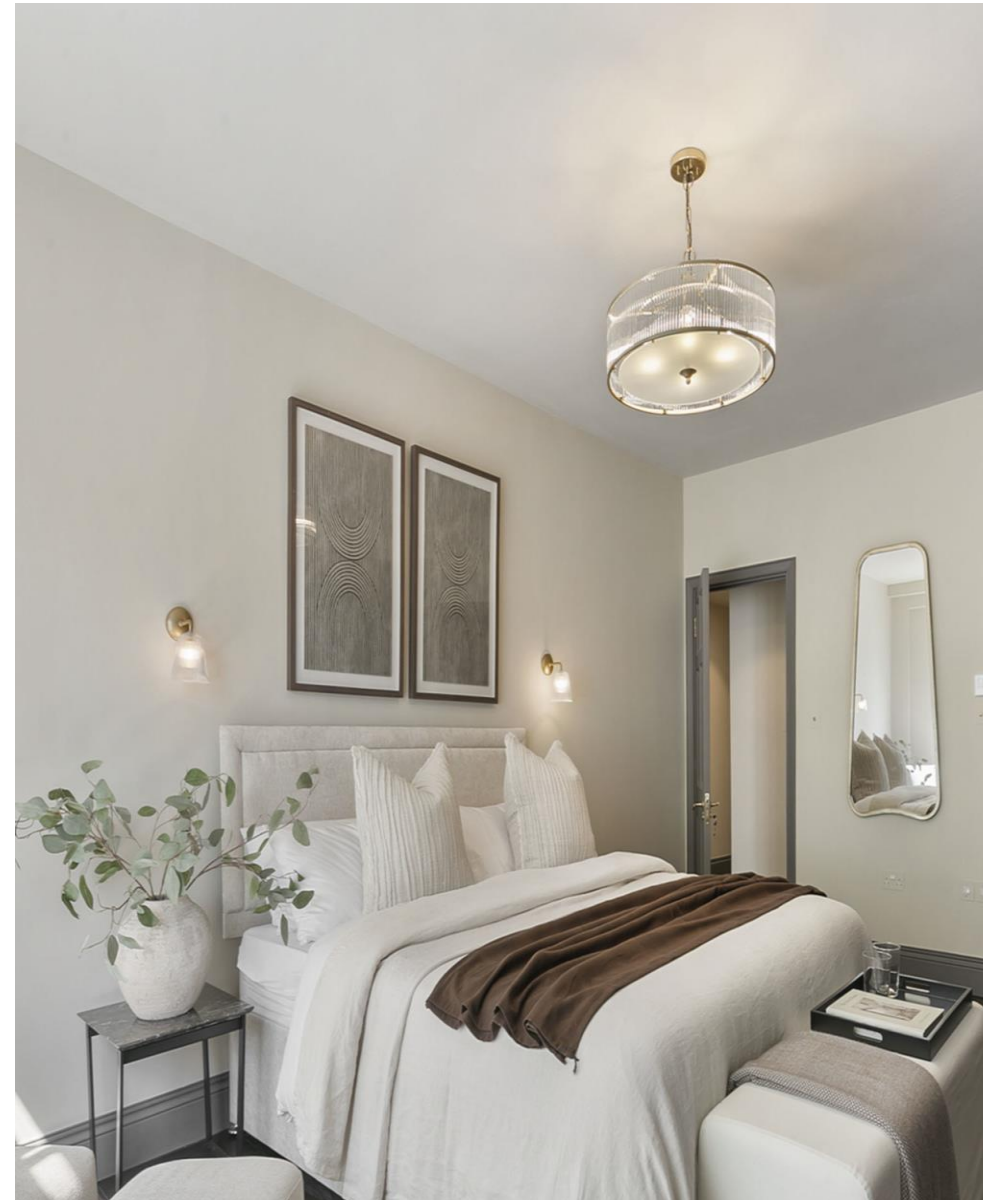








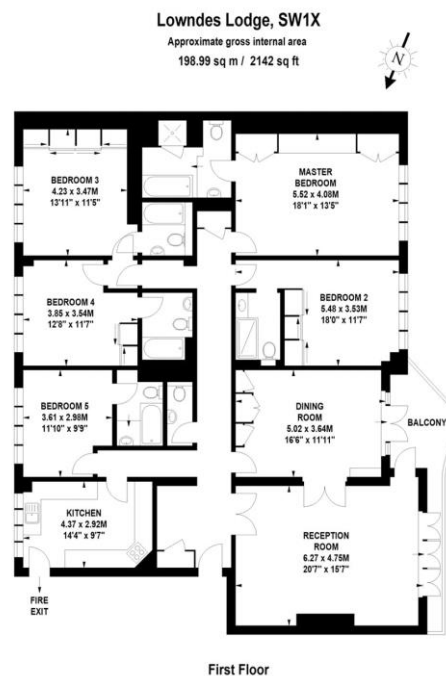






Price: £22,100 per month (£5,100 per week)

EPC: D



The floor plan is not to scale and measurements and areas shown are approximate and therefore should be used for illustrative purposes only. The plan has been prepared in accordance with the RICS code of Measuring Practice and whilst we have confidence in the information produced, it must be not be relied on. If there is any aspect of particular importance, you should carry out or commission your own inspection of the property.  
Copyright of FeaturePRO.

## Lowndes Lodge, SW1X

Approximate gross Internal area  
199.0 sq m / £10.32/Sq.Ft. p/m

This plan is for layout guidance only. Not drawn to scale unless stated. Windows and door openings approximate. Whilst every care is taken in the preparation of this plan, please check all dimensions, shapes and compass bearings before making decisions reliant upon them.



## Location

A spacious five-bedroom apartment with west facing views over the gardens of Cadogan Place. The flat is arranged over the first floor of this popular building. The property has been entirely refurbished to a high and modern standard.

The property benefits from a balcony, porterage, lift and access to Cadogan Place gardens by separate arrangement.

Lowndes Lodge is excellently located being close to the International boutiques and shops of Sloane Street and Brompton Road.





Chestertons Knightsbridge & Belgravia  
31 Lowndes Street  
London, SW1X

02072353530  
knightsbridgelettingsusers@chestertons.  
chestertons.co.uk

Chesterton Global Ltd trading as Chestertons for themselves and for the vendor of this property whose agents they are, give notice that (i) these particulars do not constitute any part of an offer or contract, (ii) all statements contained within these particulars are made without responsibility on the part of Chestertons or the vendor, (iii) whilst made in good faith, none of the statements contained within these particulars are to be relied upon as a statement or representation of fact, (iv) any intending purchasers must satisfy themselves by inspection or otherwise as to the correctness of each of the statements contained within these particulars, (v) the vendor does not make or give either Chestertons or any person in their employment any authority to make or give representation or warranty whatsoever in relation to this property. Wide angle lenses may be used. ©Copyright Chestertons | Chesterton Global Ltd | Registered Office 40 Connaught Street, Hyde Park, London W2 2AB Registered Company Number 05334580.

