



Eaton Place

London, SW1X

£11,916.67 per month
(£2,750 per week)

A magnificent duplex apartment spanning across 1,695 sq. ft.. The apartment has high ceilings, wooden floors, and floor to ceiling windows.



Eaton Place

London, SW1X

- Floor to ceiling windows
- High ceilings
- Large amount of storage
- Professionally managed
- Caretaker
- Prime Location



The property benefits from wood flooring, natural light and modern finishings. Two large bedrooms with built in storage, two en- suites and a guest W/C. The property also has a separate modern kitchen.

Eaton Place is moments from Pimlico Road and Sloane Square, with Kings Road and Victoria Station also just a short walk.

Minimum Term: 12 months
Deposit Required: £16,500.00
Local Authority: City of Westminster
Council Tax Band: H
EPC Rating: D
Part Furnished, Unfurnished

Energy Efficiency Rating		
	Current	Potential
Very energy efficient - lower running costs		
A (94-100)		
B (81-93)		
C (69-80)		
D (55-68)	64	80
E (39-54)		
F (21-38)		
G (1-20)		
Not energy efficient - higher running costs		
England, Scotland & Wales EU Directive 2002/91/EC		

Chestertons Premier Property Management

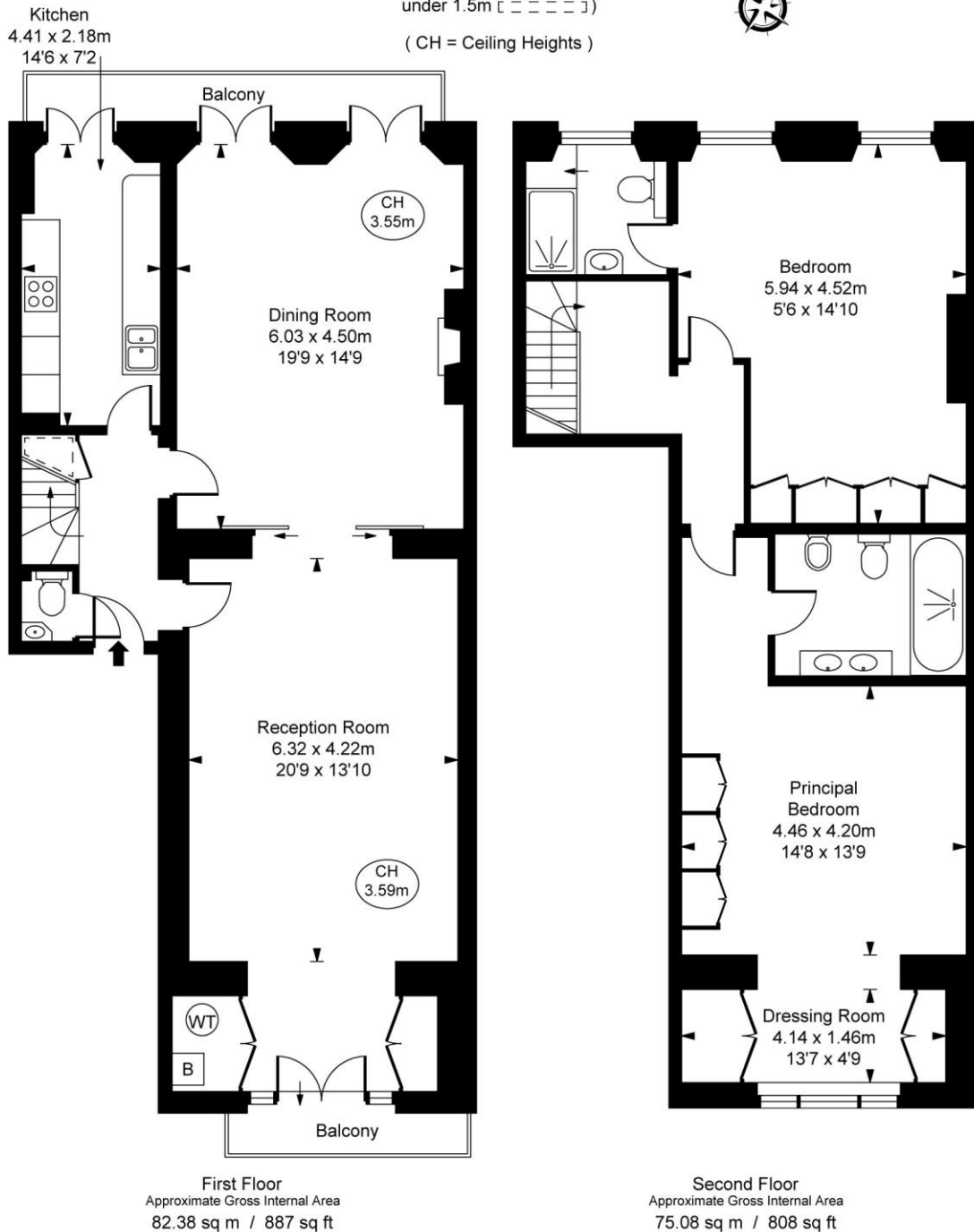
26 Clifton Road
 London
 W9 1SX
premier.dept@chestertons.co.uk
 02072985908
chestertons.co.uk

Additional tenant charges apply (fees apply to non-AST tenancies only)
 Tenancy Agreement Fee: £300
 References per Tenant/Guarantor: £60
 Inventory check (approx. £100 – £250 inc. VAT)
chestertons.co.uk/property-to-rent/applicable-fees

Eaton Place, SW1X
Approximate Gross Internal Area
157.46 sq m / 1,695 sq ft

(Including restricted height
under 1.5m [- - - -])

(CH = Ceiling Heights)



This plan is not to scale. It is for guidance and not for valuation purposes.
All measurements and areas are approximate only, and have been prepared in accordance with the current edition of the RICS Code of Measuring Practice.
© Fulham Performance

