



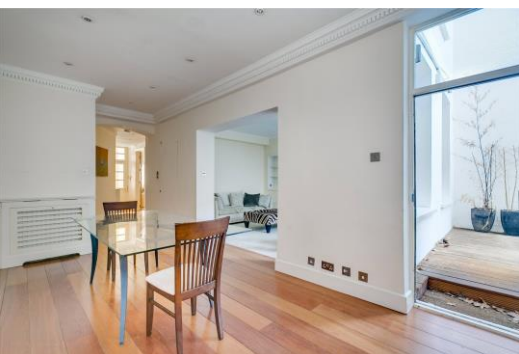
# Ennismore Gardens

London, SW7

£7,000 per month  
(£1,615.38 per week)

**SHORT LET** | Stunning lateral garden flat located moments from Hyde Park, on a popular garden square. The accommodation is circa 1,512 sq. ft. and comprises of a large reception/dining room, private garden, two large double bedrooms and two bathrooms.





# Ennismore Gardens

London, SW7

- Short Let
- Private rear garden
- Two double bedrooms
- Two bathrooms
- Modern kitchen with utility room
- Guest WC





Stunning lateral garden flat located moments from Hyde Park, on a popular garden square. The accommodation is circa 1,512 sq ft and comprises of a large reception/dining room, private rear garden, separate modern kitchen and utility room, guest WC, two large double bedrooms and two bathrooms.

**Minimum Term:** 1 month  
**Deposit Required:** £3,230.77  
**Local Authority:** City of Westminster  
**Council Tax Band:** G  
**EPC Rating:** D  
**Furnished, Unfurnished**

Energy Efficiency Rating		
	Current	Potential
Very energy efficient - lower running costs		
A (94-100)		
B (81-93)		
C (69-80)		
D (55-68)	60	68
E (39-54)		
F (21-38)		
Not energy efficient - higher running costs		
G (1-20)		
England, Scotland & Wales EU Directive 2002/91/EC		

### Chestertons Knightsbridge & Belgravia Lettings

31 Lowndes Street  
 London  
 SW1X 9HX  
[knightsbridglettingsusers@chestertons.co.uk](mailto:knightsbridglettingsusers@chestertons.co.uk)  
 02072353530  
[chestertons.co.uk](http://chestertons.co.uk)

Additional tenant charges apply (fees apply to non-AST tenancies only)  
 Tenancy Agreement Fee: £300  
 References per Tenant/Guarantor: £60  
 Inventory check (approx. £100 – £250 inc. VAT)  
[chestertons.co.uk/property-to-rent/applicable-fees](http://chestertons.co.uk/property-to-rent/applicable-fees)

## Ennismore Gardens, SW7

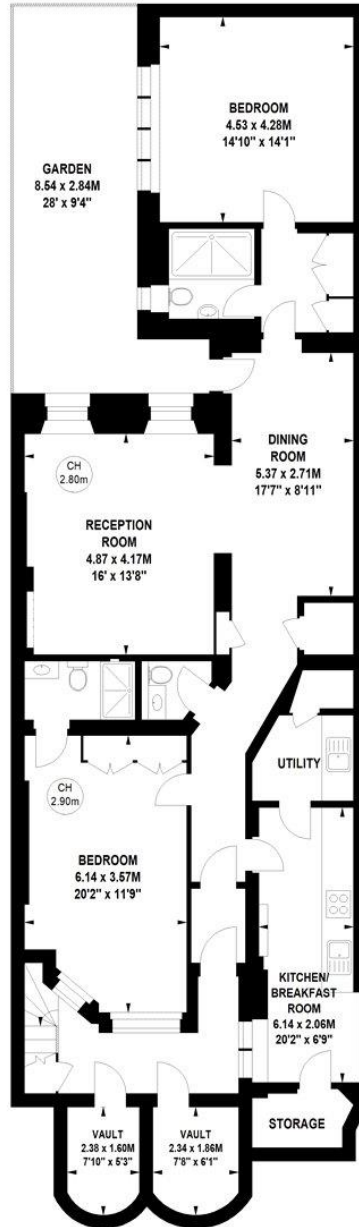
Approximate gross internal area

140.46 sq m / 1512 sq ft  
(Including Vaults)

Vaults

8.45 sq m / 91 sq ft

Key :  
CH - Ceiling Height



### Lower Ground Floor

The floor plan is not to scale and measurements and areas shown are approximate and therefore should be used for illustrative purposes only. The plan has been prepared in accordance with the RICS code of Measuring Practice and whilst we have confidence in the information produced, it must not be relied on. If there is any aspect of particular importance, you should carry out or commission your own inspection of the property.  
Copyright of FeaturePRO.

