



Belgrave Mews North

London, SW1X

£7,583.33 per month
(£1,750 per week)

An exceptional mews house arranged over three floors, located just north of Belgrave Square, moments from Hyde Park. The accommodation is circa 1,628 sq ft, with wood flooring, 3 bedrooms, 3 bathrooms and an eat-in kitchen.



Belgrave Mews North

London, SW1X

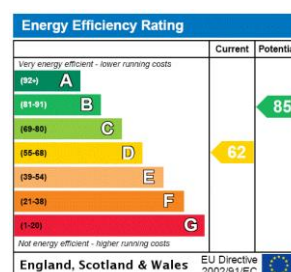
- Terrace
- Wooden floors
- Located in a quiet Mews
- Eat in kitchen
- Natural light
- Furnished



An exceptional mews house arranged over three floors, located just north of Belgrave Square, moments from Hyde Park.

The accommodation is circa 1,628 sq ft with wood flooring throughout and consists of a large eat-in kitchen, separate reception room with feature fire place, three double bedrooms, three bathrooms and large roof terrace.

Minimum Term: 12 months
Deposit Required: 5 weeks
Local Authority: City of Westminster
Council Tax Band: H
EPC Rating: D
Furnished



Chestertons Knightsbridge & Belgravia Lettings

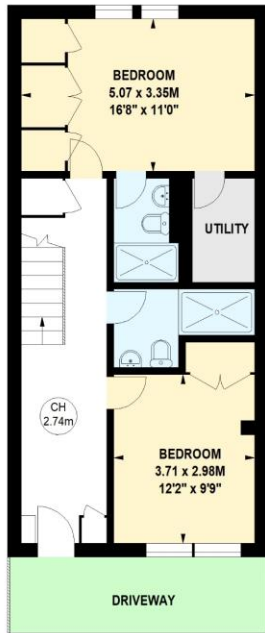
31 Lowndes Street
 London
 SW1X 9HX
knightsbridge@chestertons.co.uk
 02072353530
chestertons.co.uk

Additional tenant charges apply (fees apply to non-AST tenancies only)
 Tenancy Agreement Fee: £300
 References per Tenant/Guarantor: £60
 Inventory check (approx. £100 – £250 inc. VAT)
chestertons.co.uk/property-to-rent/applicable-fees

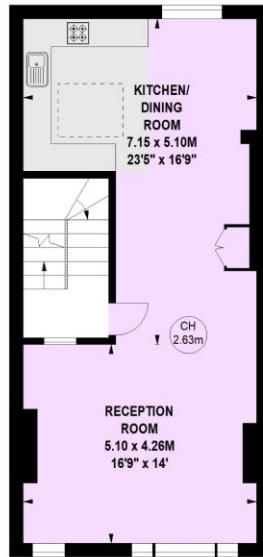
Belgrave Mews North, SW1X

Approximate gross internal area
151.24 sq m / 1628 sq ft

Key :
CH - Ceiling Height



Ground Floor



First Floor



Second Floor

Not to scale, for guidance only and must not be relied upon as a statement of fact.
All measurements and areas are approximate only

