



# Cadogan Square

Knightsbridge, SW1X

£26,000 per month  
(£6,000 per week)

A spectacular duplex apartment refurbished to a high standard, located on the prestigious Cadogan Square. Key features include, air conditioning, Lutron lighting, iPad-controlled entertainment system, wood flooring and private balcony.

CHESTERTONS



# Cadogan Square

## Knightsbridge, SW1X

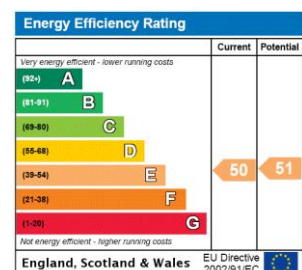
- Refurbished to a very high standard
- Three bathrooms
- Air conditioning
- Wood flooring
- Located on Cadogan Square





Refurbished to the highest standards this stunning duplex apartment is located in a red brick period building overlooking one of London's most beautiful garden squares. Key features include, air conditioning, Lutron lighting, iPad controlled entertainment system with cinema room on mezzanine level, exceptional ceiling height and wood flooring. Additional benefits include a private balcony and access to garden square and tennis courts (by separate negotiation).

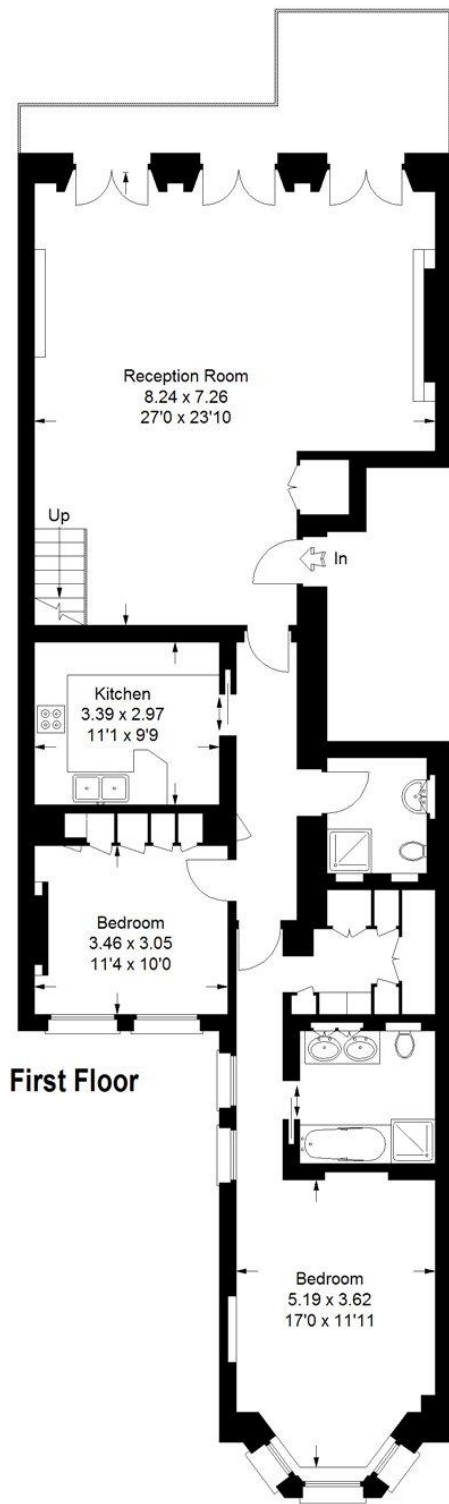
**Minimum Term:** 12 months  
**Deposit Required:** Six weeks  
**Local Authority:** Royal Borough of Kensington & Chelsea  
**Council Tax Band:**  
**EPC Rating:** E  
**Furnished**



### *Chestertons Knightsbridge & Belgravia Lettings*

31 Lowndes Street  
 London  
 SW1X 9HX  
[knightsbridglettingsusers@chestertons.co.uk](mailto:knightsbridglettingsusers@chestertons.co.uk)  
 02072353530  
[chestertons.co.uk](http://chestertons.co.uk)

Additional tenant charges apply (fees apply to non-AST tenancies only)  
 Tenancy Agreement Fee: £300  
 References per Tenant/Guarantor: £60  
 Inventory check (approx. £100 – £250 inc. VAT)  
[chestertons.co.uk/property-to-rent/applicable-fees](http://chestertons.co.uk/property-to-rent/applicable-fees)



Approximate Gross Internal Area = 181 sq m / 1948 sq ft



= Reduced headroom below 1.5 m / 5'0

FLOORPLANZ © 2013 0845 6344080 Ref 119645

This plan is for layout guidance only. Not drawn to scale unless stated. Windows & door openings are approximate. Whilst every care is taken in the preparation of this plan, please check all dimensions, shapes & compass bearings before making any decisions reliant upon them.

