



Pont Street

London, SW1X

£26,650 per month
(£6,150 per week)

Immaculately presented duplex apartment of circa 2,266 sq ft, with concierge, air-conditioning system throughout, stunning wood flooring and direct lift access. Perfectly located just a short walk from Hyde Park and Sloane Square.



Pont Street

London, SW1X

- Air-conditioning system throughout
- Wood flooring
- Kitchen fitted with Gaggenau appliances
- Direct lift access
- Concierge

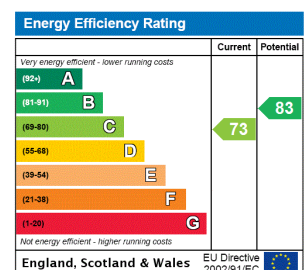


An immaculately presented duplex apartment of circa 2,266 sq ft, with concierge, air-conditioning system throughout, stunning wood flooring and direct lift access. The property is finished to a very high standard and located moments from Sloane Street.

The accommodation includes an impressive open plan reception/dining room, separate study, modern kitchen fitted with Gaggenau appliances, three double bedrooms and three bathrooms.

Perfectly located just a short walk from Hyde Park, Sloane Square and Harrods.

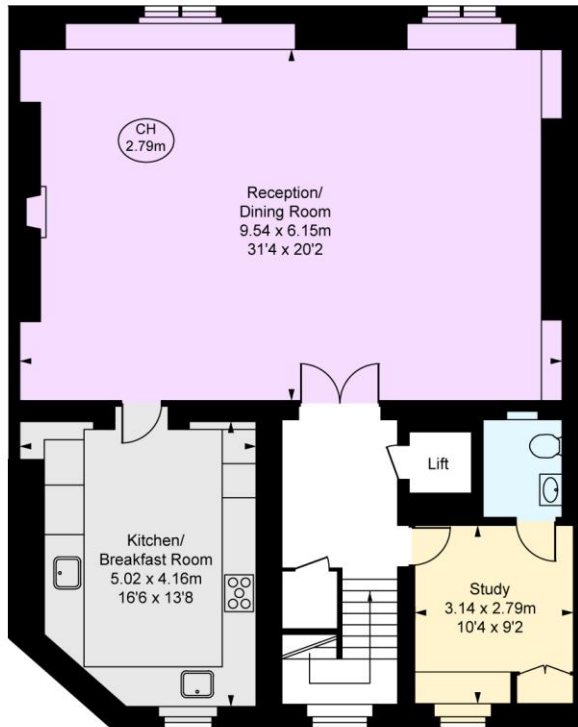
Minimum Term: 12 months
Deposit Required: £36,900.00
Local Authority: Kensington and Chelsea
Council Tax Band: H
EPC Rating: C
Furnished



Chestertons Knightsbridge & Belgravia Lettings

31 Lowndes Street
 London
 SW1X 9HX
knightsbridglettingsusers@chestertons.co.uk
 02072353530
chestertons.co.uk

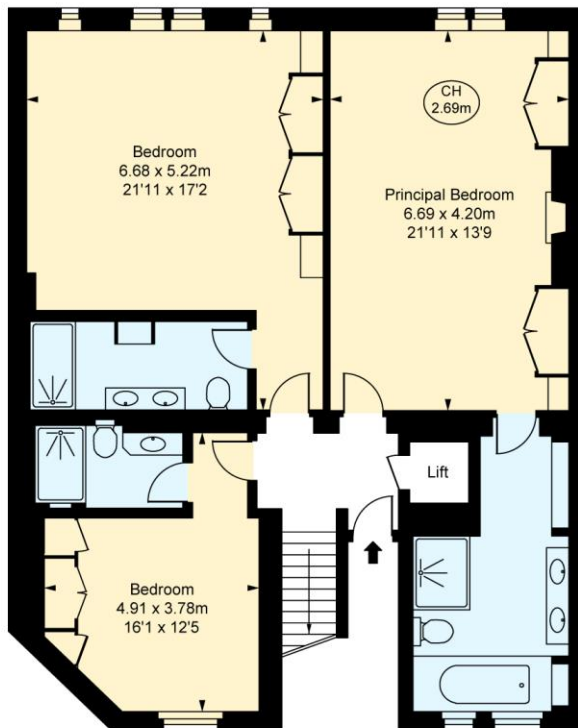
Additional tenant charges apply (fees apply to non-AST tenancies only)
 Tenancy Agreement Fee: £300
 References per Tenant/Guarantor: £60
 Inventory check (approx. £100 – £250 inc. VAT)
chestertons.co.uk/property-to-rent/applicable-fees



Pont Street, SW1X
 Approximate Gross Internal Area
210.53 sq m / 2,266 sq ft
 (Excluding Lift)
 (CH = Ceiling Heights)



Fourth Floor
 Approximate Gross Internal Area
107.43 sq m / 1,156 sq ft



Third Floor
 Approximate Gross Internal Area
103.10 sq m / 1,110 sq ft

This plan is not to scale. It is for guidance only and not for valuation purposes.
 All measurements and areas are approximate only, and have been prepared in accordance with the current edition of the RICS Code of Measuring Practice.
 © Fulham Performance