



# Chesham Street

London, SW1X

£4,485 per month  
(£1,035 per week)

An exquisite, meticulously designed two bedroom flat with far-reaching westerly views and roof terrace, situated on the fourth floor (with lift) of this superbly managed development with porter.



# Chesham Street

London, SW1X

- Two Bathrooms
- Roof Terrace
- Far-Reaching Views
- Porter
- Lift access



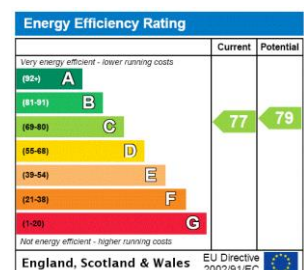


An exquisite, interior designed two bedroom flat with far-reaching westerly views and roof terrace, situated on the fourth floor (with lift) of this superbly managed portered block in Belgravia.

The apartment is situated in arguably the best position within Chalfont House as it benefits from superb rooftop views and excellent light. Meticulously designed utilising the highest quality materials, the apartment is well-planned and makes the ideal pied-a-terre.

Chalfont House is situated in Belgravia, within walking distance of Sloane Square and Knightsbridge and ideally positioned for the wonderful range of internationally renowned shops, restaurants and hotels that this exclusive neighbourhood offers.

**Minimum Term:** 12 months  
**Deposit Required:** £6,210.00  
**Local Authority:** Kensington and Chelsea  
**Council Tax Band:** G  
**EPC Rating:** C  
**Furnished**



### *Chestertons Knightsbridge & Belgravia Lettings*

31 Lowndes Street  
 London  
 SW1X 9HX  
[knightsbridgelettingsusers@chestertons.co.uk](mailto:knightsbridgelettingsusers@chestertons.co.uk)  
 02072353530  
[chestertons.co.uk](http://chestertons.co.uk)

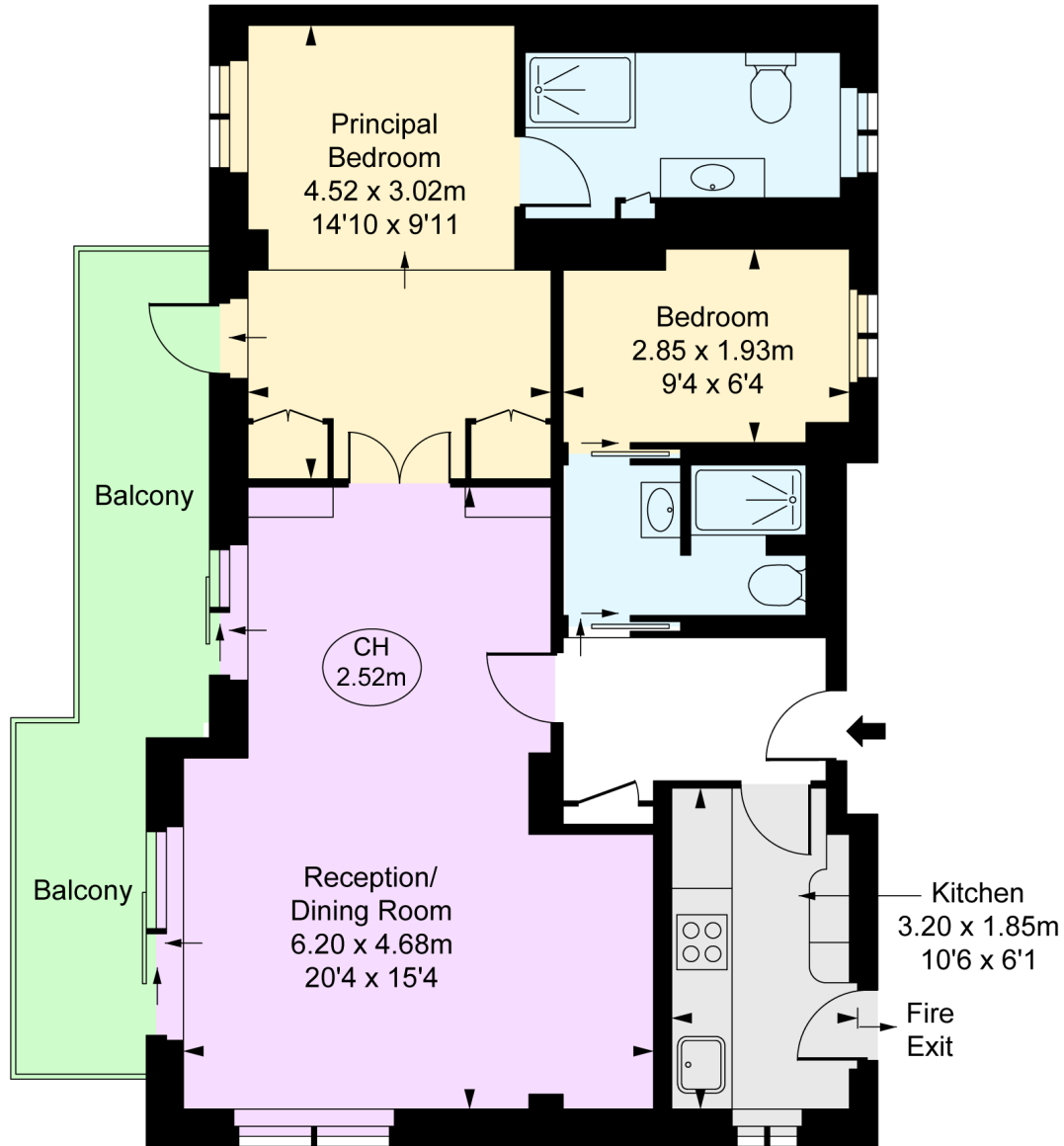
Additional tenant charges apply (fees apply to non-AST tenancies only)  
 Tenancy Agreement Fee: £300  
 References per Tenant/Guarantor: £60  
 Inventory check (approx. £100 – £250 inc. VAT)  
[chestertons.co.uk/property-to-rent/applicable-fees](http://chestertons.co.uk/property-to-rent/applicable-fees)



# Chalfont House, Chesham Street, SW1X

Approximate Gross Internal Area  
65.75 sq m / 708 sq ft

( CH = Ceiling Heights )



Fourth Floor

This plan is not to scale. It is for guidance and not for valuation purposes.  
All measurements and areas are approximate only, and have been prepared in accordance with the current edition of the RICS Code of Measuring Practice.  
© Fulham Performance

