



# Belgrave Mews North

London, SW1X

£9,750 per month  
(£2,250 per week)

Exceptional mews house brand newly refurbished throughout and arranged over four floors, located just north of Belgrave Square. The accommodation is circa 1,317 sq. ft. and includes features such as wood flooring and a private terrace.



# Belgrave Mews North

## London, SW1X

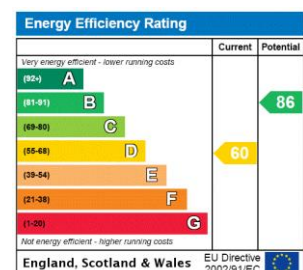
- Wooden Floors in reception room
- Two bathrooms
- Utility Room
- Terrace
- Gym area/Study Room





Exceptional mews house brand newly refurbished throughout and arranged over four floors, located just north of Belgrave Square. The accommodation is circa 1,317 sq. ft. and includes features such as wood flooring and a private terrace.

**Minimum Term:** months  
**Deposit Required:** £0.00  
**Local Authority:** City of Westminster  
**Council Tax Band:** H  
**EPC Rating:** D  
**Furnished**



### Chestertons Knightsbridge & Belgravia Lettings

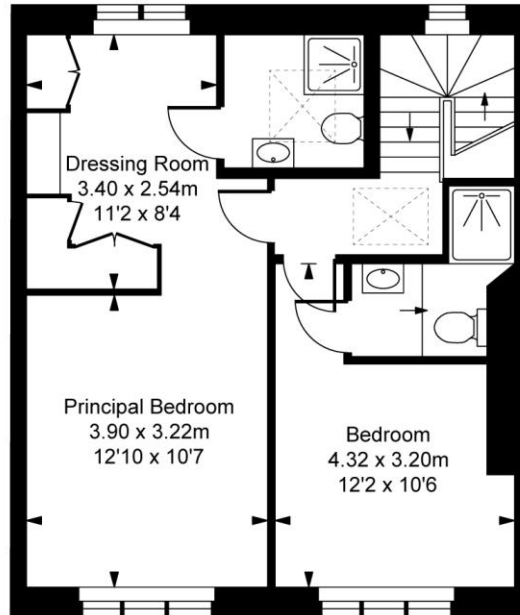
31 Lowndes Street  
 London  
 SW1X 9HX  
[knightsbridglettingsusers@chestertons.co.uk](mailto:knightsbridglettingsusers@chestertons.co.uk)  
 02072353530  
[chestertons.co.uk](http://chestertons.co.uk)

Additional tenant charges apply (fees apply to non-AST tenancies only)  
 Tenancy Agreement Fee: £300  
 References per Tenant/Guarantor: £60  
 Inventory check (approx. £100 – £250 inc. VAT)  
[chestertons.co.uk/property-to-rent/applicable-fees](http://chestertons.co.uk/property-to-rent/applicable-fees)

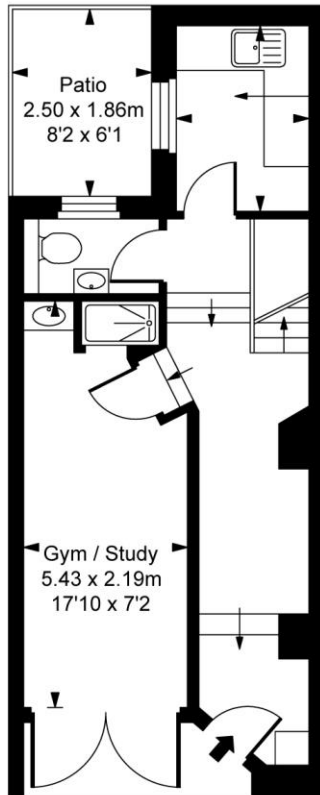
# Belgrave Mews North, SW1X

Approximate Gross Internal Area  
122.59 sq m / 1,320 sq ft

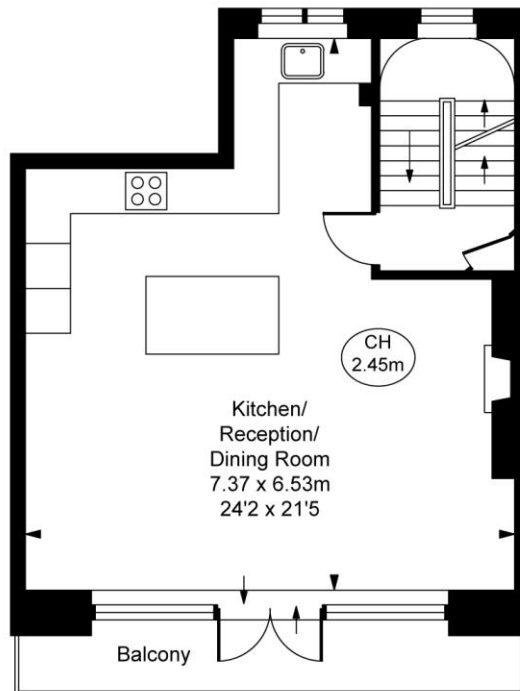
( CH = Ceiling Heights )



**Second Floor**  
Approximate Gross Internal Area  
48.12 sq m / 518 sq ft



**Ground Floor**  
Approximate Gross Internal Area  
30.23 sq m / 325 sq ft



**First Floor**  
Approximate Gross Internal Area  
44.24 sq m / 476 sq ft

This plan is not to scale. It is for guidance and not for valuation purposes.  
All measurements and areas are approximate only, and have been prepared in accordance with the current edition of the RICS Code of Measuring Practice.  
© Fulham Performance

