



Lower Belgrave Street

Belgravia, SW1W

£2,491.67 per month
(£575 per week)

Beautifully presented one bedroom apartment of circa 413 sq ft. Finished to a high standard throughout and benefitting from wood flooring and 2.4 metre ceiling in the reception. Rent inclusive of utilities.



Lower Belgrave Street

Belgravia, SW1W

- Wooden floors
- Built in storage
- Professionally managed
- Utilities included in the rent

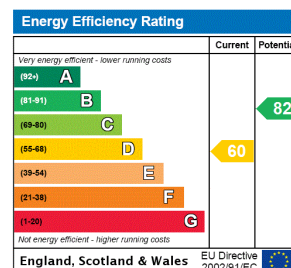


Beautifully presented one bedroom apartment of circa 413 sq ft. Finished to a high standard throughout and benefitting from wood flooring and 2.4 metre ceiling in the reception. Rent inclusive of utilities.

The accommodation also includes a separate kitchen, modern bathroom and double bedroom with built-in storage.

(Please note that the photos are as previously marketed, décor and furnishings may vary).

Minimum Term: 12 months
Deposit Required: £2,875.00
Local Authority: Westminster City Council
Council Tax Band: G
EPC Rating: D
Furnished



Chestertons Knightsbridge & Belgravia Lettings

31 Lowndes Street
 London
 SW1X 9HX
knightbridgelettingsusers@chestertons.co.uk
 02072353530
chestertons.co.uk

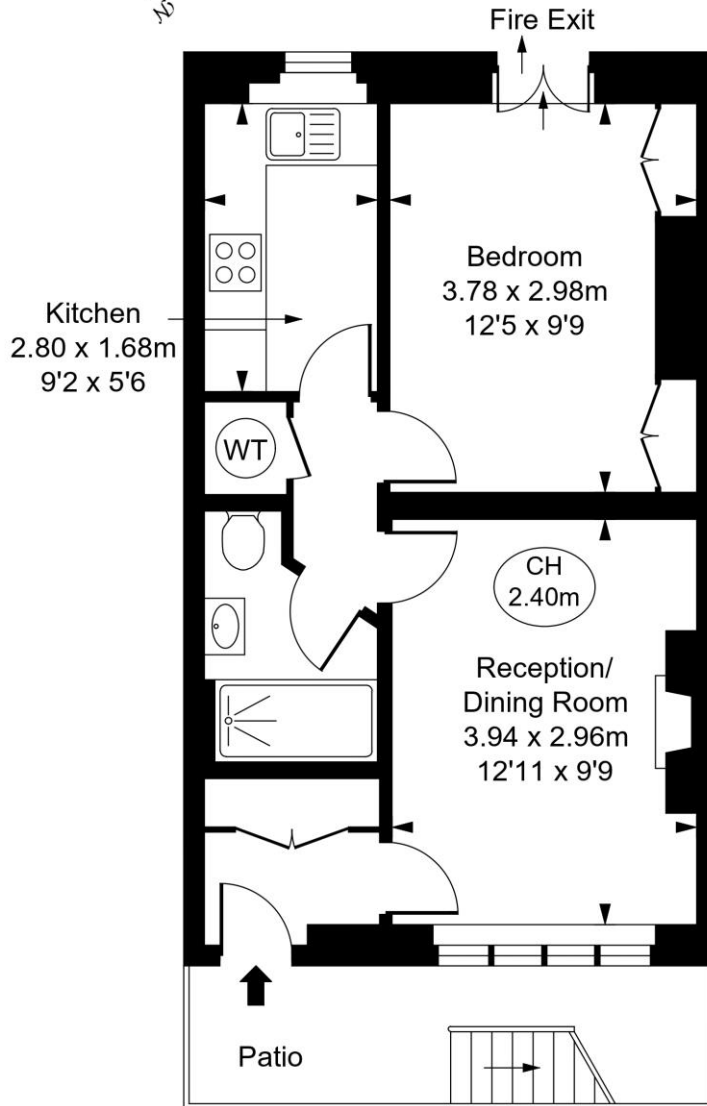
Additional tenant charges apply (fees apply to non-AST tenancies only)
 Tenancy Agreement Fee: £300
 References per Tenant/Guarantor: £60
 Inventory check (approx. £100 – £250 inc. VAT)
chestertons.co.uk/property-to-rent/applicable-fees

Lower Belgrave Street, SW1W

Approximate Gross Internal Area
38.34 sq m / 413 sq ft



(CH = Ceiling Heights)



Lower Ground Floor

This plan is not to scale. It is for guidance and not for valuation purposes.
All measurements and areas are approximate only, and have been prepared in accordance with the current edition of the RICS Code of Measuring Practice.
© Fulham Performance

