



# Lower Belgrave Street

Belgravia, SW1W

£2,383.33 per month  
(£550.00 per week)

Beautifully presented apartment of circa 413 sq ft, finished to a high standard throughout and offering a separate kitchen, modern bathroom and double bedroom with built-in storage. Rent inclusive of utilities.



## Lower Belgrave Street

Belgravia, SW1W

- Wooden floors
- Built in storage
- Professionally managed
- Gas, water and electricity included in rent
- Pets allowed





Beautifully presented apartment of circa 413 sq. ft, finished to a high standard throughout and offering a separate kitchen, modern bathroom and double bedroom with built-in storage. Rent inclusive of utilities.

**Minimum Term:** 12 months  
**Deposit Required:** £2,750.00  
**Local Authority:** Westminster City Council  
**Council Tax Band:** G  
**EPC Rating:** D  
**Furnished**

Energy Efficiency Rating		
	Current	Potential
Very energy efficient - lower running costs		
<b>A</b> (92-100)		
<b>B</b> (81-91)		82
<b>C</b> (69-80)		
<b>D</b> (55-68)	60	
<b>E</b> (39-54)		
<b>F</b> (21-38)		
<b>G</b> (1-20)		
Not energy efficient - higher running costs		
England, Scotland & Wales		EU Directive 2002/91/EC

### Chestertons Knightsbridge & Belgravia Lettings

31 Lowndes Street  
 London  
 SW1X 9HX  
[knightsbridge@chestertons.co.uk](mailto:knightsbridge@chestertons.co.uk)  
 02072353530  
[chestertons.co.uk](http://chestertons.co.uk)

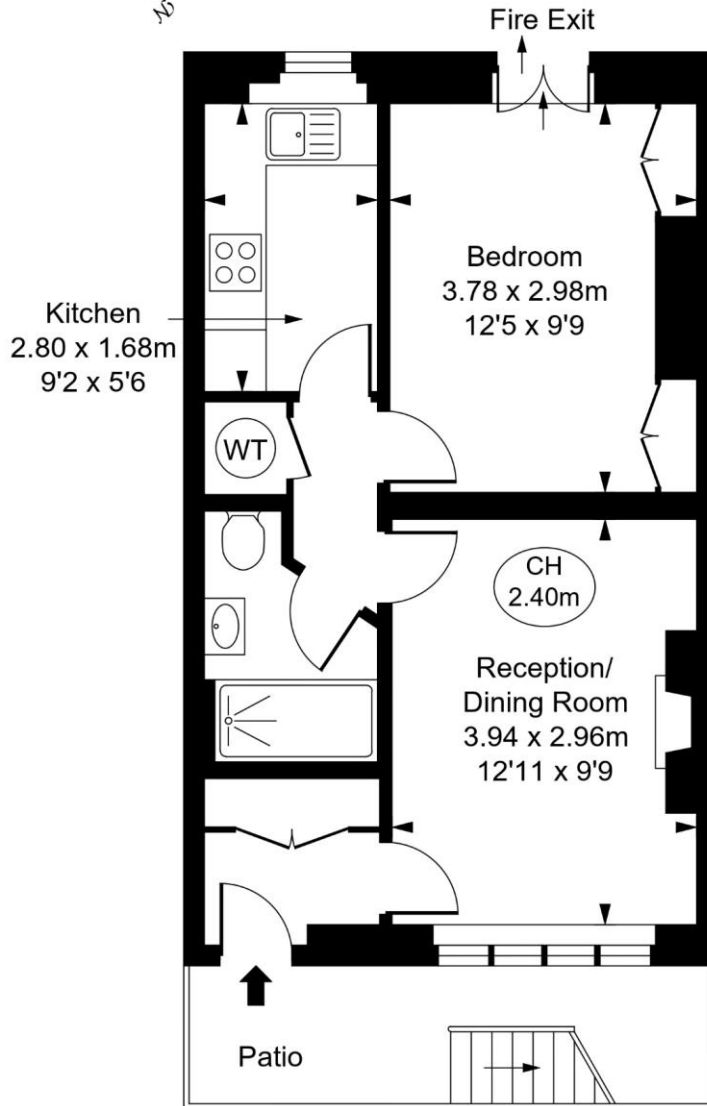
Additional tenant charges apply (fees apply to non-AST tenancies only)  
 Tenancy Agreement Fee: £300  
 References per Tenant/Guarantor: £60  
 Inventory check (approx. £100 – £250 inc. VAT)  
[chestertons.co.uk/property-to-rent/applicable-fees](http://chestertons.co.uk/property-to-rent/applicable-fees)

# Lower Belgrave Street, SW1W

Approximate Gross Internal Area  
38.34 sq m / 413 sq ft



( CH = Ceiling Heights )



## Lower Ground Floor

This plan is not to scale. It is for guidance and not for valuation purposes.

All measurements and areas are approximate only, and have been prepared in accordance with the current edition of the RICS Code of Measuring Practice.

© Fulham Performance

