

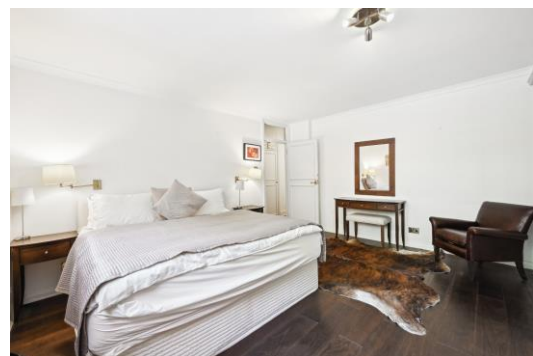


# Rutland Gate

London, SW7

£5,450 per month  
(£1,257.69 per week)

An excellent opportunity to live on one of Knightsbridge's most desirable and quiet locations. Beautifully presented ground floor apartment arranged over circa 1,270 Sq Ft with porter, located moments from Hyde Park.



# Rutland Gate

London, SW7

- Porter
- Wood flooring
- Moments from Hyde Park
- Three bedrooms
- Large reception/dining room





An excellent opportunity to live on one of Knightsbridge's most desirable and quiet locations.

Beautifully presented ground floor apartment arranged over circa 1,270 Sq Ft with porter. The accommodation includes three bedrooms, two bathrooms, large reception/dining room and separate fully fitted kitchen. The property has been decorated to an excellent standard throughout with high quality fixtures and fittings.

Rutland Gate is incredibly well located to make the most of living in popular Knightsbridge. There is easy access to a number of local supermarkets, shops, restaurants and cafes. Knightsbridge Underground Station is within walking distance and Hyde Park is on the doorstep.

---

<b>Minimum Term:</b>	<b>12 months</b>
<b>Deposit Required:</b>	<b>£7,546.15</b>
<b>Local Authority:</b>	<b>City of Westminster</b>
<b>Council Tax Band:</b>	<b>H</b>
<b>Furnished</b>	

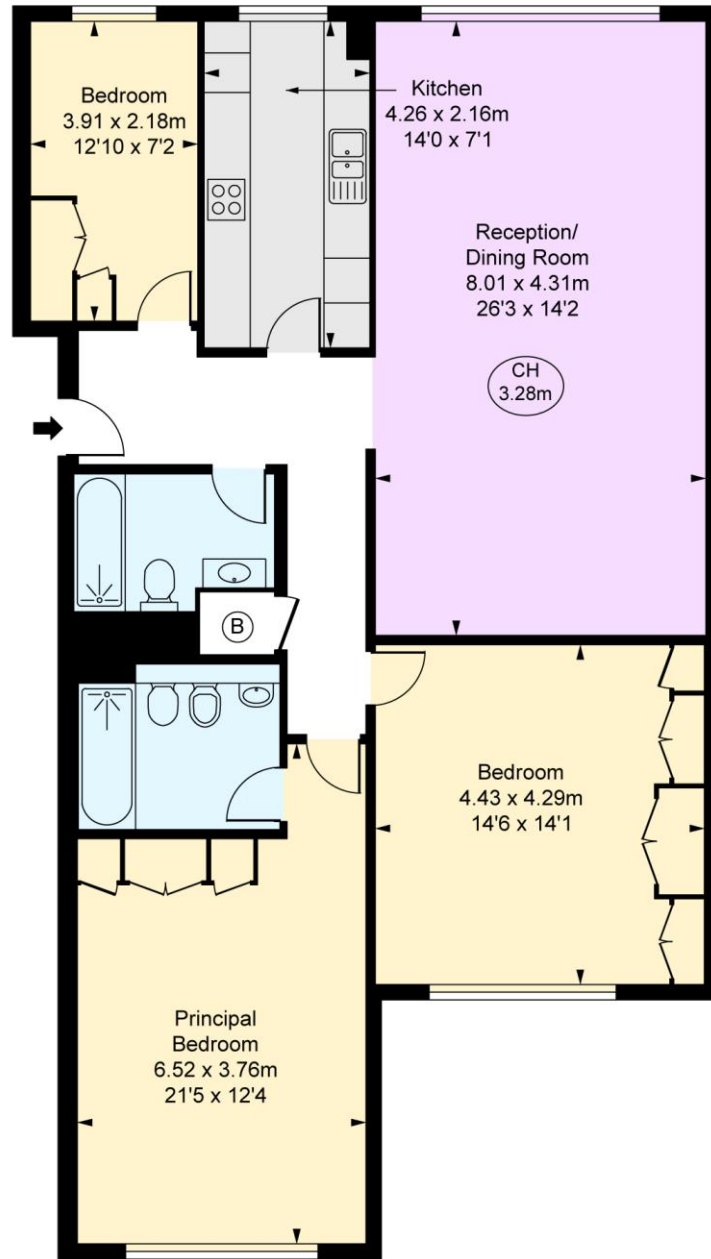
---

### *Chestertons Knightsbridge & Belgravia Lettings*

31 Lowndes Street  
London  
SW1X 9HX  
knightsbridgelettingsusers@chestertons.co.uk  
02072353530  
chestertons.co.uk

Additional tenant charges apply (fees apply to non-AST tenancies only)  
Tenancy Agreement Fee: £300  
References per Tenant/Guarantor: £60  
Inventory check (approx. £100 – £250 inc. VAT)  
[chestertons.co.uk/property-to-rent/applicable-fees](https://www.chestertons.co.uk/property-to-rent/applicable-fees)

Rutland Gate, SW7  
Approximate Gross Internal Area  
117.94 sq m / 1,270 sq ft  
( CH = Ceiling Heights )



Ground Floor

This plan is not to scale. It is for guidance and not for valuation purposes.  
All measurements and areas are approximate only, and have been prepared in accordance with the current edition of the RICS Code of Measuring Practice.  
© Fulham Performance

