



Ovington Square

London, SW3

£20,583.33 per month
(£4,750 per week)

A fantastic white stucco terraced house of circa 3632sqft located on a charming garden square in the heart of Knightsbridge.



Ovington Square

London, SW3

- High ceilings
- Patio garden
- White stucco fronted
- Separate dining room
- Garden square

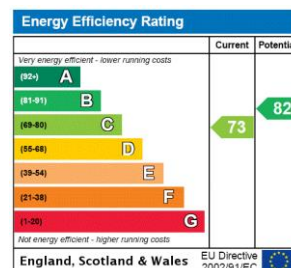


A fantastic white stucco terraced house of circa 3632sqft located on a charming garden square in the heart of Knightsbridge.

The accommodation consists of a large first floor reception with 3.2m ceilings, a ground floor kitchen and adjoining dining room, a stunning patio garden, a separate family sitting room and 5/6 bedrooms with accompanying bathrooms.

Ovington Square is located just moments from Harrods and the popular shopping experience offered on Brompton Road and Sloane Street. Also in close proximity are Hyde Park and Knightsbridge station.

Minimum Term: 12 months
Deposit Required: £28,500.00
Local Authority: Kensington and Chelsea
Council Tax Band: H
EPC Rating: C
Unfurnished



Chestertons Knightsbridge & Belgravia Lettings

31 Lowndes Street
 London
 SW1X 9HX
knightsbridgelettingsusers@chestertons.co.uk
 02072353530
chestertons.co.uk

Additional tenant charges apply (fees apply to non-AST tenancies only)
 Tenancy Agreement Fee: £300
 References per Tenant/Guarantor: £60
 Inventory check (approx. £100 – £250 inc. VAT)
chestertons.co.uk/property-to-rent/applicable-fees

Ovington Square, SW3

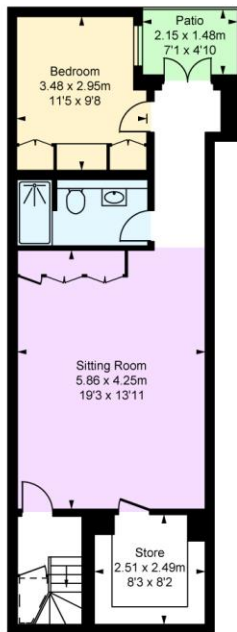
Approximate Gross Internal Area
332.70 sq m / 3,581 sq ft

Vault
4.68 sq m / 50 sq ft

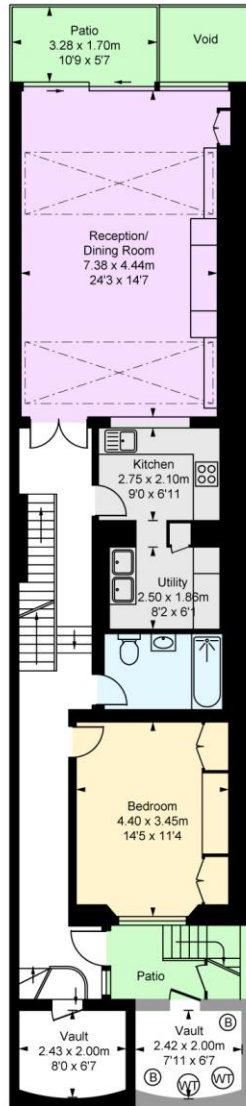
Total Areas Shown On Plan
337.38 sq m / 3,632 sq ft

(Including restricted height
under 1.5m □ = □)

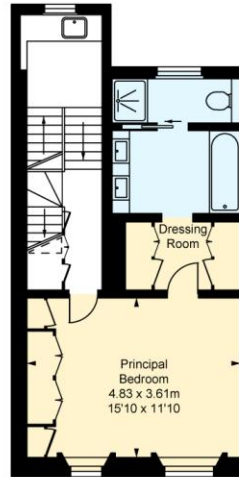
(CH = Ceiling Heights)



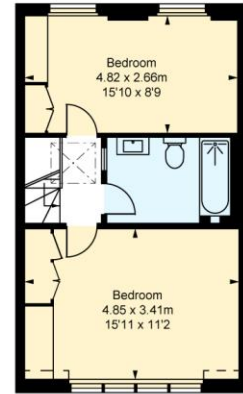
Basement
Approximate Gross Internal Area
56.39 sq m / 607 sq ft



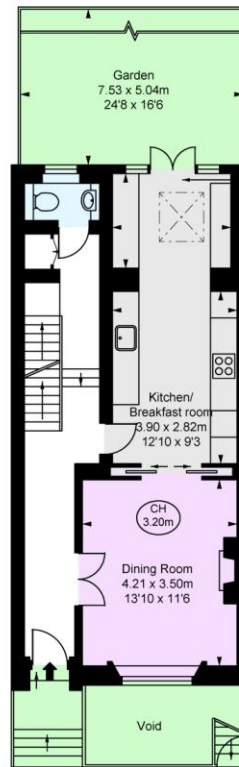
Lower Ground Floor
Approximate Gross Internal Area
95.04 sq m / 1,023 sq ft



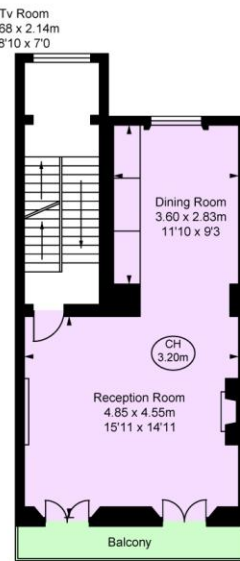
Second Floor
Approximate Gross Internal Area
44.05 sq m / 474 sq ft



Third Floor
Approximate Gross Internal Area
39.77 sq m / 428 sq ft



Ground Floor
Approximate Gross Internal Area
52.51 sq m / 565 sq ft



First Floor
Approximate Gross Internal Area
44.94 sq m / 484 sq ft

This plan is not to scale. It is for guidance and not for valuation purposes.
All measurements and areas are approximate only, and have been prepared in accordance with the current edition of the RICS Code of Measuring Practice.
© Crown Copyright

Chesterton UK Services Limited trading as Chestertons for themselves and for the vendor of this property whose agents they are, give notice that (i) these particulars do not constitute any part of an offer or contract, (ii) all statements contained within these particulars are made without responsibility on the part of Chestertons or the vendor, (iii) whilst made in good faith, none of the statements contained within these particulars are to be relied upon as a statement or representation of fact, (iv) any intending purchasers must satisfy themselves by inspection or otherwise as to the correctness of each of the statements contained within these particulars, (v) the vendor does not make or give either Chestertons or any person in their employment any authority to make or give representation or warranty whatsoever in relation to this property. Wide angle lenses may be used. ©Copyright Chestertons | Chesterton Global Ltd | Registered Office 40 Connaught Street, Hyde Park, London W2 2AB Registered Company Number 05334580.



This paper is
100% recyclable