



Wilbraham Place

London, SW1X

£8,233.33 per month
(£1,900.00 per week)

(SHORT LET) A newly refurbished and exceptionally bright flat of circa 552sqft on a quiet street behind Sloane Square. Set on the second floor with 3.1m ceilings, lift access and a south-facing aspect.



Wilbraham Place

London, SW1X

- Newly refurbished throughout
- High ceilings
- South facing aspect
- Walking distance to Sloane Square

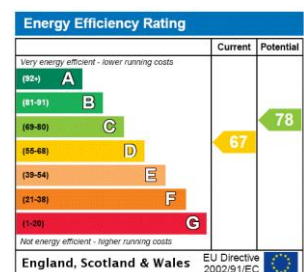


(SHORT LET) A newly refurbished and exceptionally bright flat of circa 552sqft on a quiet street behind Sloane Square. Set on the second floor with 3.1m ceilings, lift access and a south-facing aspect.

The accommodation consists of an impressive reception/dining room with adjoining kitchen and a quiet double bedroom to the rear of the property with an en-suite bathroom. Further storage is situated in the entrance hall of the property.

Located on Wilbraham Place, just moments from the Kings Road, the tube and the popular shops and restaurants of the local area.

Minimum Term: 12 months
Deposit Required: £3,800.00
Local Authority: Royal Borough of Kensington & Chelsea
Council Tax Band: F
EPC Rating: D
Furnished



Chestertons Knightsbridge & Belgravia Lettings

31 Lowndes Street
 London
 SW1X 9HX
knightsbridglettingsusers@chestertons.co.uk
 02072353530
chestertons.co.uk

Additional tenant charges apply (fees apply to non-AST tenancies only)
 Tenancy Agreement Fee: £300
 References per Tenant/Guarantor: £60
 Inventory check (approx. £100 – £250 inc. VAT)
chestertons.co.uk/property-to-rent/applicable-fees

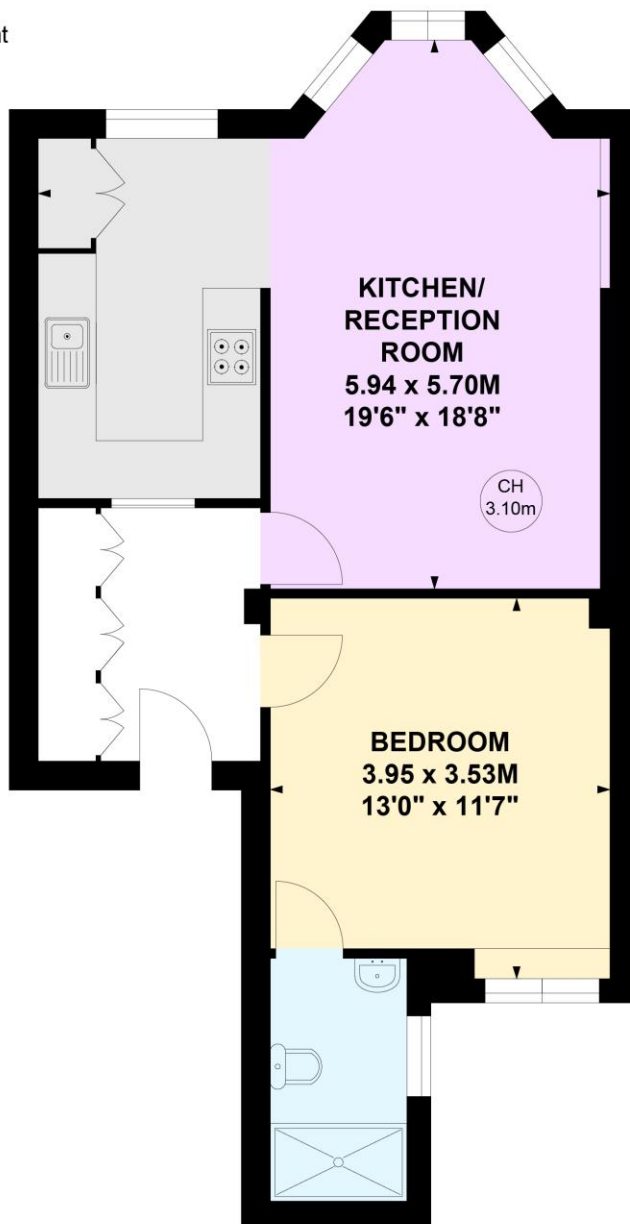
Wilbraham Place, SW1X

Approximate gross internal area

51.24 sq m / 552 sq ft

Key :

CH - Ceiling Height



Second Floor

Not to scale, for guidance only and must not be relied upon as a statement of fact.

All measurements and areas are approximate only

