



Montrose Court

Exhibition Road, SW7

£5,500 per month
(£1,269.23 per week)

A stunning 5th floor apartment situated in a prestigious development with lift access and porter, located moments from Hyde Park.

CHESTERTONS



Montrose Court

Exhibition Road, SW7

- Located moments from Hyde Park
- Wood flooring
- 5th floor with lift
- Porter
- Ideally located for South Kensington and Knightsbridge

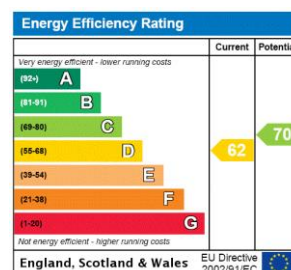


A stunning 5th floor apartment situated in a prestigious development with lift access and porter, located moments from Hyde Park.

The property has been tastefully refurbished and furnished to a high standard. The flat features an entrance hallway leading to a bright reception room/dining room, separate fully fitted kitchen, three double bedrooms and two family bathrooms.

Ideally located for the amenities of South Kensington and Knightsbridge. Furnished. Available for long let.

Minimum Term: 12 months
Deposit Required: £7,615.38
Local Authority: City of Westminster
Council Tax Band: G
EPC Rating: D
Unfurnished



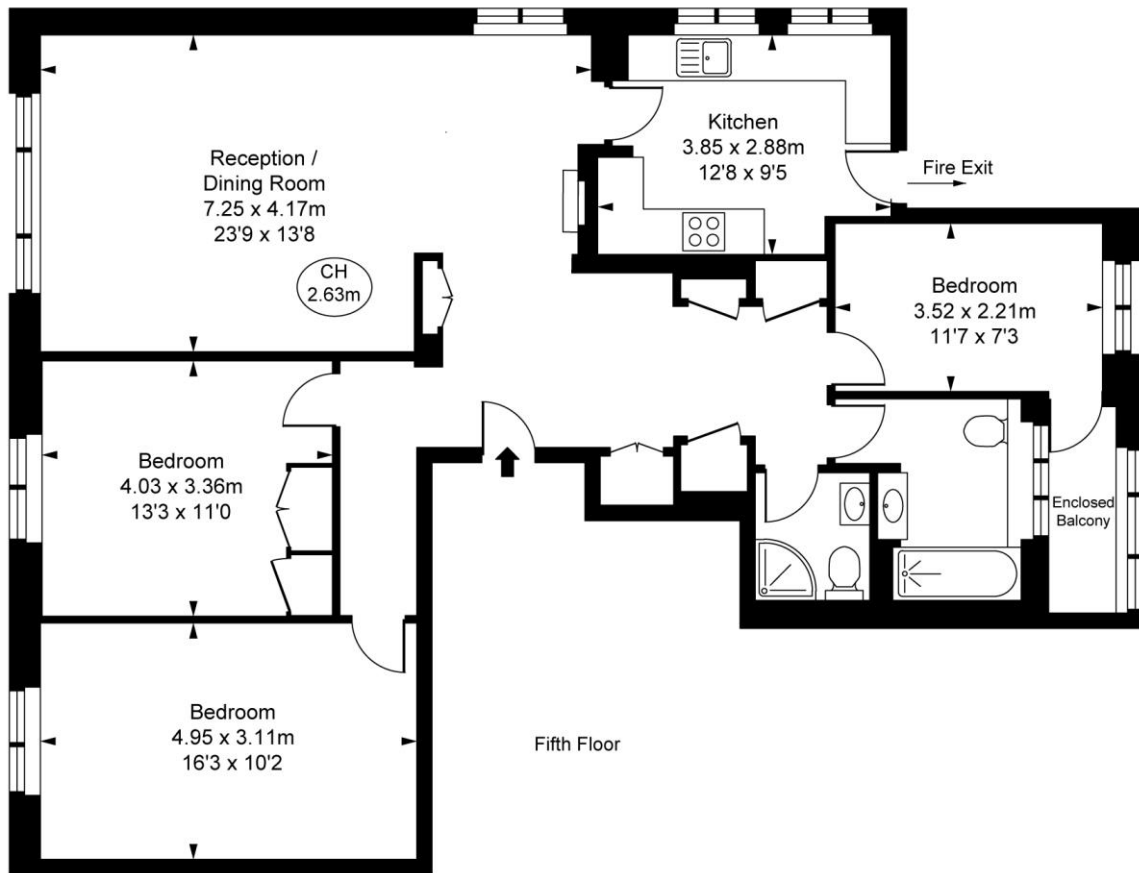
Chestertons Knightsbridge & Belgravia Lettings

31 Lowndes Street
 London
 SW1X 9HX
knightsbridglettingsusers@chestertons.co.uk
 02072353530
chestertons.co.uk

Additional tenant charges apply (fees apply to non-AST tenancies only)
 Tenancy Agreement Fee: £300
 References per Tenant/Guarantor: £60
 Inventory check (approx. £100 – £250 inc. VAT)
chestertons.co.uk/property-to-rent/applicable-fees

Montrose Court,
Exhibition Road, SW7
Approximate Gross Internal Area
102.95 sq m / 1,108 sq ft

(CH = Ceiling Heights)



This plan is not to scale. It is for guidance and not for valuation purposes.
All measurements and areas are approximate only, and have been prepared in accordance with the current edition of theRICS Code of Measuring Practice.
© Fulham Performance

