



Sloane Street

London, SW1X

£3,150 per month
(£726.92 per week)

Lateral 6th floor apartment situated in a highly sought-after development which benefits from a caretaker and lift access. The property is located on Sloane Street, just moments from Hyde Park.

CHESTERTONS



Sloane Street

London, SW1X

- Porter
- Lift
- Balcony
- Wooden floors
- Communal garden access (separate negotiation)

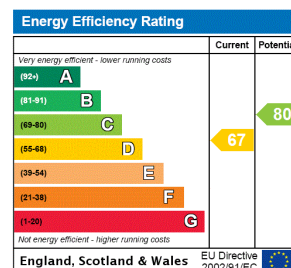


Lateral 6th floor apartment situated in a highly sought-after development which benefits from a caretaker and lift access. The property is located on Sloane Street, just moments from Hyde Park.

The property benefits from a spacious reception room with wooden floors, separate kitchen, double bedroom with built-in storage and a contemporary bathroom suite.

Sloane Street is located just a few minutes' walk from Hyde Park and both Knightsbridge and Hyde Park Corner tube stations. Also in close proximity and the popular shopping experience offered on Brompton Road, Sloane Square and Harrods.

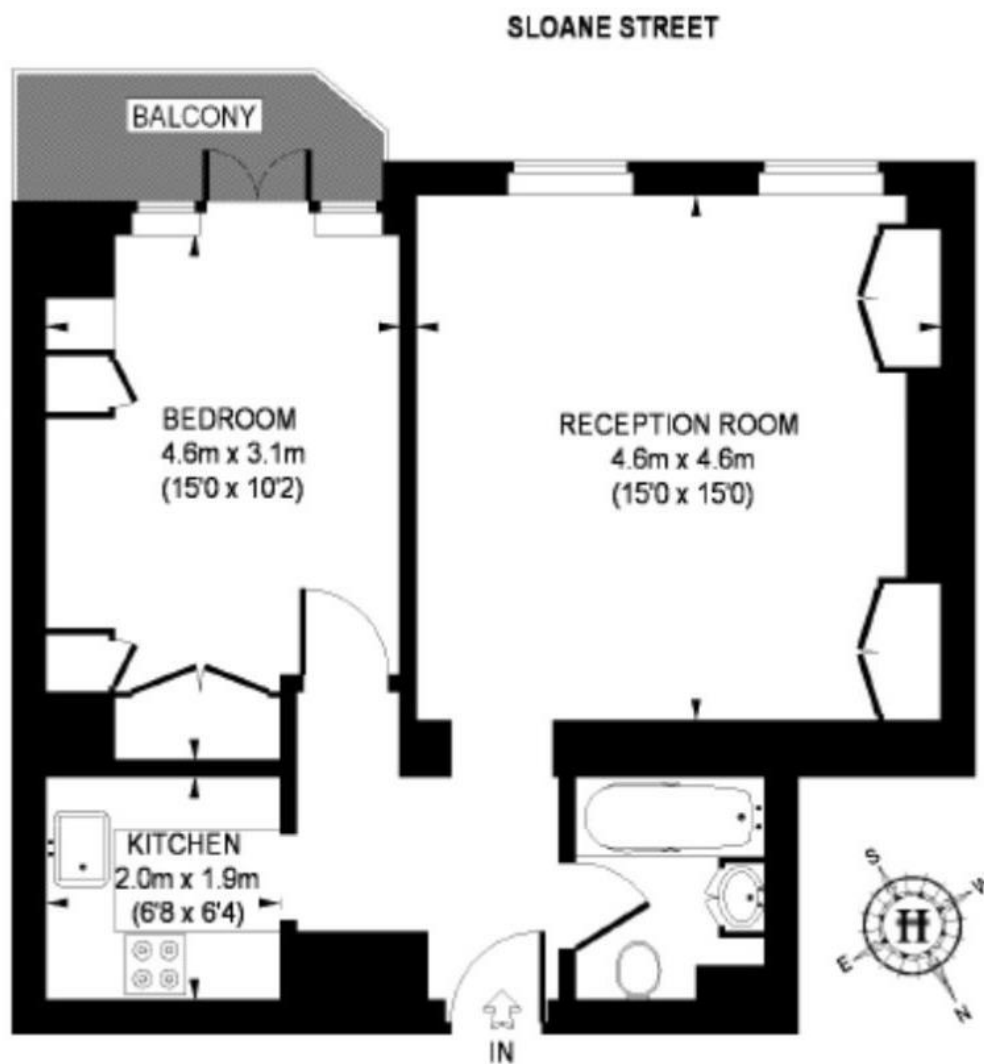
Minimum Term: 12 months
Deposit Required: £3,634.62
Local Authority: Royal Borough of Kensington & Chelsea
Council Tax Band: G
EPC Rating: D
Furnished



Chestertons Knightsbridge & Belgravia Lettings

31 Lowndes Street
 London
 SW1X 9HX
knightsbridglettingsusers@chestertons.co.uk
 02072353530
chestertons.co.uk

Additional tenant charges apply (fees apply to non-AST tenancies only)
 Tenancy Agreement Fee: £300
 References per Tenant/Guarantor: £60
 Inventory check (approx. £100 – £250 inc. VAT)
chestertons.co.uk/property-to-rent/applicable-fees



SIXTH FLOOR

APPROXIMATE GROSS INTERNAL AREA = 549 SQ. FT. (51 SQ. M.)

This plan is for layout guidance only. Not drawn to scale unless stated. Windows & door openings are approximate. Whilst every care is taken in the preparation of this plan, please check all dimensions, shapes & compass bearings before making any decisions reliant upon them.

