



Ann's Close

Knightsbridge, SW1X

£2,578.33 per month
(£595.00 per week)

An extremely charming & well-presented ground floor apartment of circa 560 sq. feet, with patio garden, located in a charming mews in the popular 'Motcomb Village' area of Belgravia. Utilities included in the rent.



Ann's Close

Knightsbridge, SW1X

- Private patio
- Wood flooring
- Popular Motcomb Village location
- Easy access to Hyde Park
- Utilities included in the rent



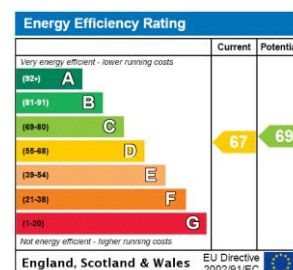
An extremely charming & well-presented ground floor apartment of circa 560 sq. feet, located in a charming mews in the popular 'Motcomb Village' area of Belgravia. Utilities included in the rent.

The property includes a lovely reception/dining room with wood flooring, decked patio space, separate fully fitted kitchen, spacious double bedroom and modern bathroom suite.

Ann's Close is accessed from Kinnerton Strert, perfectly situated for easy access to Hyde Park, Sloane Street and Harrods.

(Photos as previously marketed, furnishing and décor may vary)

Minimum Term: 12 months
Deposit Required: £2,975.00
Local Authority: Westminster City Council
Council Tax Band: F
EPC Rating: D
Furnished



Chestertons Knightsbridge & Belgravia Lettings

31 Lowndes Street
 London
 SW1X 9HX
knightsbridglettingsusers@chestertons.co.uk
 02072353530
chestertons.co.uk

Additional tenant charges apply (fees apply to non-AST tenancies only)
 Tenancy Agreement Fee: £300
 References per Tenant/Guarantor: £60
 Inventory check (approx. £100 – £250 inc. VAT)
chestertons.co.uk/property-to-rent/applicable-fees

Approximate gross internal area
52 sq m / 560 sq ft

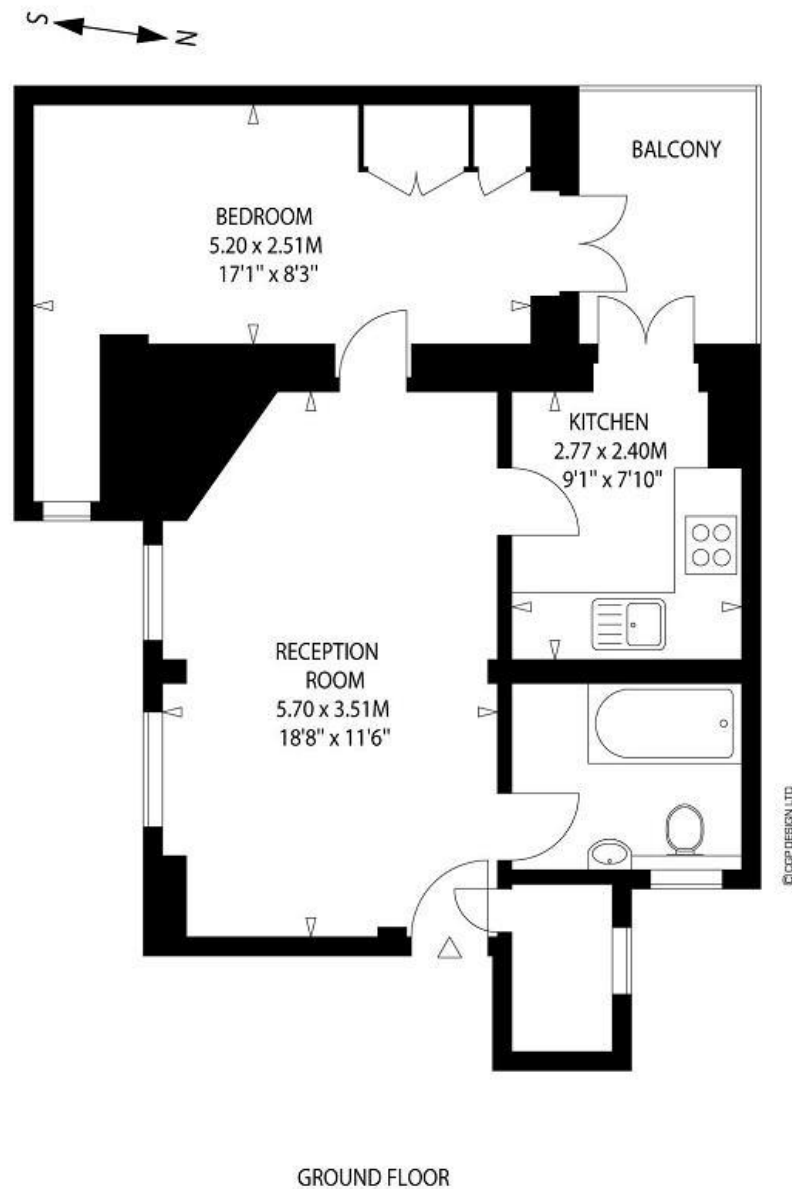


Illustration for identification purposes only, not to scale
All measurements are maximum, and includes wardrobes and window bays where applicable
CGP Design Tel 020 3177 1177