

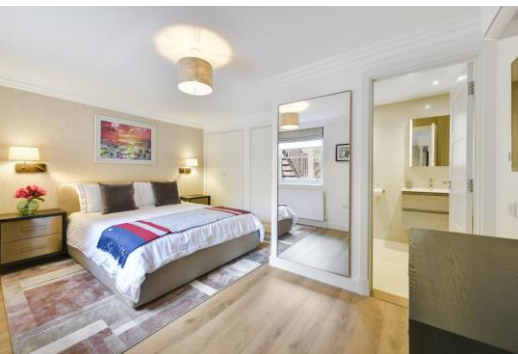


Beaufort Gardens

London, SW3

£12,545 per month
(£2,895 per week)

This beautifully presented duplex apartment of circa 1201 sq ft featuring 3.6m ceilings, concierge, direct lift access and air conditioning offers a rare opportunity to reside in one of London's most prestigious addresses.



Beaufort Gardens

London, SW3

- Newly refurbished
- Direct lift access
- High ceilings
- Four double bedrooms
- Concierge



Minimum Term: 12 months
Deposit Required: £17,370.00
Local Authority: Kensington and Chelsea
Council Tax Band: H
EPC Rating: C
Furnished

Chestertons Knightsbridge & Belgravia Lettings

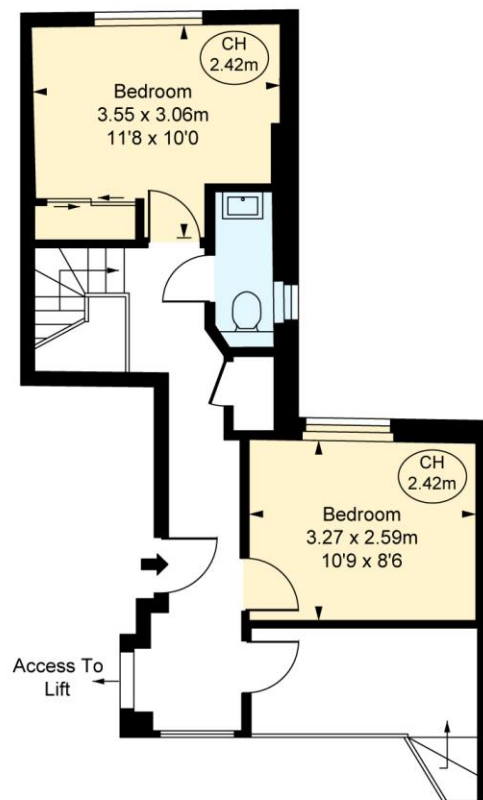
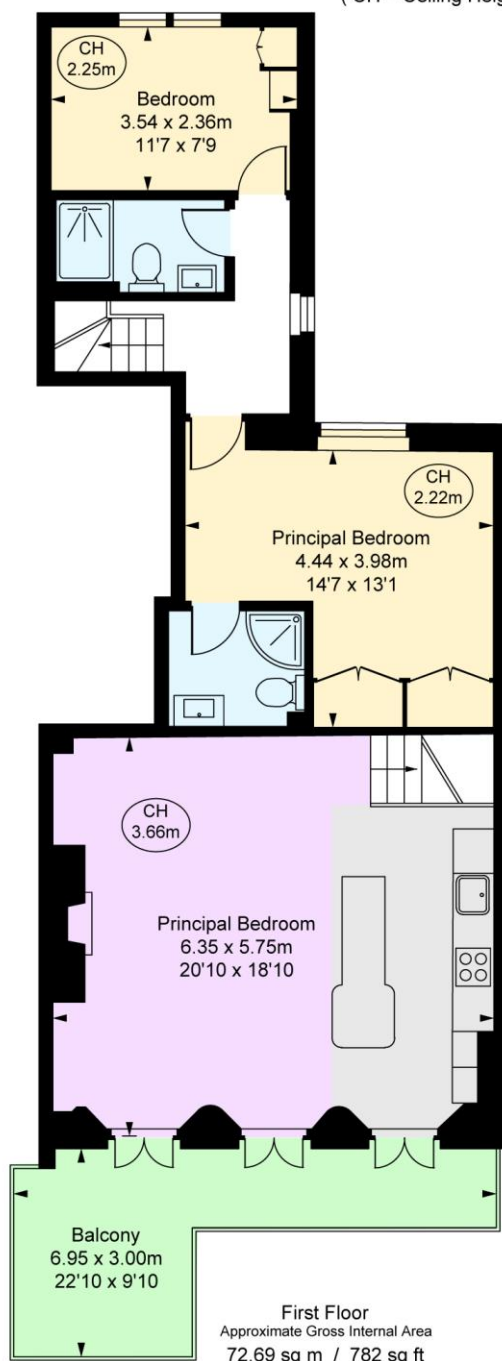
31 Lowndes Street
London
SW1X 9HX
knightsbridglettingsusers@chestertons.co.uk
02072353530
chestertons.co.uk

Additional tenant charges apply (fees apply to non-AST tenancies only)
Tenancy Agreement Fee: £300
References per Tenant/Guarantor: £60
Inventory check (approx. £100 – £250 inc. VAT)
[chestertons.co.uk/property-to-rent/applicable-fees](https://www.chestertons.co.uk/property-to-rent/applicable-fees)

Beaufort Gardens, SW3
Approximate Gross Internal Area
111.55 sq m / 1,201 sq ft



(CH = Ceiling Heights)



This plan is not to scale. It is for guidance and not for valuation purposes.
All measurements and areas are approximate only, and have been prepared in accordance with the current edition of the RICS Code of Measuring Practice.
© Fulham Performance

