



Lowndes Square

London, SW1X

£8,666.67 per month
(£2,000 per week)

Brand newly refurbished lateral apartment finished to exacting standards throughout. The property comprises part of portered building, located on an impressive garden square opposite Hyde Park.



Lowndes Square

London, SW1X

- Brand newly refurbished throughout
- Porter
- Wood flooring
- Built in storage
- Three bedrooms
- Opposite Hyde Park



Brand newly refurbished lateral apartment finished to exacting standards throughout. The property comprises part of portered building, located on an impressive garden square opposite Hyde Park.

The apartment is circa 1,153 sq ft, fitted with wood flooring throughout and modern appliances. The accommodation includes a large reception/dining room with high ceilings, separate modern kitchen, three double bedrooms and three bathrooms.

Lowndes Square is located opposite Hyde Park and Sloane Street, providing easy access to the world famous shops and restaurants of

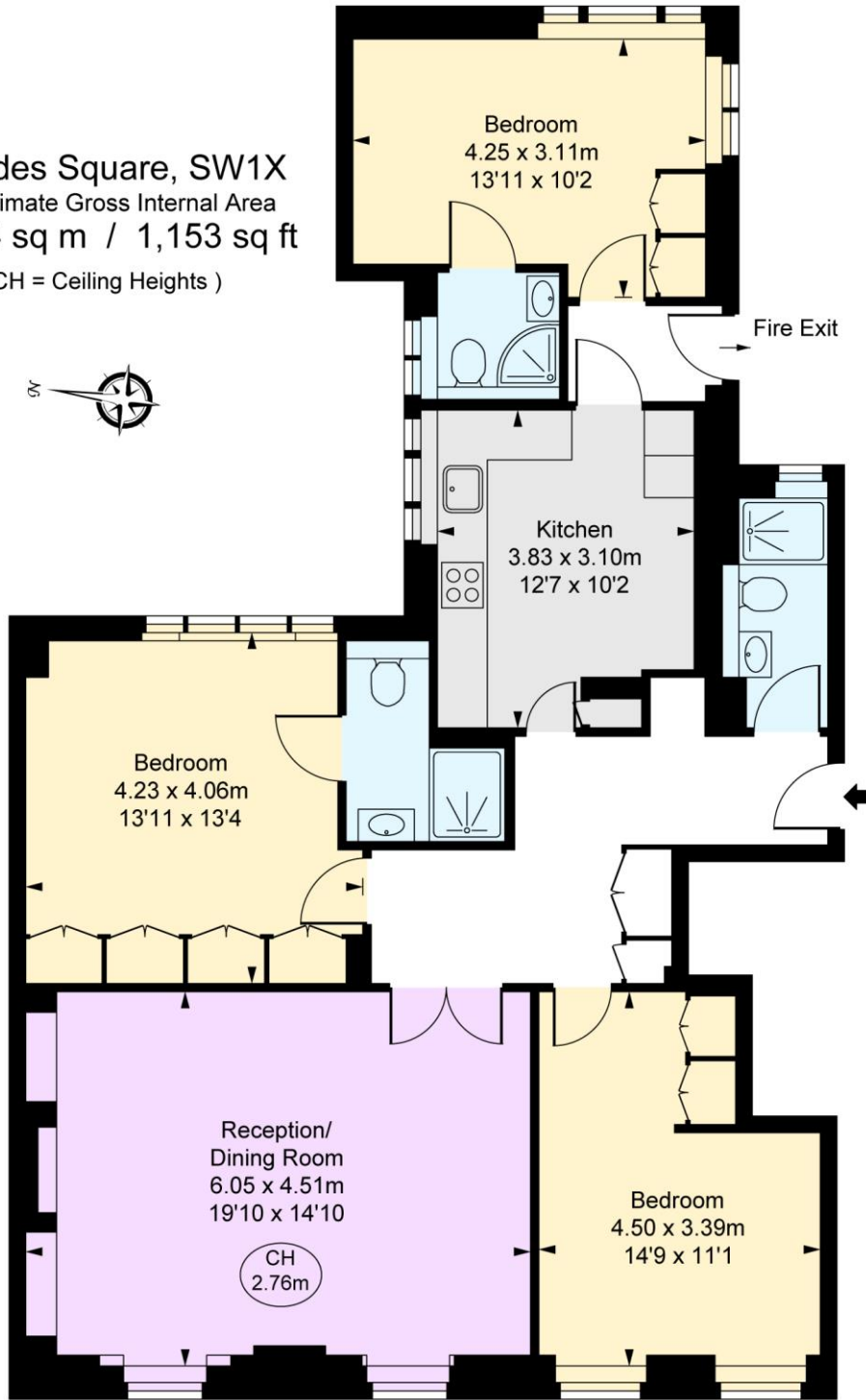
Minimum Term: 12 months
Deposit Required: £12,000.00
Local Authority: City of Westminster
Council Tax Band: H
EPC Rating: To be confirmed
Part Furnished

Chestertons Knightsbridge & Belgravia Lettings

31 Lowndes Street
London
SW1X 9HX
knightsbridglettingsusers@chestertons.co.uk
02072353530
chestertons.co.uk

Additional tenant charges apply (fees apply to non-AST tenancies only)
Tenancy Agreement Fee: £300
References per Tenant/Guarantor: £60
Inventory check (approx. £100 – £250 inc. VAT)
chestertons.co.uk/property-to-rent/applicable-fees

Lowndes Square, SW1X
 Approximate Gross Internal Area
 107.14 sq m / 1,153 sq ft
 (CH = Ceiling Heights)



Raised Ground Floor

This plan is not to scale. It is for guidance and not for valuation purposes.
 All measurements and areas are approximate only, and have been prepared in accordance with the current edition of the RICS Code of Measuring Practice.
 © Fulham Performance

Chesterton UK Services Limited trading as Chestertons for themselves and for the vendor of this property whose agents they are, give notice that (i) these particulars do not constitute any part of an offer or contract, (ii) all statements contained within these particulars are made without responsibility on the part of Chestertons or the vendor, (iii) whilst made in good faith, none of the statements contained within these particulars are to be relied upon as a statement or representation of fact, (iv) any intending purchasers must satisfy themselves by inspection or otherwise as to the correctness of each of the statements contained within these particulars, (v) the vendor does not make or give either Chestertons or any person in their employment any authority to make or give representation or warranty whatsoever in relation to this property. Wide angle lenses may be used. ©Copyright Chestertons | Chesterton Global Ltd | Registered Office 40 Connaught Street, Hyde Park, London W2 2AB Registered Company Number 05334580.

