

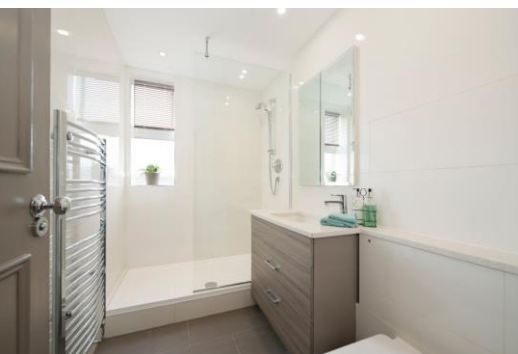


Greville House

Kinnerton Street, SW1X

£4,500 per month
(£1,038.46 per week)

Beautiful eighth floor apartment of circa 949 sq. ft., located in a popular portered building with lift access. The accommodation offers a bright reception/dining room with a separate kitchen, two bedrooms and two bathrooms.



Greville House

Kinnerton Street, SW1X

- Porter
- Lift
- Ample built in storage
- Large windows
- Fully furnished

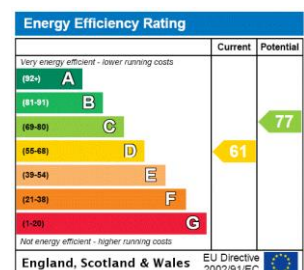


Beautiful eighth floor apartment of circa 949 sq. ft., located in a popular portered building with lift access. The accommodation offers a bright reception/dining room with a separate kitchen, two bedrooms and two bathrooms.

The accommodation offers a separate kitchen, a large reception/dining room, master bedroom with en suite bathroom, second double and bathroom. Both bedrooms fitted with built-in wardrobes.

The property is located in the popular Motcomb Village area of Belgravia, within close walking distance of Hyde Park and the world renowned shops of Sloane Street and Brompton road.

Minimum Term: 12 months
Deposit Required: Six weeks
Local Authority: City of Westminster
Council Tax Band: H
EPC Rating: D
Furnished



Chestertons Knightsbridge & Belgravia Lettings

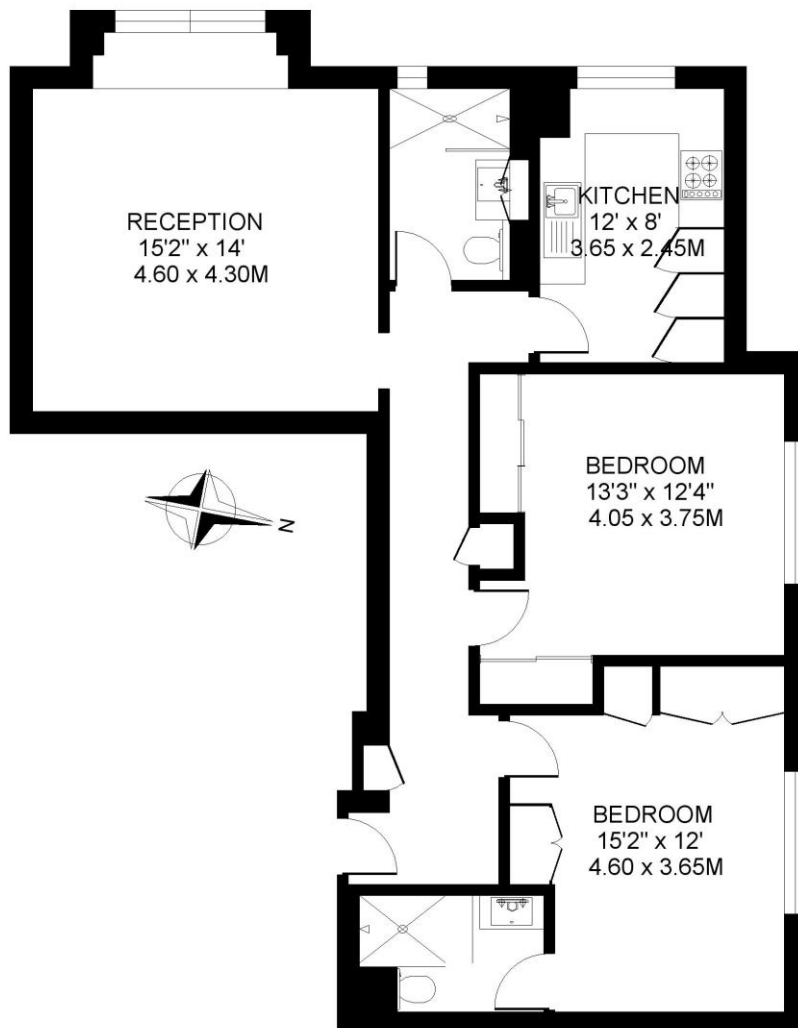
31 Lowndes Street
 London
 SW1X 9HX
knightsbridgelettingsusers@chestertons.co.uk
 02072353530
chestertons.co.uk

Additional tenant charges apply (fees apply to non-AST tenancies only)
 Tenancy Agreement Fee: £300
 References per Tenant/Guarantor: £60
 Inventory check (approx. £100 – £250 inc. VAT)
chestertons.co.uk/property-to-rent/applicable-fees

GREVILLE HOUSE, BELGRAVIA, LONDON SW1

APPROXIMATE INTERNAL (LIVING) FLOOR AREA

895 SQ.FT. / 83.1 SQ.M.



8TH FLOOR

COPYRIGHT
FLOORPLAN PRODUCED FOR HENRY & JAMES
BY FLOORPLANNERS 07801 228850

COPYRIGHT: Floorplan produced for "Henry & James" by floorplanners.co.uk

This plan is not to a given scale, and is for guidance only, and must not be relied upon as a statement of fact.

All measurements are maximum, and include window bays, and wardrobes where applicable.

This plan has been prepared in accordance with the "RICS" Code of Measuring Practice.

Where a room has a sloping ceiling, the dotted line indicates height at 1.5m. and measurements are shown at floor level.

