



Oakley House

Sloane Street, SW1X

£6,500 per month
(£1,500 per week)

SHORT LET | Bright and spacious recently refurbished 4th floor apartment with lift access and porter. Hot water and heating included.



Oakley House

Sloane Street, SW1X

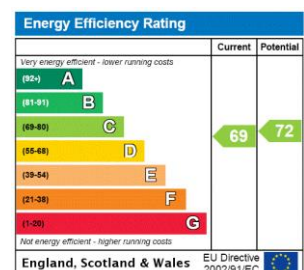
- Short Let
- Porter
- Lift access
- Hot water and heating included in rental
- Two double bedrooms
- Sloane Street location



A bright and spacious recently refurbished 4th floor apartment with lift access and porter. The property overlooks the beautiful Cadogan Place gardens, access to the gardens is available by separate application.

The accommodation is circa 667 sq. ft. and comprises of two double bedrooms, bright reception/dining room, separate fully fitted kitchen and modern bathroom. Hot water and heating included in rental.

Minimum Term: 1 month
Deposit Required: £9,000.00
Local Authority: Kensington and Chelsea
Council Tax Band: G
EPC Rating: C
Furnished



Chestertons Knightsbridge & Belgravia Lettings

31 Lowndes Street
 London
 SW1X 9HX
knightsbridgelettingsusers@chestertons.co.uk
 02072353530
chestertons.co.uk

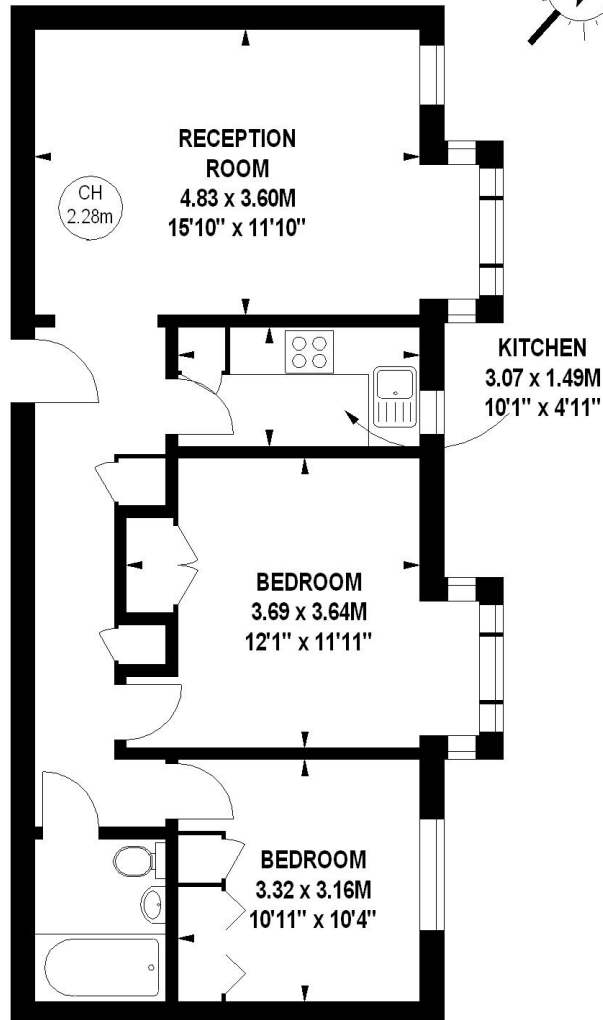
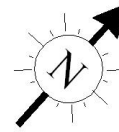
Additional tenant charges apply (fees apply to non-AST tenancies only)
 Tenancy Agreement Fee: £300
 References per Tenant/Guarantor: £60
 Inventory check (approx. £100 – £250 inc. VAT)
chestertons.co.uk/property-to-rent/applicable-fees

Oakley House, SW1X

Approximate gross internal area

61.96 sq m / 667 sq ft

Key :
CH - Ceiling Height



Fourth Floor

The floor plan is not to scale and measurements and areas shown are approximate and therefore should be used for illustrative purposes only. The plan has been prepared in accordance with the RICS code of Measuring Practice and whilst we have confidence in the information produced, it must not be relied on.

If there is any aspect of particular importance, you should carry out or commission your own inspection of the property.

Copyright of FeaturePRO.

