



Ebury Street

London, SW1W

£2,578.33 per month
(£595 per week)

A well-presented contemporary apartment on the 4th floor (with lift) of this portered building. The property benefits from plenty of natural light, wood flooring, separate modern kitchen, and built-in storage in the reception.

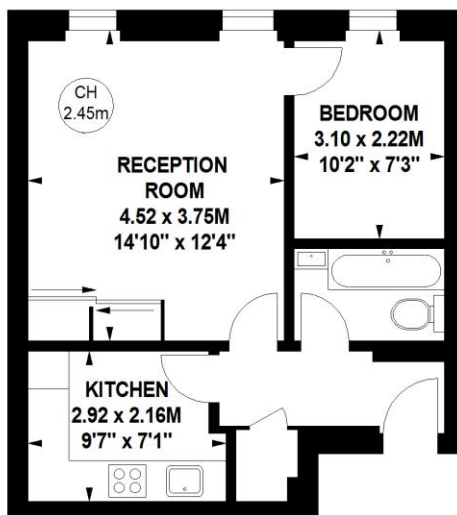
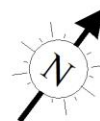
CHESTERTONS

Belgravia Court, SW1W

Approximate gross internal area

39.30 sq m / 423 sq ft

Key :
CH - Ceiling Height



Fourth Floor

The floor plan is not to scale and measurements and areas shown are approximate and therefore should be used for illustrative purposes only. The plan has been prepared in accordance with the RICS code of Measuring Practice and whilst we have confidence in the information produced, it must not be relied on. If there is any aspect of particular importance, you should carry out or commission your own inspection of the property.
Copyright of FeaturePRO.

Minimum Term: 12 months
Deposit Required: £2,975.00
Local Authority: City of Westminster
Council Tax Band: D
EPC Rating: E
Furnished

Energy Efficiency Rating		
	Current	Potential
Very energy efficient - lower running costs		
(92+) A		
(81-91) B		
(69-80) C		
(55-68) D		
(39-54) E	53	62
(21-38) F		
(1-20) G		
Not energy efficient - higher running costs		
England, Scotland & Wales		
EU Directive 2002/91/EC		

Chestertons Knightsbridge & Belgravia Lettings

31 Lowndes Street
London
SW1X 9HX
knightsbridgelettingsusers@chestertons.co.uk
02072353530
chestertons.co.uk

Additional tenant charges apply (fees apply to non-AST tenancies only)

Tenancy Agreement Fee: £300

References per Tenant/Guarantor: £60

Inventory check (approx. £100 – £250 inc. VAT)

chestertons.co.uk/property-to-rent/applicable-fees

Chesterton UK Services Limited trading as Chestertons for themselves and for the vendor of this property whose agents they are, give notice that (i) these particulars do not constitute any part of an offer or contract, (ii) all statements contained within these particulars are made without responsibility on the part of Chestertons or the vendor, (iii) whilst made in good faith, none of the statements contained within these particulars are to be relied upon as a statement or representation of fact, (iv) any intending purchasers must satisfy themselves by inspection or otherwise as to the correctness of each of the statements contained within these particulars, (v) the vendor does not make or give either Chestertons or any person in their employment any authority to make or give representation or warranty whatsoever in relation to this property. Wide angle lenses may be used. ©Copyright Chestertons | Chesterton Global Ltd | Registered Office 40 Connaught Street, Hyde Park, London W2 2AB Registered Company Number 05334580.



This paper is
100% recyclable